



ELSEVIER

# Structural synaptic plasticity across sleep and wake

Michele Bellesi and Luisa de Vivo

Sleep-dependent synaptic plasticity is crucial for optimal cognition. However, establishing the direction of synaptic plasticity during sleep has been particularly challenging since data in support of both synaptic potentiation and depotentiation have been reported. This review focuses on structural synaptic plasticity across sleep and wake and summarizes recent developments in the use of 3-dimensional electron microscopy as applied to this field.

## Address

School of Physiology, Pharmacology and Neuroscience, University of Bristol, Biomedical Sciences Building, University Walk, BS8 1TD Bristol, UK

Corresponding author: de Vivo, Luisa ([luisa.devivo@bristol.ac.uk](mailto:luisa.devivo@bristol.ac.uk))

**Current Opinion in Physiology** 2020, **15**:74–81

This review comes from a themed issue on **Physiology of sleep**

Edited by **Vladislav Vyazovskiy** and **Jenny Morton**

For a complete overview see the [Issue](#) and the [Editorial](#)

Available online 23rd December 2019

<https://doi.org/10.1016/j.cophys.2019.12.007>

2468-8673/© 2020 The Authors. Published by Elsevier Ltd. This is an open access article under the CC BY license (<http://creativecommons.org/licenses/by/4.0/>).

## Introduction

Why animals sleep is one of the most interesting questions in biology, and despite the significant progresses made in identifying the brain circuits that regulate sleep in different species, the ultimate answer to why sleep has evolved remains elusive. Sleep is particularly important for the brain where it ensures optimal biological functioning by serving restorative and detoxification purposes [1,2] and, enhances cognitive and complex motor tasks [3–7]. Sleep's beneficial role for cognition is likely to be carried out by synaptic plasticity, although other processes promoted by sleep (e.g. waste clearance, restoration of energy or cellular components) may also play a role. Synaptic potentiation and/or depotentiation (i.e. synaptic plasticity) are the primary mechanisms of skill learning and improving behavioural performance. However, the direction of synaptic plasticity during sleep is a controversial topic since evidence supporting both synaptic potentiation and depotentiation have been gathered by different groups, at the molecular and electrophysiological levels (reviewed in Refs. [8–10]).

Structural synaptic plasticity across sleep and wake was initially studied in fruit flies by measuring protein levels,

density and size of synaptic structures using confocal microscopy [11–13]. These studies showed that sleep was associated with decreased density or volume of fluorescent pre-synaptic and post-synaptic markers (e.g. Bruchpilot, disk-large, synaptobrevin) and with lower dendrite length and branching relative to waking and sleep deprivation [13]. Subsequently, other studies used *in vivo* two-photon imaging to follow the dynamics of pre-synaptic and post-synaptic structures across sleep and wake in zebrafish larvae and in mice, confirming the presence of circadian and sleep/wake-dependent structural plasticity in vertebrates too [14–16]. It was found that, in the somatosensory cortex of adolescent mice, fluorescently labelled dendritic spines undergo a constant turnover and that wake is associated with a small (~2%) but significant net increase of dendritic spine number, whereas sleep leads to a net spine loss. However, spine density was found to remain constant in the cortex of adult mice [15].

Since then, the study of sleep-dependent structural plasticity has gained much attention and multiple research groups measured spine density and turnover across sleep, wake and sleep deprivation in the hippocampus [17–19], dentate gyrus [20,21], prefrontal cortex [18,22], somatosensory and motor cortex [23,24,25\*\*] finding sometimes completely opposite results. On one hand, studies that used Golgi impregnation to stain dorsal hippocampal neurons reported that 5 hours of acute sleep deprivation by gentle handling could lead to reduced spine density and size in CA1 and in the inferior blade of the dentate gyrus relative to sleep [18,19,26]. On the other hand, using fluorescent molecules to label CA1 hippocampal neurons resulted in more numerous and bigger spines after sleep deprivation relative to sleep [17,27]. Since a similar regimen of sleep deprivation was applied, the opposite findings might be explained by the fact that the Golgi method stains unpredictably only some neurons and not others, applying an unknown bias in the population of spines sampled. Hence, it is possible for the decrease in spine density after sleep deprivation to be specific for the population of neurons labelled by the Golgi staining, and therefore to be lost when other methods to visualize dendritic spines are applied. However, another study reported that 24-hour sleep deprivation led to increased spine density in the prefrontal cortex of 22-month old rats but not in 3-month old rats, and to reduced spine density in the CA1 of 3-month old rats, but not of 22-month old rats [18]. Thus, sleep-dependent synaptic plasticity can be differentially modulated by the animal's age, the brain region considered, and the kind of sleep deprivation applied.

Time-lapse two-photon microscopy of fluorescent dendritic segments and spines have also been used to study the effect of acute sleep deprivation on spine turnover and stabilization in the mouse motor cortex during development (at postnatal day 21) and after motor skill learning [23,24]. These studies, even if they did not provide measures of total spine density across sleep and wake, suggested that sleep after training can at the same time promote pruning of some spines and be permissive of the formation or potentiation of other spines. Indeed, another study that used *in vivo* electroporation to transfect layer V pyramidal neurons of primary motor cortex with dsRed2, a structural marker, and SuperEcliptic pHluorin-tagged GluA1 (SEP-GluA1), which specifically visualizes surface inserted GluA1 AMPA receptor subunits, found that some dendritic spines became bigger and expressed more GluA1 after sleep relative to wake. However, the spines that became bigger and acquired more GluA1 subunits were only a minority since, in general, sleep was associated with an overall decrease of spine size (reduced dsRed intensity) and with synaptic depotentiation (reduced SEP-GluA1 intensity) [25\*\*].

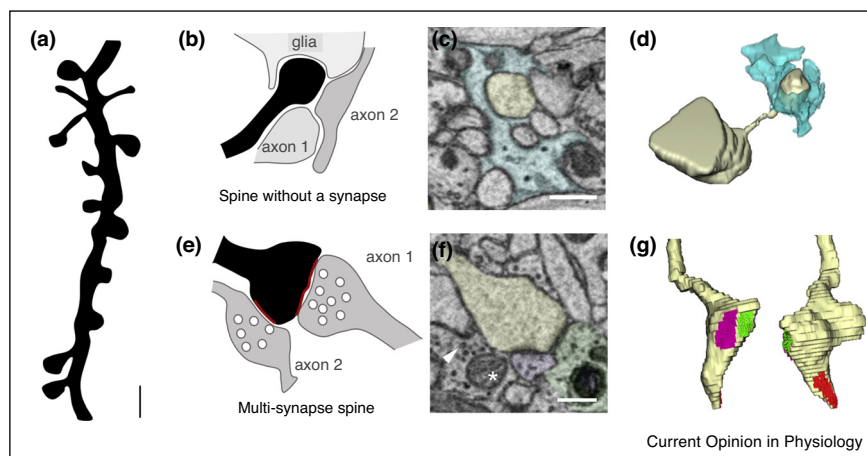
### Morphological markers of synaptic plasticity: beyond spine density

Dendritic spines are commonly considered to be surrogate of excitatory synapses because most of them carry a single excitatory synapse [28]. Because of a poor spatial resolution especially on the z axis, quantification of spine density by using light microscopy can underestimate the presence of small spines with very thin (40–200 nm) and

long (>1  $\mu\text{m}$ ) necks or of those that lie orthogonal to the plane of imaging. Further bias in the measure of synaptic plasticity are given by the fact that electrode implantation, skull craniotomies and thinning performed to allow EEG recordings or longitudinal *in vivo* two-photon imaging are major surgeries that can trigger inflammatory responses and glia activation and lead to subtle changes in spine turnover and fluorescent signal to noise ratio over time [29]. Moreover, relying on dendritic spines as a measure of synapse number, does not account for the existence of spines carrying multiple synapses [30–34] nor for spines without synaptic specializations or a functional pre-synaptic partner (e.g. spines contacting a vesicle-free pre-synaptic element) [35–38], whose function and abundance in different brain regions, ages and after specific wake-dependent experiences are not known (Figure 1).

Moreover, combined electrophysiological and morphological studies demonstrated that circuit rewiring and synaptic plasticity are not necessarily associated with formation or elimination of dendritic spines. For instance, while in young rat hippocampus, long-term potentiation (LTP) produces new dendritic spines [39], in the adult, new spine outgrowth is stalled in favour of synapse enlargement [35,40]. Synaptic strength (i.e. the magnitude of the post-synaptic response) is determined by the neurotransmitter release probability and by the conductance and number of excitatory post-synaptic receptors. Synaptic strength tightly correlates with synaptic morphological features, which can then be used to predict the amplitude of the post-synaptic response (Figure 2). Spine

Figure 1

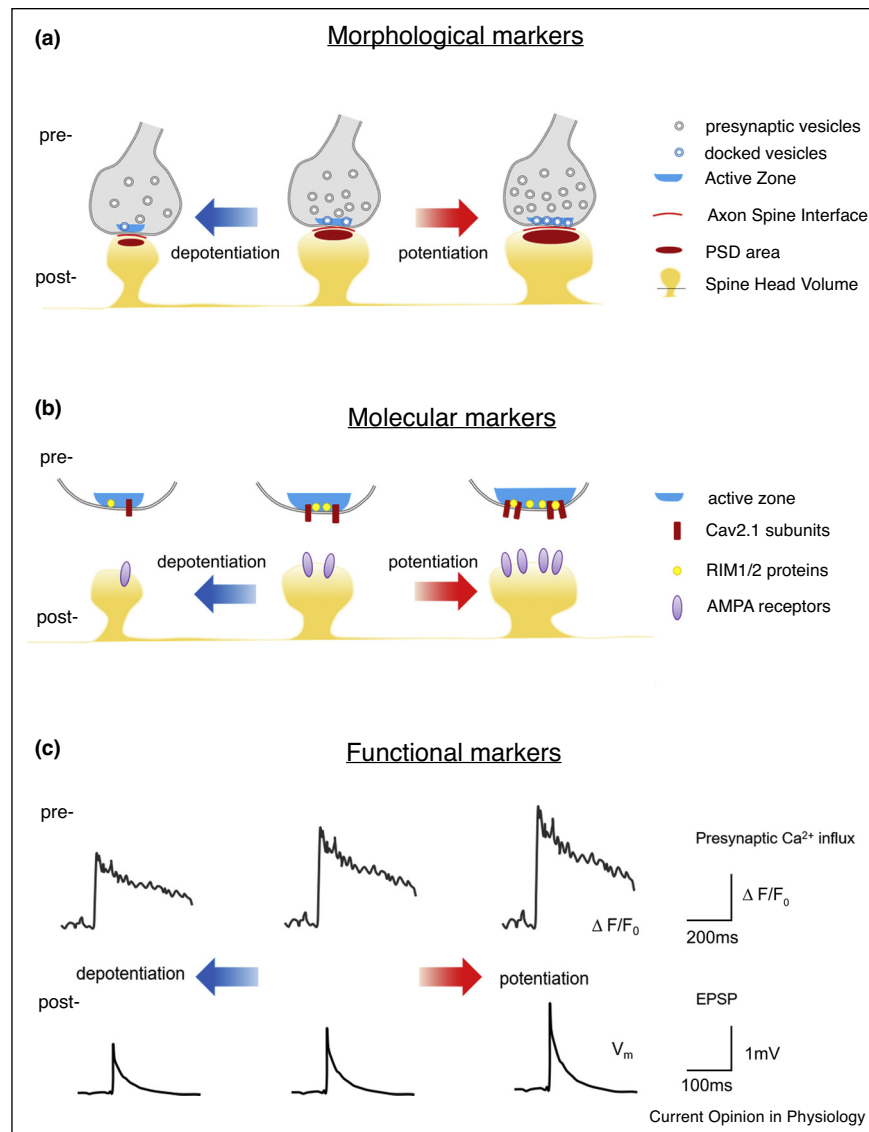


Not all spines carry one synapse. **(a)** Schematic illustration of a dendritic segment with spines of different shape and size as visualized in 2 dimensions at the light microscopy resolution. Scale bar 1  $\mu\text{m}$ . **(b)** Schematic illustration of a dendritic spine (in black) lacking a synapse because surrounded by glial processes and axons (grey) without pre-synaptic vesicles. **(c)** An electron micrograph showing a dendritic spine head (in yellow) lacking a synapse and surrounded by an astrocytic process (light blue) and other structures such axons and dendrites in the mouse somatosensory cortex. Scale bar 350 nm. **(d)** 3d reconstruction of the spine shown in (f) and astrocyte showed in (c). **(e)** Schematic illustration of a dendritic spine (black) making 2 synaptic contacts with different pre-synaptic terminals (grey); **(f)** electron micrograph of a multi-synapse spine (yellow) and two out of three contacting pre-synaptic terminals (light green and purple) in the mouse somatosensory cortex. Asterisk indicates a mitochondrion; arrowhead indicates a pre-synaptic vesicle. Scale bar 300 nm. **(g)** 3d reconstruction of the spine and its 3 synaptic contacts in magenta, green, and red, front and back view.

head volume and post-synaptic density (PSD) area are considered the best morphological markers of synaptic strength because they are positively and linearly correlated with each other [41] and with the amplitude of the post-synaptic currents AMPA-receptor mediated [42].

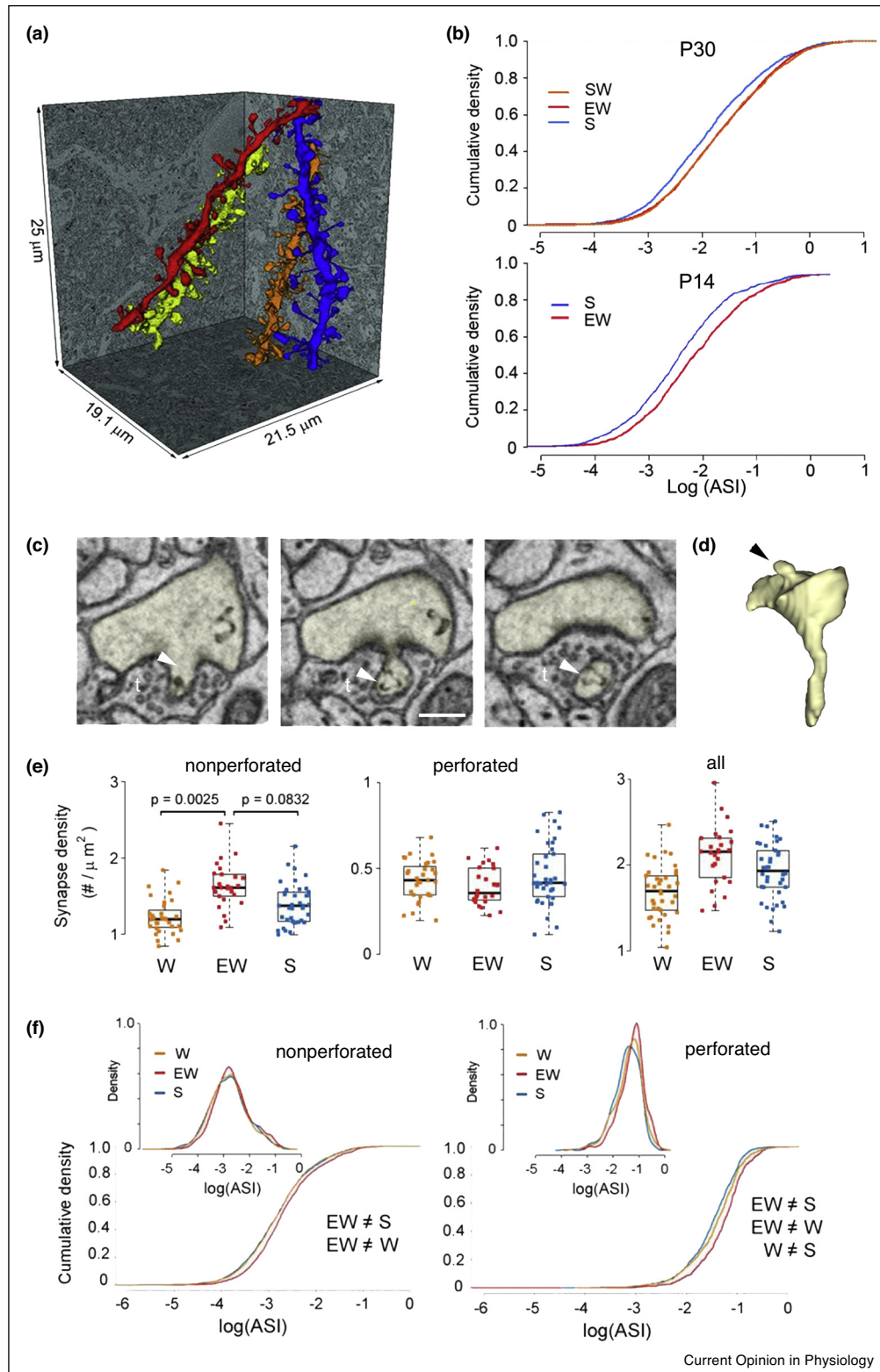
Spine head volume and PSD enlarge after synaptic long-term potentiation and shrink after depotentiation [43]. Spine head volume and PSD area are also positively correlated with the area of contact between the axon and the spine (axon-spine interface or ASI) [44], the

Figure 2



Markers of synaptic strength. Synaptic strength varies as a result of synaptic plasticity which is associated with bidirectional changes of morphological, molecular and functional parameters, at the pre-synaptic and post-synaptic levels. **(a)** Potentiation is associated with an increase in the number of pre-synaptic vesicles, docked vesicles, and Active Zone area at the pre-synaptic level. Post-synaptically, potentiation is accompanied by enlargement of spine head volume, PSD and Axon Spine Interface. The opposite occurs with depotentiation. **(b)** The Active Zone area, the number of pre-synaptic voltage-dependent calcium channels and RIM proteins, and the number of post-synaptic AMPA receptors increase or decrease with potentiation and depotentiation, respectively. **(c)** Synaptic potentiation can lead to increased pre-synaptic Calcium influx and/or to larger variations of the postsynaptic membrane potential. Pre-synaptically, the total number of pre-synaptic vesicles and the number of docked vesicles correlate with the Active zone area, which directly correlate with the number of pre-synaptic voltage-dependent calcium channels and RIM proteins that control pre-synaptic Calcium influx and neurotransmitter probability release at a specific active zones [56]. Post-synaptically, ASI area, PSD area and spine head volume directly and strongly correlate with the number of AMPA receptors and with the amplitude of the excitatory post-synaptic potential. Pre and post-synaptic morphological markers of synaptic strength also linearly and positively correlate [42–45]. Abbreviations: PSD, post-synaptic density, Cav2.1, voltage-dependent Calcium channel P/Q type; RIM1/2, Rab interacting molecule; AMPA,  $\alpha$ -amino-3-hydroxy-5-methyl-4-isoxazolepropionic acid; EPSP, excitatory post-synaptic potential.;  $\Delta F/F_0$ , fold change in fluorescent signal relative to baseline.

Figure 3



Ultrastructural synaptic plasticity across sleep and wake. **(a)** Reconstruction of four spiny dendritic segments sampled in primary somatosensory cortex from a volume of tissue imaged with serial block-face electron microscopy (SBF-SEM). **(b)** Top, ASI size in P30 mouse primary motor and somatosensory cortex declines in sleep by 18% according to a scaling relationship. Bottom, in P14 pups, ASI size in motor cortex scales down in sleep by 30%. **(c)** Three consecutive electron micrographs showing an example of a spine head (yellow) with a *spinula* (arrowhead) protruding into the

number of pre-synaptic vesicles [41], docked vesicles [45], and post-synaptic glutamate receptors [46] (Figure 2). Computational models showed that the spine surface to volume ratio has an important effect on spatial and temporal calcium dynamics within the spine and hence on synaptic function [35,47]. Spine surface to volume ratio is dependent on both spine size and shape, as well as on the presence and size of organelles within the spine such as the spine apparatus and the smooth-endoplasmic reticulum (SER). Therefore, in addition to spine density, actual synapse density and strength must be considered to determine the nature of sleep-dependent synaptic plasticity.

### Recent ultrastructural data on sleep-dependent synaptic downscaling

The development of 3-dimensional electron microscopy techniques has allowed the reconstruction in 3 dimensions of cortical and hippocampal excitatory synapses across sleep and wake. In a first study, 30-day old (P30) mice were sacrificed after spending most of the previous 6–8 hours asleep, spontaneously awake or forcedly awake and about 8400 dendritic spines were reconstructed from random dendrites in layer II of the primary motor and somatosensory cortices [48\*\*]. On average, 13% of all spines (range from 5% to up to 24%) were classified as ‘non-synaptic spines’ because they either lacked a clear post-synaptic density, a synaptic cleft or pre-synaptic vesicles in the structures surrounding the spine. Among the spines with a synapse, the ASIs shrank by 18% in the group of mice that spent most of the last 6–8 hours asleep compared to the mice that were awake, independently of time of day, suggesting that sleep promotes overall synaptic depotentiation (Figure 3a,b). Neither the abundance of ‘non-synaptic spines’ nor that one of those carrying a synapse changed significantly across the sleep-wake cycle. The sleep-dependent reduction in ASI area was not homogeneous: only small and medium size ASIs, that constituted about 80% of the population, downscaled after sleep, that is, shrank in a multiplicative manner. The population of biggest ASIs instead did not show downscaling. Moreover, ASIs that lacked non-SER recycling vesicles, tubules and multi-vesicular bodies in the spine head or neck (about 30–40% of all spines) were less likely to show sleep-dependent downscaling. Surprisingly, neither the presence of a spine apparatus (in about 30% of the spines) nor a pre-synaptic mitochondrion (found in about 32% of the terminals or boutons making synapse on the spines) influenced the likelihood of undergoing sleep-dependent downscaling.

Similarly, in the hippocampus, CA1 stratum radiatum, more than 7300 ASI were analysed after sleep, wake and enforced wake [49\*\*] (Figure 3c–f). Consistently with previous reports, in CA1 two populations of synapses were found: perforated and non-perforated [50,51]. ASI were classified as perforated (22% of spine sample) according to the presence of a perforated PSD, a spinula (i.e. a protrusion of the post-synaptic element into the pre-synapse), and/or a spine apparatus in the spine. Whilst non-perforated ASI did not change across sleep and spontaneous wake, their density and size increased after enforced wake (Figure 3e,f). Perforated ASIs instead showed downscaling after sleep and upscaling after enforced wake relative to spontaneous wake, but without changing their density.

Finally, a recent study mapped the effect of sleep earlier in the development [52\*]. Fourteen-day old (P14) mouse pups were either let sleep *ad libitum* for 4.5–6 hours or kept awake as much as possible with novel objects and gentle handling for the same time interval before brain collection. At this age, on average, spine density in primary motor cortex was similar to that measured in P30 mice but ASIs were smaller than at P30 (ASI in  $\mu\text{m}^2$ , mean  $\pm$  SD: P14, Sleep =  $0.127 \pm 0.141$ ; P14 Enforced Wake =  $0.168 \pm 0.177$ ; P30 sleep =  $0.256 \pm 0.289$ ; P30 Enforced wake =  $0.294 \pm 0.324$ ) and there were more non-synaptic spines ( $\sim 27\%$  at P14 versus  $\sim 13\%$  at P30, no change between sleep and wake). As in P30 mice, in P14 pups, synaptic density did not change significantly across sleep and wake in motor cortex, and ASIs were smaller after sleep relative to enforced wake (Figure 3b). However, after sleep, the ASI population was homogeneously downscaled by  $\sim 30\%$ , independently of ASI size and of the presence of specific organelles in the spine or in the pre-synaptic element.

### Conclusions

Detailed analysis of ultrastructural synaptic parameters is necessary to appreciate changes in synaptic strength that do not manifest necessarily as addition or elimination of new spines. 3d electron microscopy has been used to show that in the cerebral cortex of P30 mice, small and medium synapses underwent downscaling during sleep, whereas the largest synapses were protected. Since there is evidence that synapse size is positively correlated to synapse strength, by downscaling preferentially small and medium synapses and sparing the large ones, sleep would contribute to enhance the cortex signal to noise ratio and consolidate the synapses most potentiated during wake [9]. Experiments of longitudinal two-photon

(Figure 3 Legend Continued) pre-synaptic terminal (t), sampled from hippocampal CA1 stratum radiatum, scale bar = 300 nm. (d) 3d reconstruction of the spine and spinula (arrowhead) showed in (c). (e) Hippocampal synapse density (N of synapses per dendrite surface area) in each experimental group, shown for nonperforated, perforated, and all synapses. Each dot is one dendrite. (f) Distribution and cumulative plots of ASI sizes in each group, on a log scale, shown for hippocampal nonperforated and perforated synapses. Abbreviations: W, spontaneous wake group; S, sleep group; EW, enforced wake group; ASI, axon spine interface. (a) and (b) modified from Ref. [48] and [52]. (e) and (f) modified from Ref. [49].

imaging suggest that spine size also correlates with spine stability [53<sup>\*</sup>], with large spines being more stable than thin ones and contributing the most to the stability of long-term memories [54]. Since at P14, cortical synapses are smaller than at P30 and are all equally downscaled during sleep, it is likely that, at this age, synapses are highly plastic and not yet fully committed to long-term memory. However, the ultrastructural studies presented here were limited to small brain regions, excitatory synapses impinging on pyramidal neurons and were all conducted in P30 and P14 mice, leaving unresolved the question whether the same effects are also observed in other types of synapses and at different ages. They also highlighted that sleep-dependent synaptic plasticity can be heterogeneous in the brain and do not rule out that potentiation can also occur during sleep at specific synapses. Moreover, these studies did not establish whether the ultrastructural synaptic changes observed after sleep are directly linked to synaptic plasticity and learning occurred during wake rather than to overall changes in neuromodulator and hormonal levels across different physiological states. Another unanswered question is to what extent synaptic downscaling is necessary or sufficient for the cognitive improvement promoted by sleep. To this aim, examining synapse ultrastructure after learning of a sleep-dependent task or blocking synapse downscaling and assessing the effect on performance could be useful experiments. Future experiments should also aim to capture synaptic plasticity during sleep at the global and single synapse level. In this regard, by using two photon *in vivo* microscopy combined with fluorescent tagging of synaptic components (such as SEP-GluA1) one could reveal how single synapses behave across multiple sleep/wake cycles, across different periods of development and in relation to learning during waking experience. Multiplex electron microscopy [55] could help exploring how the identity of the pre-synaptic and post-synaptic elements as well as local differences in neuromodulator connectivity influence synaptic ultrastructure and plasticity during sleep. Moreover, novel algorithms of automatic image segmentation will speed up synapse tracing and will allow to extend the morphological investigation to larger brain areas.

## Funding

This work was supported by the Wellcome trust to MB (215267/Z/19/Z, 2019) and LdV (217546/Z/19/Z, 2019).

## Conflict of interest statement

Nothing declared.

## References and recommended reading

Papers of particular interest, published within the period of review, have been highlighted as:

- of special interest
  - of outstanding interest
1. Xie L, Kang H, Xu Q, Chen MJ, Liao Y, Thiyagarajan M, O'Donnell J, Christensen DJ, Nicholson C, Iliff JJ *et al.*: **Sleep drives metabolite clearance from the adult brain.** *Science* 2013, **342**:373-377 <http://dx.doi.org/10.1126/science.1241224>.
  2. Benington JH, Craig Heller H: **Restoration of brain energy metabolism as the function of sleep.** *Prog Neurobiol* 1995, **45**:347-360 [http://dx.doi.org/10.1016/0301-0082\(94\)00057-O](http://dx.doi.org/10.1016/0301-0082(94)00057-O).
  3. Zinke K, Noack H, Born J: **Sleep augments training-induced improvement in working memory in children and adults.** *Neurobiol Learn Mem* 2018, **147**:46-53 <http://dx.doi.org/10.1016/j.nlm.2017.11.009>.
  4. Nagai H, de Vivo L, Bellesi M, Ghilardi MF, Tononi G, Cirelli C: **Sleep consolidates motor learning of complex movement sequences in mice.** *Sleep* 2017, **40** <http://dx.doi.org/10.1093/sleep/zsw059>.
  5. Krause AJ, Simon EB, Mander BA, Greer SM, Saletin JM, Goldstein-Piekarski AN, Walker MP: **The sleep-deprived human brain.** *Nat Rev Neurosci* 2017, **18**:404-418 <http://dx.doi.org/10.1038/nrn.2017.55>.
  6. Wagner U, Gais S, Haider H, Verleger R, Born J: **Sleep inspires insight.** *Nature* 2004, **427**:352-355 <http://dx.doi.org/10.1038/nature02223>.
  7. Walker MP, Brakefield T, Morgan A, Hobson JA, Stickgold R: **Practice with sleep makes perfect: sleep-dependent motor skill learning.** *Neuron* 2002, **35**:205-211 [http://dx.doi.org/10.1016/s0896-6273\(02\)00746-8](http://dx.doi.org/10.1016/s0896-6273(02)00746-8).
  8. Tononi G, Cirelli C: **Sleep and synaptic down-selection.** *Eur J Neurosci* 2019, **00**:1-9 <http://dx.doi.org/10.1111/ejn.14335>.
  9. Tononi G, Cirelli C: **Sleep and the price of plasticity: from synaptic and cellular homeostasis to memory consolidation and integration.** *Neuron* 2014, **81**:12-34 <http://dx.doi.org/10.1016/j.neuron.2013.12.025>.
  10. Raven F, Van der Zee EA, Meerlo P, Havekes R: **The role of sleep in regulating structural plasticity and synaptic strength: Implications for memory and cognitive function.** *Sleep Med Rev* 2018, **39**:3-11 <http://dx.doi.org/10.1016/j.smrv.2017.05.002>.
  11. Donlea JM, Ramanan N, Shaw PJ: **Use-dependent plasticity in clock neurons regulates sleep need in *Drosophila*.** *Science* 2009, **324**:105-108 <http://dx.doi.org/10.1126/science.1166657>.
  12. Gilestro GF, Tononi G, Cirelli C: **Widespread changes in synaptic markers as a function of sleep and wakefulness in *Drosophila*.** *Science* 2009, **324**:109-112 <http://dx.doi.org/10.1126/science.1166673>.
  13. Bushey D, Tononi G, Cirelli C: **Sleep and synaptic homeostasis: structural evidence in *Drosophila*.** *Science* 2011, **332**:1576-1581 <http://dx.doi.org/10.1126/science.1202839>.
  14. Appelbaum L, Wang G, Yokogawa T, Skariah GM, Smith SJ, Mourrain P, Mignot E: **Circadian and homeostatic regulation of structural synaptic plasticity in hypocretin neurons.** *Neuron* 2010, **68**:87-98 <http://dx.doi.org/10.1016/j.neuron.2010.09.006>.
  15. Maret S, Faraguna U, Nelson AB, Cirelli C, Tononi G: **Sleep and waking modulate spine turnover in the adolescent mouse cortex.** *Nat Neurosci* 2011, **14**:1418-1420 <http://dx.doi.org/10.1038/nn.2934>.
  16. Yang G, Gan W-B: **Sleep contributes to dendritic spine formation and elimination in the developing mouse somatosensory cortex.** *Dev Neurobiol* 2012, **72**:1391-1398 <http://dx.doi.org/10.1002/dneu.20996>.
  17. Gisabella B, Scammell T, Bandaru SS, Saper CB: **Regulation of hippocampal dendritic spines following sleep deprivation.** *J Comp Neurol* 2020, **528**:380-388 <http://dx.doi.org/10.1002/cne.24764>.
  18. Acosta-peña E, Camacho-Abrego I, Melgarejo-Gutiérrez M, Flores G, Drucker-Colín R, García-García F: **Sleep deprivation induces differential morphological changes in the hippocampus and prefrontal cortex in young and old rats.** *Synapse* 2015, **69**:15-25 <http://dx.doi.org/10.1002/syn.21779>.
  19. Havekes R, Park AJ, Tudor JC, Luczak VG, Hansen RT, Ferri SL, Bruinenberg VM, Poplawski SG, Day JP, Aton SJ *et al.*: **Sleep deprivation causes memory deficits by negatively impacting**

- neuronal connectivity in hippocampal area CA1. *eLife* 2016, **5** <http://dx.doi.org/10.7554/eLife.13424>.
20. Raven F, Meerlo P, Van der Zee EA, Abel T, Havekes R: **A brief period of sleep deprivation causes spine loss in the dentate gyrus of mice.** *Neurobiol Learn Mem* 2019, **160**:83-90 <http://dx.doi.org/10.1016/j.nlm.2018.03.018>.
  21. Tuan L-H, Lee L-J: **Microglia-mediated synaptic pruning is impaired in sleep-deprived adolescent mice.** *Neurobiol Dis* 2019, **130**:104517 <http://dx.doi.org/10.1016/j.nbd.2019.104517>.
  22. Perez-Cruz C, Simon M, Flügge G, Fuchs E, Czéh B: **Diurnal rhythm and stress regulate dendritic architecture and spine density of pyramidal neurons in the rat infralimbic cortex.** *Behav Brain Res* 2009, **205**:406-413 <http://dx.doi.org/10.1016/j.bbr.2009.07.021>.
  23. Yang G, Lai CSW, Cichon J, Ma L, Li W, Gan W-B: **Sleep promotes branch-specific formation of dendritic spines after learning.** *Science* 2014, **344**:1173-1178 <http://dx.doi.org/10.1126/science.1249098>.
  24. Li W, Ma L, Yang G, Gan W-B: **REM sleep selectively prunes and maintains new synapses in development and learning.** *Nat Neurosci* 2017, **20**:427-437 <http://dx.doi.org/10.1038/nn.4479>.
  25. Diering GH, Nirujogi RS, Roth RH, Worley PF, Pandey A, Hugarir RL: **Homer1a drives homeostatic scaling-down of excitatory synapses during sleep.** *Science* 2017, **355**:511-515 <http://dx.doi.org/10.1126/science.aai8355>
- Quantitative proteomics and western blotting are used to assess changes in the biochemical composition of forebrain post-synaptic densities across the sleep/wake cycle and to detect the molecular mechanisms underpinning sleep-dependent synaptic depotentiation. The authors show that Homer1a enters the post-synaptic density during sleep where it disrupts the mGluR1/5 - IP3R complex and promotes AMPAR removal. The authors also show with in vivo 2-photon microscopy that during sleep, while some spines gain new GluA1 subunits, most spines show a reduction both in GluA1 content and in size.
26. Wong L-W, Tann JY, Ibanez CF, Sajikumar S: **The p75 neurotrophin receptor is an essential mediator of impairments in hippocampal-dependent associative plasticity and memory induced by sleep deprivation.** *J Neurosci* 2019, **39**:5452-5465 <http://dx.doi.org/10.1523/JNEUROSCI.2876-18.2019>.
  27. Ikeda M, Hojo Y, Komatsuzaki Y, Okamoto M, Kato A, Takeda T, Kawato S: **Hippocampal spine changes across the sleep-wake cycle: corticosterone and kinases.** *J Endocrinol* 2015, **226**:M13-27 <http://dx.doi.org/10.1530/JOE-15-0078>.
  28. Harris KM, Jensen FE, Tsao B: **Three-dimensional structure of dendritic spines and synapses in rat hippocampus (CA1) at postnatal day 15 and adult ages: implications for the maturation of synaptic physiology and long-term potentiation.** *J Neurosci* 1992, **12**:2685-2705.
  29. Crowe SE, Ellis-Davies GCR: **Longitudinal in vivo two-photon fluorescence imaging.** *J Comp Neurol* 2014, **522**:1708-1727 <http://dx.doi.org/10.1002/cne.23502>.
  30. Yang Y, Liu D, Huang W, Deng J, Sun Y, Zuo Y, Poo M: **Selective synaptic remodeling of amygdalocortical connections associated with fear memory.** *Nat Neurosci* 2016, **19**:1348-1355 <http://dx.doi.org/10.1038/nn.4370>.
  31. Villa KL, Berry KP, Subramanian J, Cha JW, Chan Oh W, Kwon H-B, Kubota Y, So PTC, Nedivi E: **Inhibitory synapses are repeatedly assembled and removed at persistent sites in vivo.** *Neuron* 2016, **90**:662-664 <http://dx.doi.org/10.1016/j.neuron.2016.03.035>.
  32. Fiala JC, Feinberg M, Popov V, Harris KM: **Synaptogenesis via dendritic filopodia in developing hippocampal area CA1.** *J Neurosci* 1998, **18**:8900-8911 <http://dx.doi.org/10.1523/JNEUROSCI.18-21-08900.1998>.
  33. Santuy A, Rodríguez JR, DeFelipe J, Merchán-Pérez A: **Volume electron microscopy of the distribution of synapses in the neuropil of the juvenile rat somatosensory cortex.** *Brain Struct Funct* 2018, **223**:77-90 <http://dx.doi.org/10.1007/s00429-017-1470-7>.
  34. Nikonenko I, Boda B, Steen S, Knott G, Welker E, Müller D: **PSD-95 promotes synaptogenesis and multiinnervated spine formation through nitric oxide signaling.** *J Cell Biol* 2008, **183**:1115-1127 <http://dx.doi.org/10.1083/jcb.200805132>.
  35. Bell ME, Bourne JN, Chirillo MA, Mendenhall JM, Kuwajima M, Harris KM: **Dynamics of nascent and active zone ultrastructure as synapses enlarge during long-term potentiation in mature hippocampus.** *J Comp Neurol* 2014, **522**:3861-3884 <http://dx.doi.org/10.1002/cne.23646>.
  36. Berry KP, Nedivi E: **Spine dynamics: are they all the same?** *Neuron* 2017, **96**:43-55 <http://dx.doi.org/10.1016/j.neuron.2017.08.008>.
  37. Arellano JI, Espinosa A, Fairén A, Yuste R, DeFelipe J: **Non-synaptic dendritic spines in neocortex.** *Neuroscience* 2007, **145**:464-469 <http://dx.doi.org/10.1016/j.neuroscience.2006.12.015>.
  38. Knott GW, Holtmaat A, Wilbrecht L, Welker E, Svoboda K: **Spine growth precedes synapse formation in the adult neocortex in vivo.** *Nat Neurosci* 2006, **9**:1117-1124 <http://dx.doi.org/10.1038/nn1747>.
  39. Watson DJ, Ostroff L, Cao G, Parker PH, Smith H, Harris KM: **LTP enhances synaptogenesis in the developing hippocampus.** *Hippocampus* 2016, **26**:560-576 <http://dx.doi.org/10.1002/hipo.22536>.
  40. Bourne JN, Harris KM: **Coordination of size and number of excitatory and inhibitory synapses results in a balanced structural plasticity along mature hippocampal CA1 dendrites during LTP.** *Hippocampus* 2011, **21**:354-373 <http://dx.doi.org/10.1002/hipo.20768>.
  41. Harris KM, Stevens JK: **Dendritic spines of CA 1 pyramidal cells in the rat hippocampus: serial electron microscopy with reference to their biophysical characteristics.** *J Neurosci* 1989, **9**:2982-2997.
  42. Matsuzaki M, Honkura N, Ellis-Davies GCR, Kasai H: **Structural basis of long-term potentiation in single dendritic spines.** *Nature* 2004, **429**:761-766 <http://dx.doi.org/10.1038/nature02617>.
  43. Okamoto K-I, Nagai T, Miyawaki A, Hayashi Y: **Rapid and persistent modulation of actin dynamics regulates postsynaptic reorganization underlying bidirectional plasticity.** *Nat Neurosci* 2004, **7**:1104-1112 <http://dx.doi.org/10.1038/nn1311>.
  44. Cheetham CEJ, Barnes SJ, Albieri G, Knott GW, Finnerty GT: **Pansynaptic enlargement at adult cortical connections strengthened by experience.** *Cereb Cortex* 2014, **24**:521-531 <http://dx.doi.org/10.1093/cercor/bhs334>.
  45. Schikorski T, Stevens CF: **Quantitative fine-structural analysis of olfactory cortical synapses.** *Proc Natl Acad Sci U S A* 1999, **96**:4107-4112.
  46. Nusser Z, Lujan R, Laube G, Roberts JDB, Molnar E, Somogyi P: **Cell type and pathway dependence of synaptic AMPA receptor number and variability in the hippocampus.** *Neuron* 1998, **21**:545-559 [http://dx.doi.org/10.1016/S0896-6273\(00\)80565-6](http://dx.doi.org/10.1016/S0896-6273(00)80565-6).
  47. Cugno A, Bartol TM, Sejnowski TJ, Iyengar R, Rangamani P: **Geometric principles of second messenger dynamics in dendritic spines.** *Sci Rep* 2019, **9**:11676 <http://dx.doi.org/10.1038/s41598-019-48028-0>.
  48. de Vivo L, Bellesi M, Marshall W, Bushong EA, Ellisman MH, Tononi G, Cirelli C: **Ultrastructural evidence for synaptic scaling across the wake/sleep cycle.** *Science* 2017, **355**:507-510 <http://dx.doi.org/10.1126/science.aah5982>
- This is the first study that used volume electron microscopy to study sleep dependent synaptic remodelling in primary somatosensory and motor cortex. The authors show that after sleep excitatory synapses downscale and the axon-spine interface shrinks by 18% relative to both spontaneous and enforced wake. Large size of the axon-spine interface and the presence of recycling endosomes in the spine are the main predictor of downscaling during sleep.
49. Spano GM, Banningsh SW, Marshall W, de Vivo L, Bellesi M, Loschky SS, Tononi G, Cirelli C: **Sleep deprivation by exposure to novel objects increases synapse density and axon-spine interface in the hippocampal CA1 region of adolescent mice.** *J Neurosci* 2019, **39**:6613-6625 <http://dx.doi.org/10.1523/JNEUROSCI.0380-19.2019>

The authors find ultrastructural evidence supporting sleep-dependent synaptic renormalization and extended wake-associated synapse formation and potentiation in the CA1 hippocampal region of adolescent mice. However, the effects of sleep and sleep deprivation are different on perforated and non-perforated synapses. Presynaptic morphological markers such as the total number of synaptic vesicles and the number of vesicles closer to the axon-spine-interface are also investigated.

50. Yamasaki M, Fukaya M, Yamazaki M, Azechi H, Natsume R, Abe M, Sakimura K, Watanabe M: **TARP  $\gamma$ -2 and  $\gamma$ -8 differentially control AMPAR density across schaffer collateral/commissural synapses in the hippocampal CA1 area.** *J Neurosci* 2016, **36**:4296-4312 <http://dx.doi.org/10.1523/JNEUROSCI.4178-15.2016>.
51. Ganeshina O, Berry RW, Petralia RS, Nicholson DA, Geinisman Y: **Differences in the expression of AMPA and NMDA receptors between axospinous perforated and nonperforated synapses are related to the configuration and size of postsynaptic densities.** *J Comp Neurol* 2004, **468**:86-95 <http://dx.doi.org/10.1002/cne.10950>.
52. de Vivo L, Nagai H, De Wispelaere N, Spano GM, Marshall W, Bellesi M, Nemecek KM, Schiereck SS, Nagai M, Tononi G, Cirelli C: **Evidence for sleep-dependent synaptic renormalization in mouse pups.** *Sleep* 2019, **42**(11):zsz184 <http://dx.doi.org/10.1093/sleep/zsz184>

The authors provide quantitative measures of sleep/wake behaviour and homeostatic sleep rebound after sleep deprivation in 2-week old mice. Using 3d-electron microscopy they also show that synaptic strength is

downscaled by 30% after sleep relative to enforced wake in the entire population of synapses, independent of synaptic size or presence of spine organelles.

53. Loewenstein Y, Yanover U, Rumpel S: **Predicting the dynamics of network connectivity in the neocortex.** *J Neurosci* 2015, **35**:12535-12544 <http://dx.doi.org/10.1523/JNEUROSCI.2917-14.2015>
- The authors developed a genetically encoded approach to label and visualize different types of cells at the electron microscope. By targeting peroxidase reporters to distinct cellular compartments, such as mitochondria, synaptic vesicles and endoplasmic reticulum, and combining it with Cre- and Flp- recombinase-dependent expression, it is possible to simultaneously visualize multiple neuronal populations in volume electron microscopy.
54. Poo M, Pignatelli M, Ryan TJ, Tonegawa S, Bonhoeffer T, Martin KC, Rudenko A, Tsai L-H, Tsien RW, Fishell G *et al.*: **What is memory? The present state of the engram.** *BMC Biol* 2016, **14** <http://dx.doi.org/10.1186/s12915-016-0261-6>.
  55. Zhang Q, Lee W-CA, Paul DL, Ginty DD: **Multiplexed peroxidase-based electron microscopy labeling enables simultaneous visualization of multiple cell types.** *Nat Neurosci* 2019, **22**:828-839 <http://dx.doi.org/10.1038/s41593-019-0358-7>.
  56. Holderith N, Lorincz A, Katona G, Rózsa B, Kulik A, Watanabe M, Nusser Z: **Release probability of hippocampal glutamatergic terminals scales with the size of the active zone.** *Nat Neurosci* 2012, **15**:988-997 <http://dx.doi.org/10.1038/nn.3137>.