

## Supplementary data

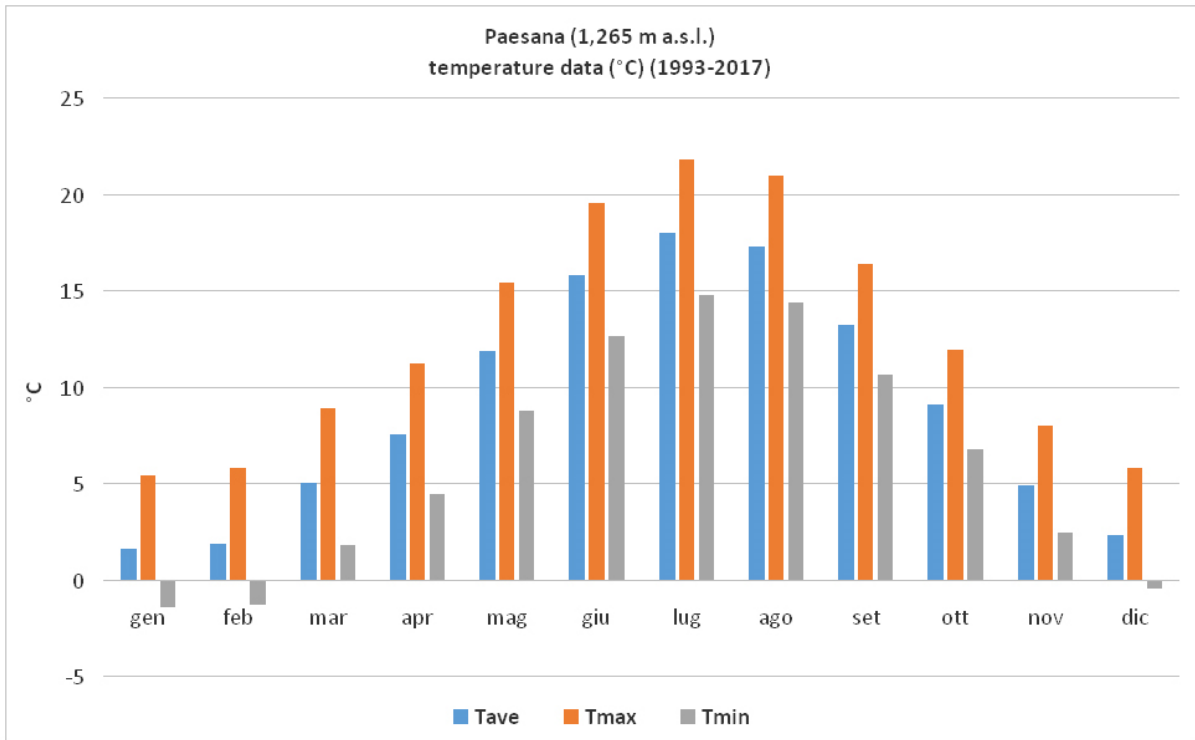
- 1.1. Area where the annual field trip of the working group for Floristics, Systematics and Evolution of the Italian Botanical Society took place, from 9 to 12 July 2014. For detailed topographic map of each site see Suppl. material 1: 6.
- 1.2. Monviso and the head of Po Valley.
  - 2.1. Temperature and rainfall data for the weather station of Paesana (1,265 m a.s.l.) in the period 1993-2017.
  - 2.2. Temperature and rainfall data for the weather station of Crissolo (1,342 m a.s.l.) in the period 2012-2017.
  - 2.3. Snowfall data for the weather stations of Paesana (1,265 m a.s.l.) and Pian Giasset (2,150 m a.s.l.) in the period 2002-2017.
3. The 34 participants to the field trip of the working group for Floristics, Systematics and Evolution of the Italian Botanical Society from 9 to 12 July 2014.
4. List of collecting sites, with reference number, date of collection, placename with short description, altitude, main habitats and cartographic coordinates (expressed using UTM projection, ED50 geodetic system, zone 32T). For detailed topographic map of each site see Suppl. material 1: 6.
5. Collection sites displayed on the Geological map of Italy (scale 1:100,000). For detailed code of each site see Suppl. material 1: 4.
6. Topographic maps (scale 1:20,000) with collecting sites. For detailed code of each site see Suppl. material 1: 4.
- 7.1 Public *herbaria* and private collections in which the *exsiccata* collected are kept. Acronyms of public collections refer to Thiers (2017).
- 7.2 Number of *exsiccata* kept in the different collections.
8. Number of *exsiccata* collected for each site. For detailed topographic map of each site see Suppl. material 1: 6.
9. Floristic list of taxa observed at the head of the Po Valley (Piedmont, province of Cuneo) with reference number of collecting site and *herbaria* collections (in brackets). For detailed code of each site see Suppl. material 1: 4, 7.1.



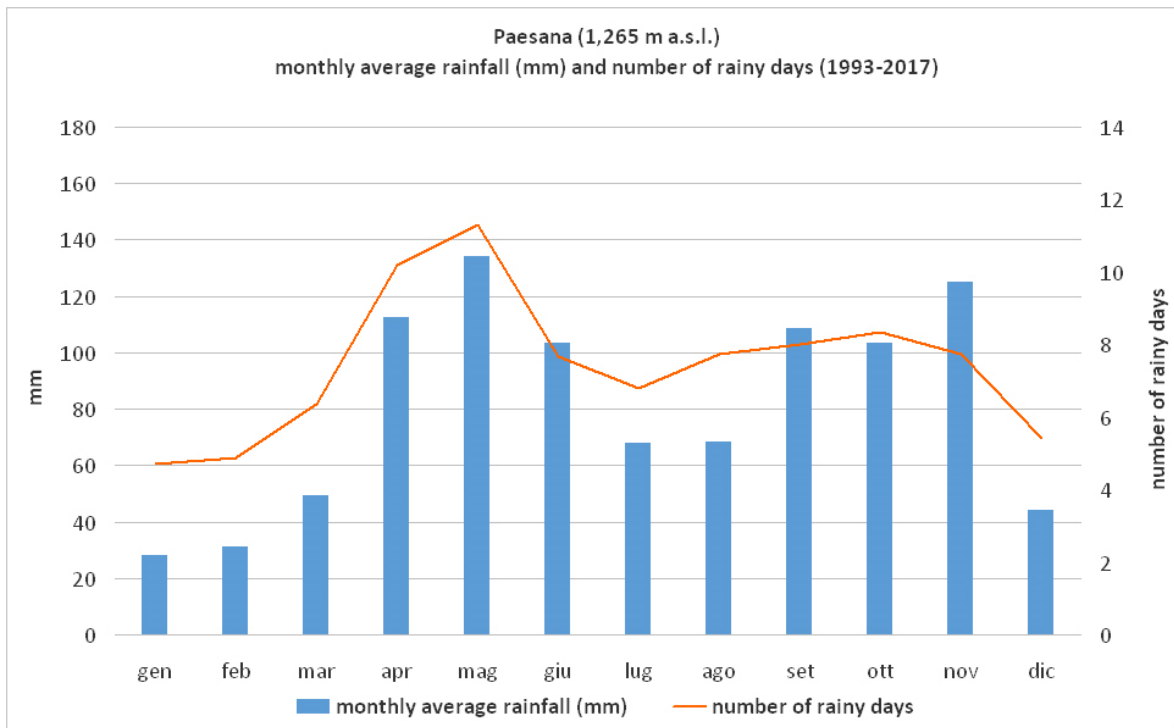
**1.1.** Area where the annual field trip of the working group for Floristics, Systematics and Evolution of the Italian Botanical Society took place, from 9 to 12 July 2014. Top left: Italy and Piedmont (solid red); Piedmont, Po Valley's municipalities (red edges) and Ostana, Oncino, Crissolo and Paesana municipalities, at the head of Po Valley (light red). For detailed topographic map of each site see Suppl. material 6.



**1.2.** Monviso and the head of Po Valley (from Serre Superiore, upstream Ostana, July 11, 2014, photo by A. Pistarino).



a)



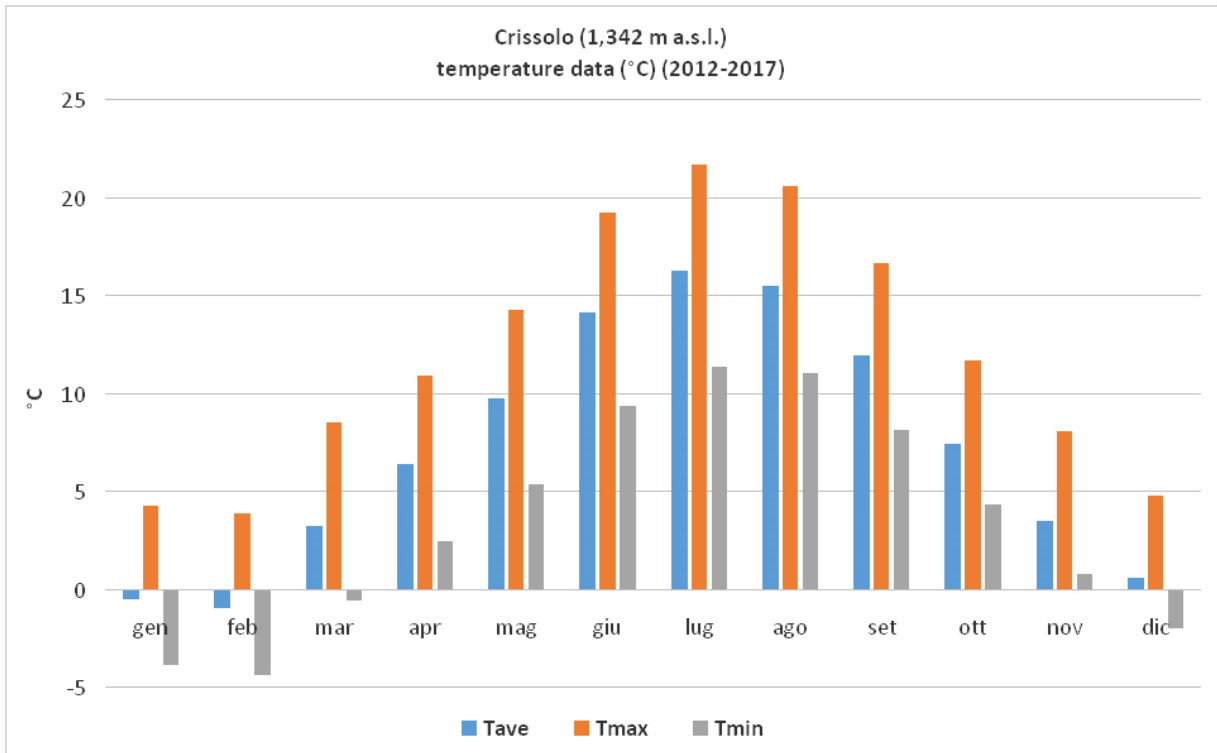
b)

**2.1. Temperature and rainfall data for the weather station of Paesana (1,265 m a.s.l.) in the period 1993-2017:**

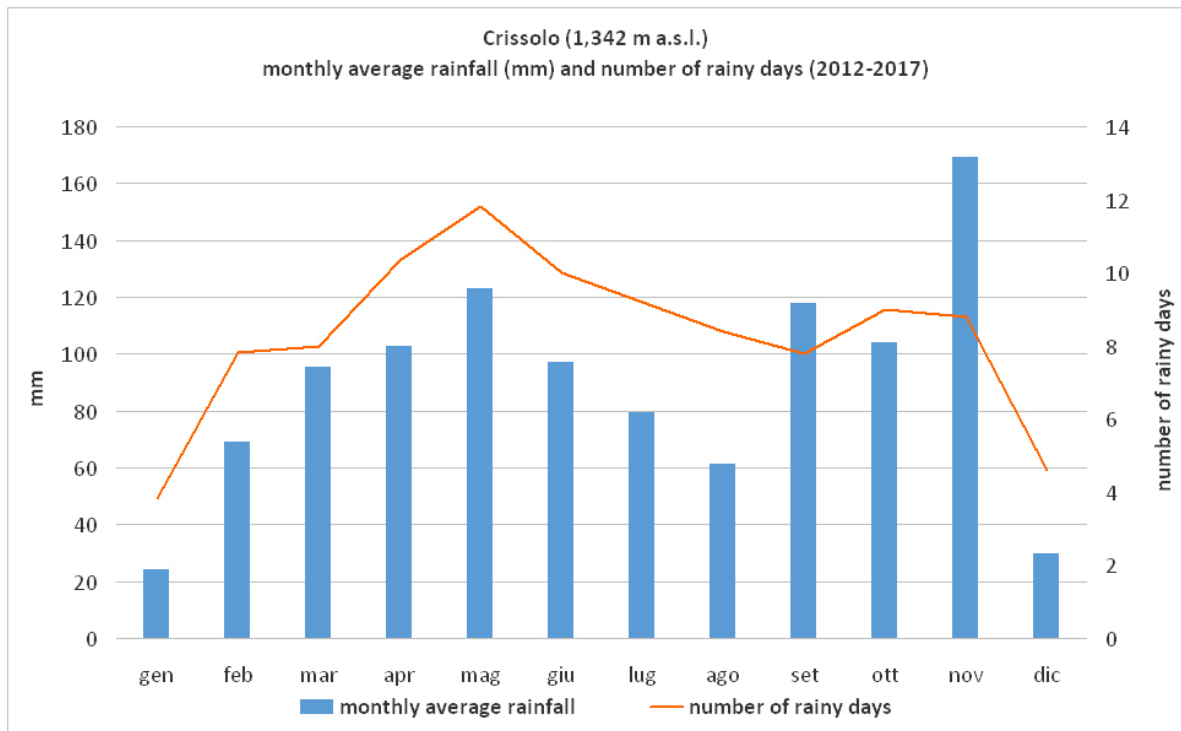
a) temperature data (average, maximum and minimum expressed in °C)

b) rainfall data (monthly average expressed in mm and number of rainy days).

Data provided by ARPA Piemonte.



a)



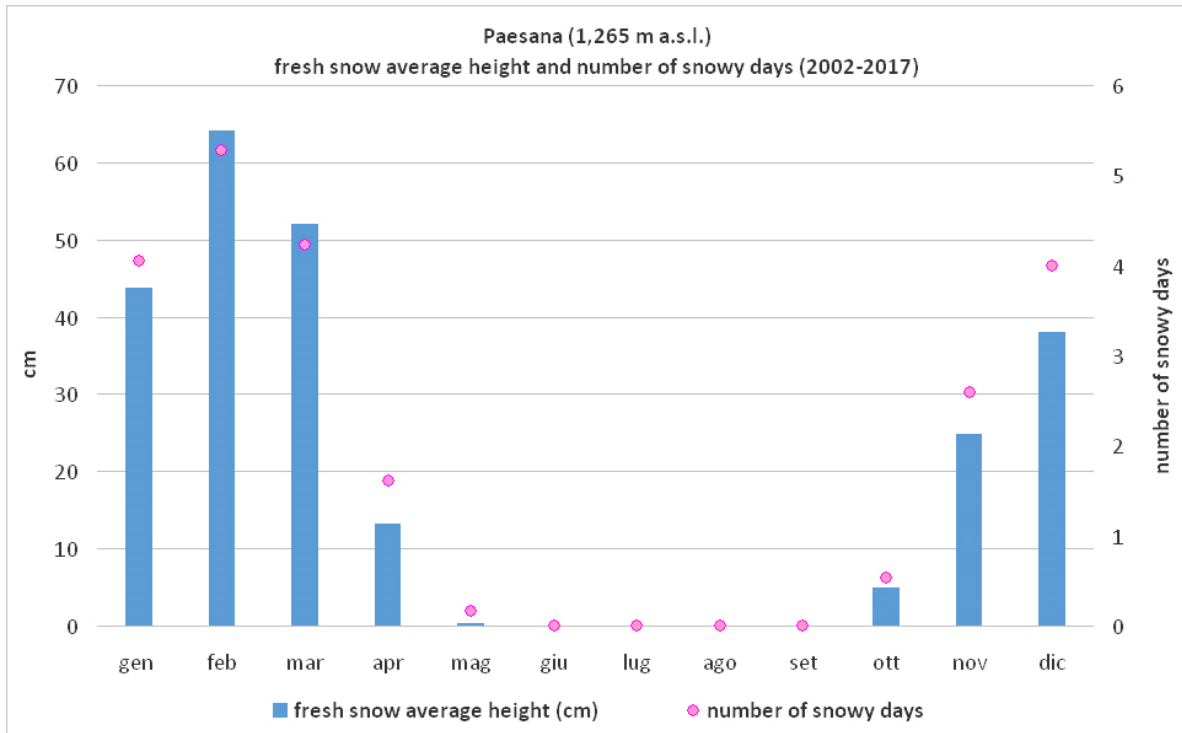
b)

**2.2. Temperature and rainfall data for the weather station of Crissolo (1,342 m a.s.l.) in the period 2012-2017:**

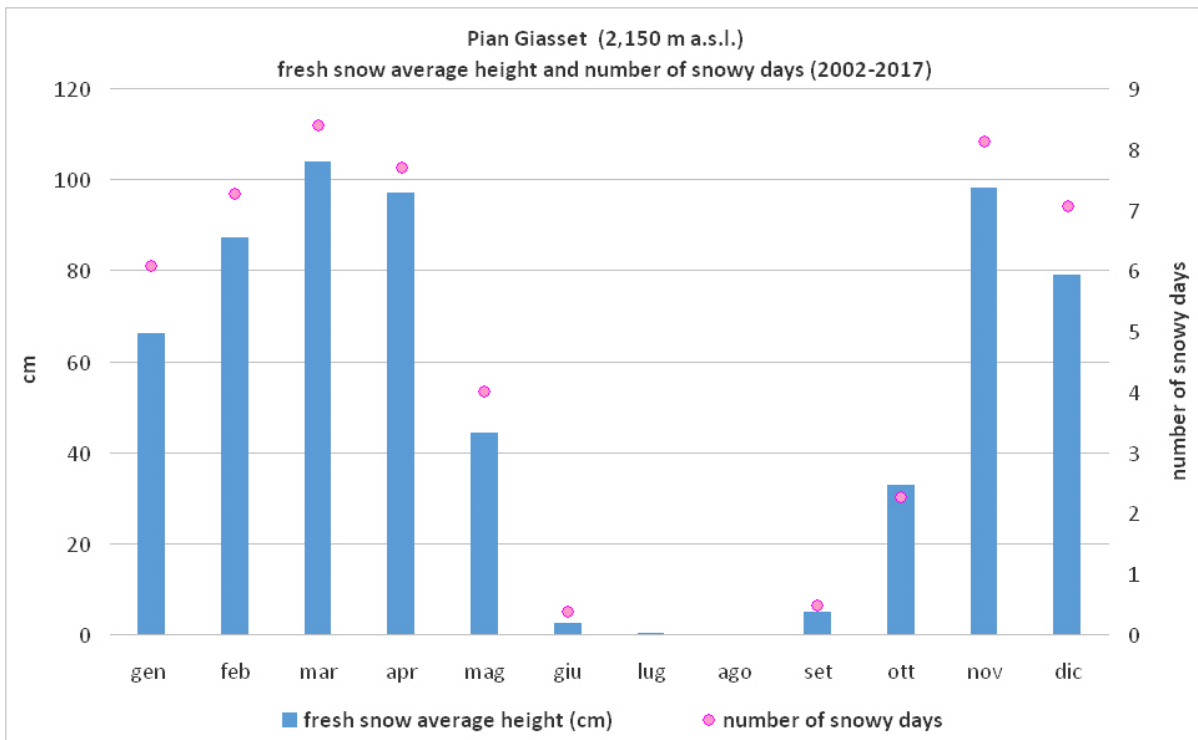
a) temperature data (average, maximum and minimum expressed in °C)

b) rainfall data (monthly average expressed in mm and number of rainy days).

Data provided by ARPA Piemonte.



a)



b)

**2.3. Snowfall data (fresh snow average height expressed in cm and number of snowy days) in the period 2002-2017:**

a) for the weather station of Paesana (1,265 m a.s.l.)

b) for the weather station of Pian Giasset (2,150 m a.s.l.), in Crissolo municipality

Data provided by ARPA Piemonte.



3. The 34 participants to the field trip of the working group for Floristics, Systematics and Evolution of the Italian Botanical Society, together with the staff of the “Parco del Monviso” (Annalisa Rebecchi and Marco Rastelli) (Alpetto Valley, July 10, 2014, photo by L. Rosati).

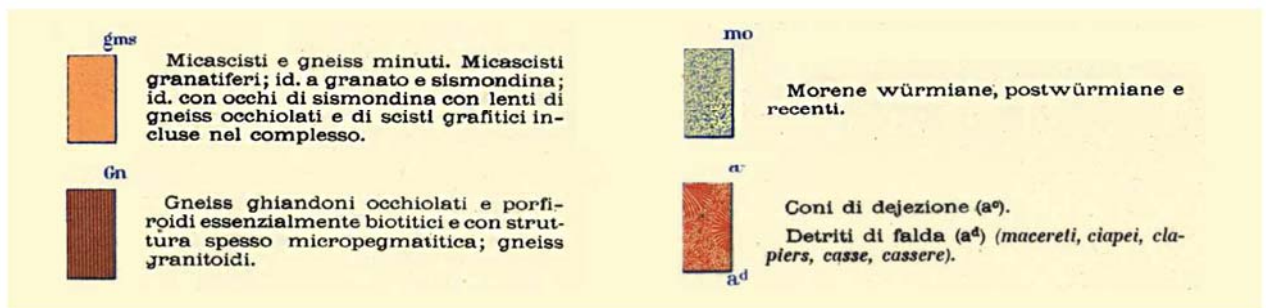
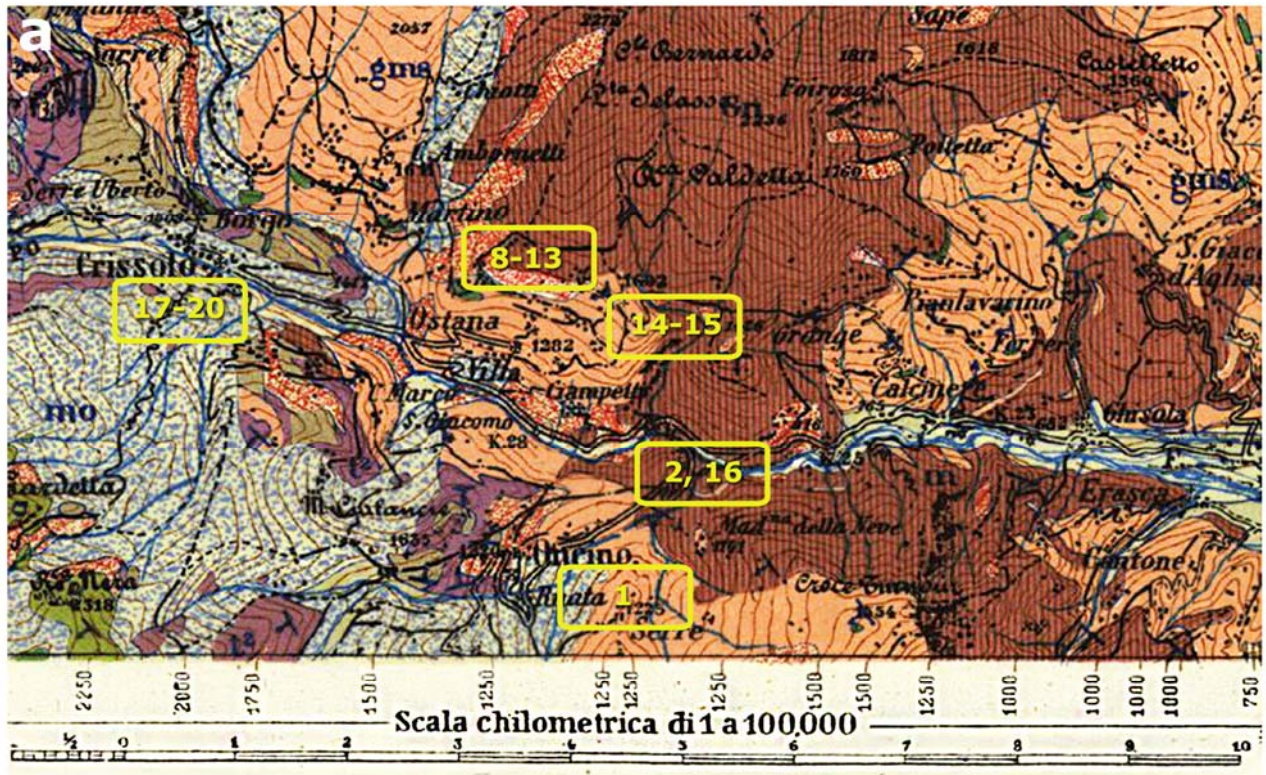
N.	DAY	LOCALITY	ALTITUDE (m a.s.l.)	HABITAT	UTM X	UTM Y
1	9/7/2014	Oncino, between hamlet of Ruata and hamlet of Serre; Savoia bridge over the Lenta stream	1110	Mixed deciduous forest; wet grassland	356906	4947636
2		Oncino, Rocca Bruenta; first hairpin bend upstream Laita bridge over the Po River	896-910	Siliceous cliff; roadside	358048	4949759
3	10/7/2014	Oncino, Alpetto Valley, Meire (huts) Dacant; path to the Alpetto Lake, right orographic side	1610-1670	Mixed deciduous forest alternating to pasture; shrub; pasture; grassland	354492	4947459
3,1		Oncino, Alpetto Valley; left orographic side, Rocca Bianca face	1850-1870	Calcareous cliff	354192	4947642
4		Oncino, Alpetto Valley; path to the Alpetto Lake, right orographic side, from mixed wood to Alpetto stream crossing	1670-1720	Pasture; stream edges	354196	4947264

4,1	10/7/2014	Oncino, Alpetto Valley; left orographic side, the base of the Rocca Bianca face	1680-1800	Debris, screes; pasture on calcareous substrate	353973	4947529
5		Oncino, Alpetto Valley: path to the Alpetto Lake, left orographic side	1850-1900	Pasture on siliceous substrate	353359	4947322
6		Oncino, Alpetto Valley; path to the Alpetto Lake, left orographic side, along the waterfall of the Alpetto stream	1900-2200	Pasture with outcropping rock and cliff	352708	4947406
6,1		Oncino, Alpetto Valley; left orographic side, at the base of the waterfall of the Alpetto stream	1850-1900	Pasture	353316	4947204
7		Oncino, Alpetto Valley; path to the Alpetto Lake, glacial plateau upstream "Gruppo di Alpetto"	2200-2260	Wet grassland and tall herbs	351967	4946943
8		11/7/2014	Ostana, Pian dei Ciarm, upstream of the hamlet of Meire Durandini	1630-1680	Pasture on siliceous substrate	357393
8,1	Ostana, Pian dei Ciarm, upstream of the hamlet of Meire Durandini.		1630	Wet area, spring	357508	4951405
9	Ostana, hamlet of Serre Superiore; captation of the aqueduct		1520-1550	Wet grassland	356447	4951677
10	Ostana, hamlet of Serre Superiore; upstream Bergeria (hut) del Serre and upstream of captation of the aqueduct		1550-1600	Pasture on siliceous substrate	356559	4951611
12	Ostana, hamlet of Serre Superiore		1520-1570	Pingue grassland	356621	4951409
13	Ostana, hamlet of Serre Superiore		1570-1580	Wet grassland	357040	4951307
13,1	Ostana, hamlet of Serre Superiore		1550-1570	Mixed deciduous forest with prevalence of <i>Laburnum</i> sp.	356804	4951311
14	Ostana, hamlet of Bernardi; San Nicolao Chapel, car parking		1412	Open space with embanked soil	357577	4950437
14,1	Ostana, hamlet of Bernardi; fountain		1415	Wetland area near the fountain	357392	4950548
15	Ostana, hamlet of Bernardi; Sentiero dei Morti (Path of the dead), right orographic side of the Laita stream		1412-1450	Mixed deciduous forest	357819	4950636
16	Paesana, at the border with Ostana, crossroads to Oncino; close to the Laita bridge, left orographic side of the Po River, above the provincial road n. 26		795-800	Chestnut wood	358033	4949896

17	12/7/2014	Crissolo, downstream Meire (huts) Giaromba; dirt road between provincial road n. 26 and bridge over the Po River	1535-1545	Pasture; pasture with anthropized areas	352378	4951776
18		Crissolo, track to Pian (plan) Giasset	1536-1850	Larch forest	353087	4951391
19		Crissolo, track to Pian (plan) Giasset, Meire (huts) Balmasse	1650	Pasture	353420	4950929
20		Crissolo, intermediate skilift departure to Pian (plan) Giasset	1845	Pasture	353087	4951391

**4.** List of collecting sites, with reference number, date of collection, placename with short description, altitude, main habitats and cartographic coordinates (expressed using UTM projection, ED50 geodetic system, zone 32T). For detailed topographic map of each site see Suppl. material 5-6.

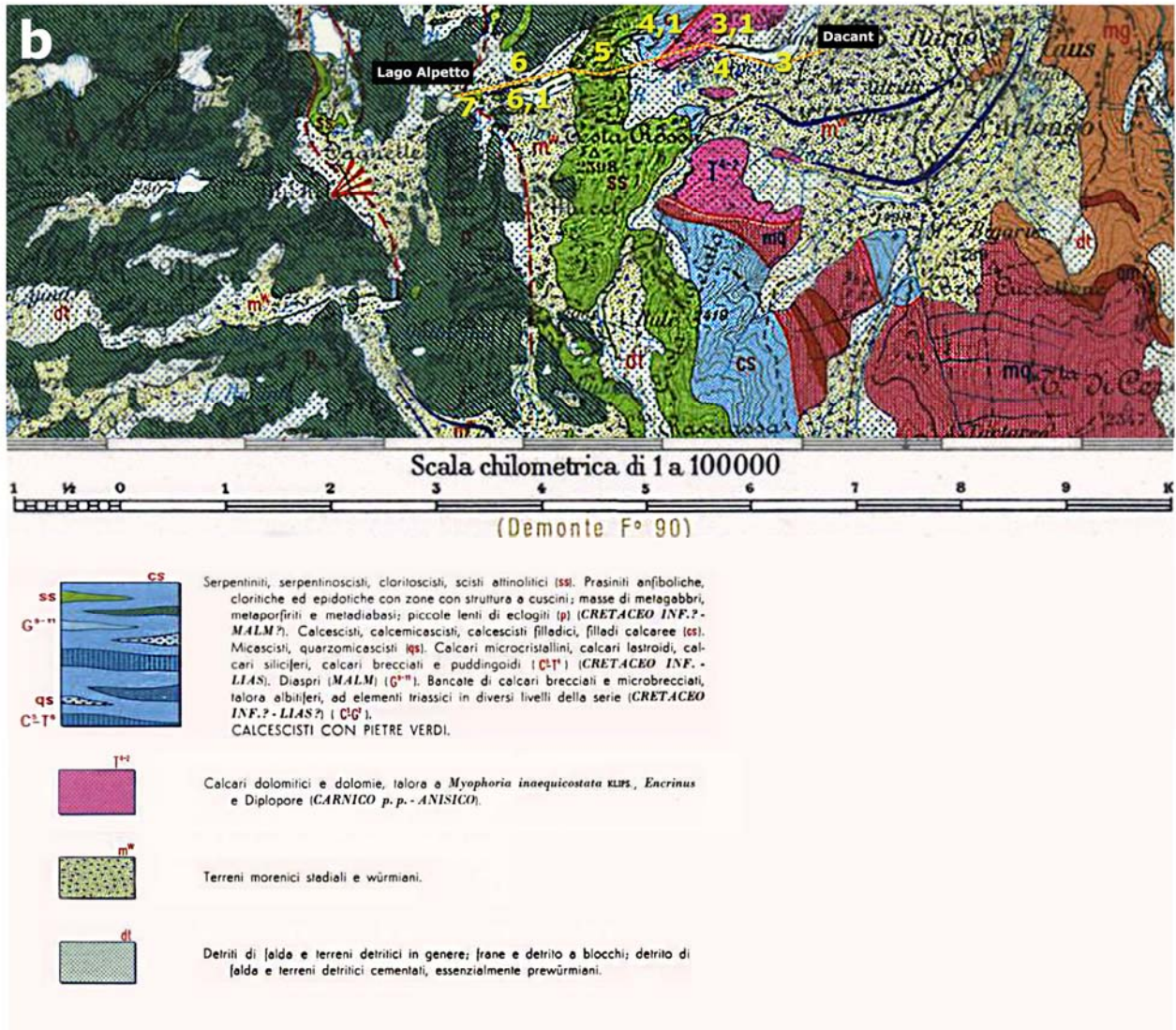




5. Collection sites displayed on the Geological map of Italy (scale 1:100,000). For detailed code of each site see Suppl. material 4.

a. Leaf 67 (Pinerolo); the lithologies of collection sites n. 1, 2, 8 to 13, 14 to 16 are related to Dora-Maira Massif:

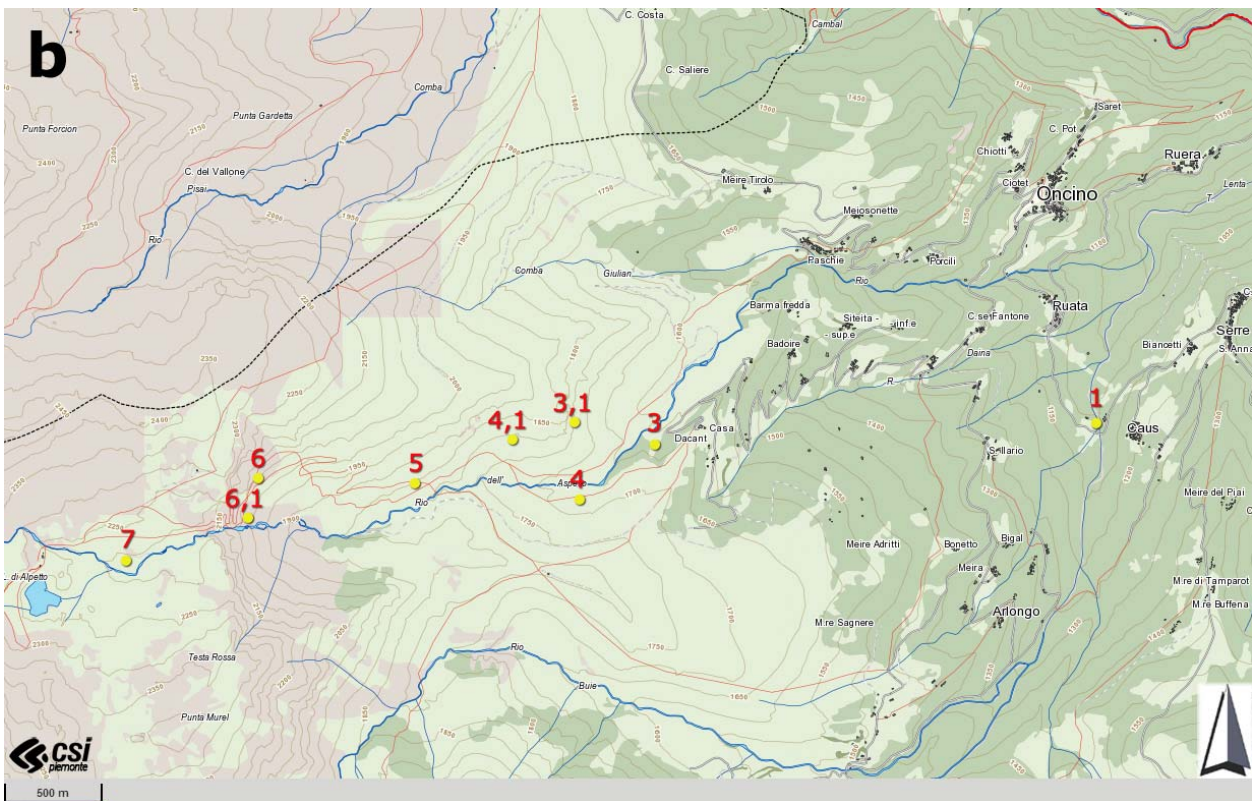
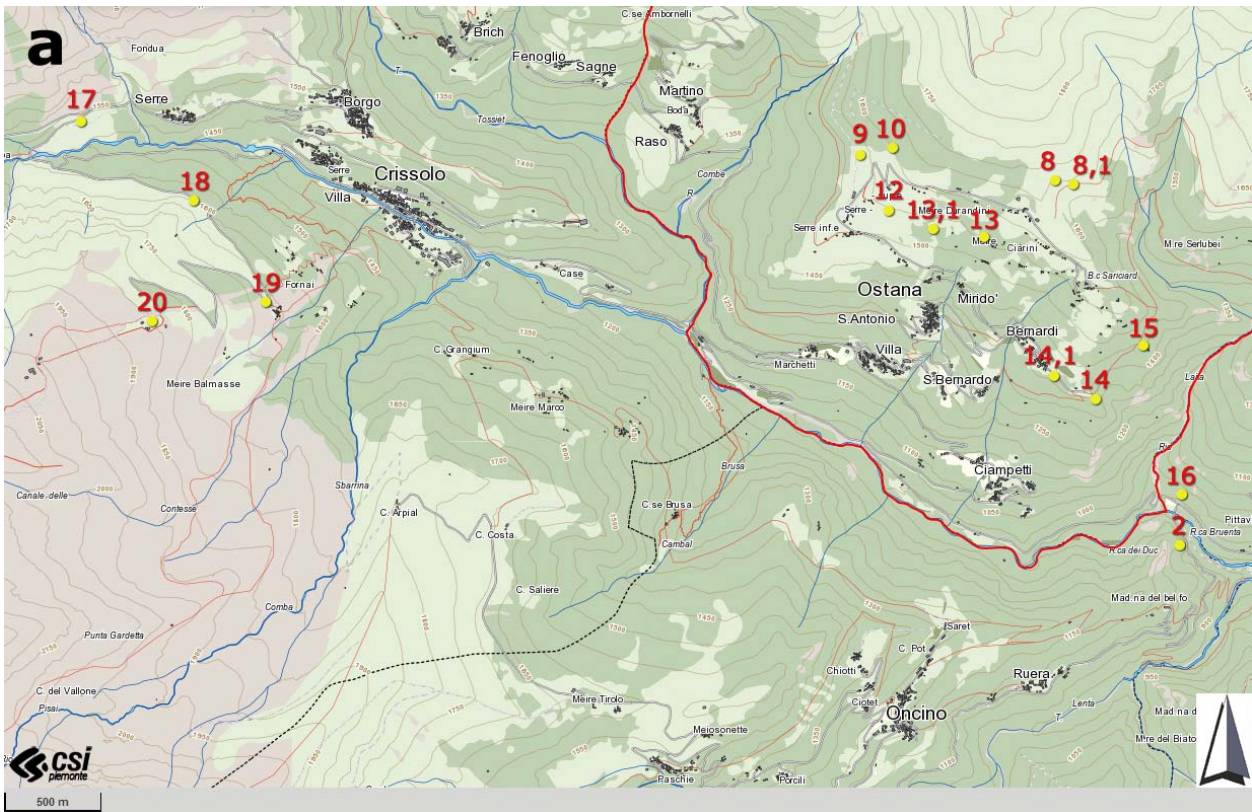
- n. 1: Oncino, between the hamlets of Ruata and Serre: micaschists and minute gneisses (gms), wurmian, postwurmian and recent morainic deposits (mo)
- n. 2, n. 16: Oncino-Paesana, the Laita bridge over the Po River: occhiadine gneisses (Gn)
- n. 8 to n. 13: Ostana, hamlet of Serre and Meire (huts) Durandini: debris and debris cones (a<sup>c</sup>, a<sup>d</sup>), micaschists and minute gneisses (gms), occhiadine gneisses (Gn)
- n. 14, n. 15: Ostana, hamlet of Bernardi: micaschists and minute gneisses (gms), occhiadine gneisses (Gn)
- n. 17 to n. 20: Crissolo, track to Pian Giasset: wurmian, postwurmian and recent morainic deposits (mo).



**b.** Leaf 78-79 (Argentera-Dronero): the lithologies of sites n. 3 to n.7 in Alpetto Valley are related to “Complex of calcschists with ophiolites”:

- n. 3 to n. 7: Oncino, Alpetto valley, from Meire (huts) Dacant (1,610 m a.s.l.) to the Alpetto Lake (2,260 m a.s.l.): morainic stadal and wurmian terrain (m<sup>w</sup>), limestone-dolomitic rocks and dolomias (T<sup>4-2</sup>), calcschists (cs), serpentinites, serpentinoschists ecc. (ss), amphibolic prasinites ecc. (p), debris (dt).

From: Geological map of Italy (scale 1:100,000): Leaf 67 Pinerolo (reprint Morganti 1951), Leaf 78-79 Argentera-Dronero (coord. Malaroda 1971), Italian Geological Service, Rome.



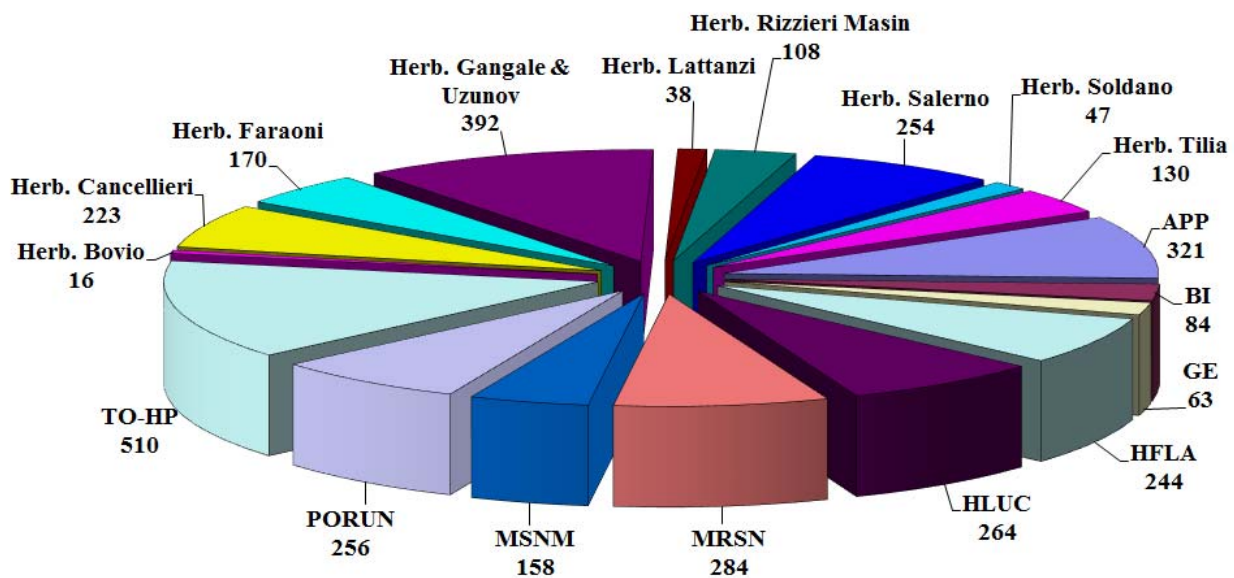
**6.** Topographic map (scale 1:20,000) with collecting sites (number and yellow dots). For detailed code of each site see Suppl. material 4. From: GeoPortale Piemonte (Regione Piemonte - <http://www.geoportale.piemonte.it/>).

a) July, 9 (site n. 2), July, 11 (from site n. 8 to n. 16), July, 12 (from site n. 17 to n. 20)

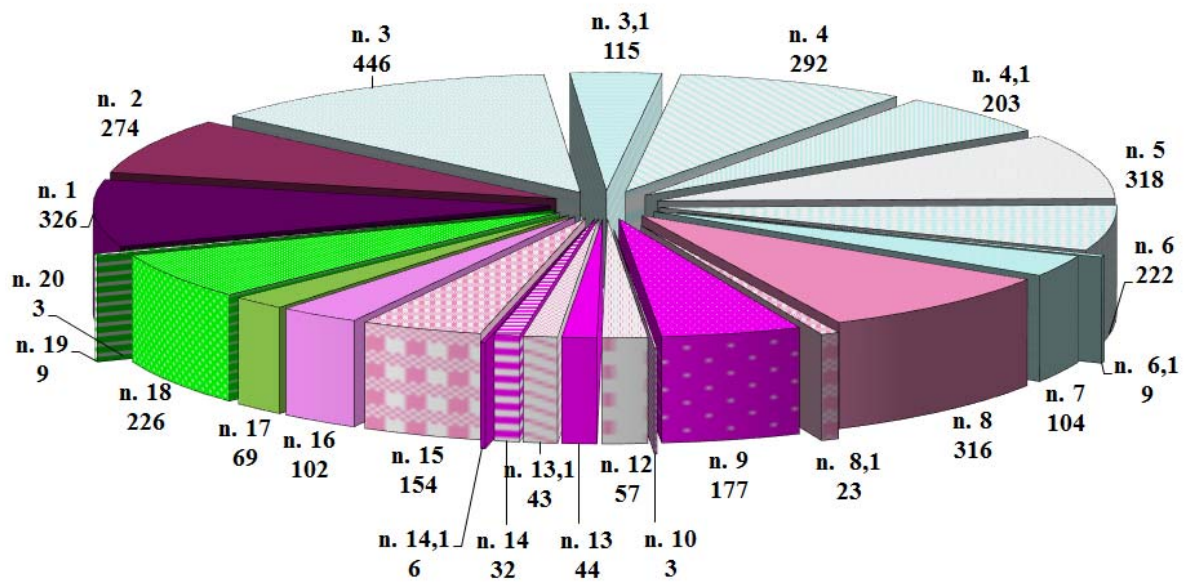
b) July, 9 (site n. 1) and July, 10 (from site n. 3 to n. 7).

<b>Herbarium code</b>	<b>Institution, place</b>
APP	Apennines Floristic Research Center, Barisciano (L'Aquila)
BI	Herbarium Horti Botanici Barensis, Museum Botanical Garden, University of Bari
GE	Botanical Institute Hanbury and Botanical Garden, University of Genova
HFLA	Herbarium Flaminio, Sapienza University of Rome
HLUC	Herbarium Lucanum, Basilicata University, Potenza
MRSN	Regional Museum of Natural Sciences, Turin, Italy
MSNM	Museum of Natural History, Milan
PORUN	Herbarium Porticense, University of Naples Federico II, Portici (Napoli)
TO-HP	Herbarium Pedemontanum, University of Turin
<b>Private collection code</b>	<b>Botanist, place</b>
Herb. Bovio	Maurizio Bovio, Aosta
Herb. Cancellieri	Laura Cancellieri, at URT, Roma Tre University
Herb. Faraoni	Francesco Faraoni, at URT, Roma Tre University
Herb. Gangale & Uzunov	Carmen Gangale & Dimitar Uzunov, San Fili (CS)
Herb. Lattanzi	Edda Lattanzi, Roma
Herb. Rizzieri Masin	Roberto Rizzieri Masin, Padova
Herb. Salerno	Giovanni Salerno, Roma
Herb. Soldano	Adriano Soldano, Vercelli
Herb. Tilia	Agnese Tilia, Roma

7.1 Public *herbaria* and private collections in which the *exsiccata* collected are kept. Acronyms of public collections refer to Thiers (2017).



7.2 Number of *exsiccata* kept in the different collections.



8. Number of *exsiccata* collected for each site (July, 9 in shades of purple colour; July, 10 in shades of light blue; July, 11 in shades of pink; July, 12 in shades of light green). For detailed topographic map of each site see Suppl. material 6.

9. Floristic list of taxa observed at the head of the Po Valley (Piedmont, province of Cuneo) with reference number of collecting site and *herbaria* collections (in brackets; code in Suppl. material 1: 7.1.). Letter “E” indicates endemic taxon for Italy; letter “e” refers to exclusive taxon; letter “A” indicates alien taxon, followed by “NAT” if naturalized taxon and INV if invasive taxon at a regional level. Symbol “\*\*” indicates taxon new for the regional flora and “\*” indicates confirmed taxon.

**Lycopodiopsida**

Lycopodiaceae

*Huperzia selago* (L.) Bernh. ex Schrank & Mart. subsp. *selago*

3 (Herb. Gangale & Uzunov), 5 (GE, Herb. Salerno), 8 (Herb. Rizzieri Masin)

*Lycopodium clavatum* L.

4 (TO-HP), 5 (APP)

Selaginellaceae

*Selaginella helvetica* (L.) Spring

2 (APP, TO-HP, Herb. Rizzieri Masin), 3 (TO-HP, Herb. Cancellieri, Herb. Gangale & Uzunov, Herb. Salerno, Herb. Tilia), 4 (MSNM, PORUN, Herb. Cancellieri), 4,1 (Herb. Salerno), 5 (APP), 8 (Herb. Rizzieri Masin), 18 (Herb. Cancellieri 2 es.)

*Selaginella selaginoides* (L.) P.Beauv. ex Schrank & Mart.

3 (Herb. Tilia), 4 (PORUN, Herb. Cancellieri), 4,1 (Herb. Salerno), 5 (APP), 6 (TO-HP), 18 (PORUN, Herb. Cancellieri)

**Polypodiopsida**

**Equisetidae**

Equisetaceae

*Equisetum arvense* L.

5 (PORUN), 17 (TO-HP)

**Ophioglossidae**

Ophioglossaceae

*Botrychium lunaria* (L.) Sw.

4 (PORUN), 5 (Herb. Salerno), 6 (MSNM, TO-HP, Herb. Faraoni, Herb. Gangale & Uzunov)

**Polypodiidae**

Pteridaceae

*Cryptogramma crispera* (L.) R.Br. ex Hook.

3 (TO-HP Herb. Gangale & Uzunov, Herb. Salerno, Herb. Tilia), 4 (BI, HLUC, MRSN, PORUN), 5 (APP, TO-HP), 6 (Herb. Cancellieri), 7 (TO-HP), 8 (Herb. Cancellieri, Herb. Faraoni, Herb. Rizzieri Masin)

Dennstaedtiaceae

*Pteridium aquilinum* (L.) Kuhn subsp. *aquilinum*

16 (TO-HP)

Cystopteridaceae

*Cystopteris dickieana* R. Sim  
6 (GE)

*Cystopteris fragilis* (L.) Bernh.  
2 (HLUC), 3 (TO-HP), 14,1 (HLUC), 18 (PORUN, Herb. Gangale & Uzunov)

*Gymnocarpium dryopteris* (L.) Newman  
3 (HFLA, TO-HP, Herb. Gangale & Uzunov), 4 (PORUN), 5 (MRSN), 7 (TO-HP)

*Gymnocarpium robertianum* (Hoffm.) Newman  
18 (PORUN, Herb. Gangale & Uzunov 2 es.)

Aspleniaceae

*Asplenium adiantum-nigrum* L. subsp. *adiantum-nigrum*  
2 (HFLA, Herb. Rizzieri Masin)

*Asplenium cuneifolium* Viv. subsp. *cuneifolium*  
4 (PORUN, Herb. Rizzieri Masin), 6 (GE, TO-HP)

*Asplenium ruta-muraria* L. subsp. *ruta-muraria*  
4,1 (Herb. Gangale & Uzunov, Herb. Soldano)

*Asplenium septentrionale* (L.) Hoffm. subsp. *septentrionale*  
2 (APP, MRSN, PORUN, TO-HP, Herb. Cancellieri), 3 (HLUC, Herb. Salerno), 4 (PORUN), 4,1 (Herb. Salerno), 5 (MRSN), 6 (GE), 8 (PORUN)

*Asplenium trichomanes* L. subsp. *trichomanes*  
1 (MRSN, Herb. Tilia), 2 (HLUC, Herb. Gangale & Uzunov), 6 (GE)

*Asplenium viride* Huds.  
4 (MSNM, PORUN, Herb. Lattanzi), 5 (MRSN, Herb. Cancellieri), 6 (HLUC)

Athyriaceae

*Athyrium distentifolium* Tausch ex Opiz  
1 (HFLA, TO-HP), 3 (Herb. Rizzieri Masin), 4 (Herb. Rizzieri Masin), 8 (TO-HP), 14 (TO-HP)

*Athyrium filix-femina* (L.) Roth  
1 (APP 2 es., HLUC), 3 (TO-HP), 4 (PORUN), 17 (TO-HP)

Thelypteridaceae

*Oreopteris limbosperma* (All.) Holub  
2 (TO-HP)

*Phegopteris connectilis* (Michx.) Watt

3 (GE, MRSN, Herb. Salerno), 7 (Herb. Salerno), 18 (TO-HP)

#### Dryopteridaceae

*Dryopteris cambrensis* (Fraser-Jenk.) J.Beitel & W.R.Buck subsp. *insubrica* (Oberh. & Tavel ex Fraser-Jenk.) Fraser-Jenk.

[*Dryopteris affinis* (Lowe) Fraser-Jenk. subsp. *cambrensis* Fraser-Jenk.]

1 (HFLA), 2 (HFLA, TO-HP, Herb. Rizzieri Masin), 3 (MSNM, TO-HP), 4 (HLUC), 5 (Herb. Gangale & Uzunov), 8 (Herb. Cancellieri, Herb. Soldano), 9 (TO-HP, Herb. Rizzieri Masin), 13, 1 (TO-HP), 16 (TO-HP)

*Dryopteris cambrensis* (Fraser-Jenk.) J.Beitel & W.R.Buck cfr. subsp. *insubrica* (Oberh. & Tavel ex Fraser-Jenk.) Fraser-Jenk.

13 (HLUC), 15 (TO-HP, Herb. Gangale & Uzunov)

*Dryopteris carthusiana* (Vill.) H.P.Fuchs

1 (MSNM), 4 (Herb. Rizzieri Masin)

*Dryopteris dilatata* (Hoffm.) A.Gray

3 (MRSN, MSNM), 8 (Herb. Rizzieri Masin), 9 (APP)

*Dryopteris filix-mas* (L.) Schott

1 (HFLA)

*Polystichum lonchitis* (L.) Roth

3 (PORUN, TO-HP), 4 (HLUC, MRSN, PORUN, Herb. Rizzieri Masin)

#### Polypodiaceae

*Polypodium vulgare* L.

1 (HLUC, MSNM, PORUN, TO-HP, Herb. Gangale & Uzunov, Herb. Rizzieri Masin, Herb. Salerno), 2 (HFLA, HLUC, TO-HP), 3 (BI, MRSN), 14 (Herb. Rizzieri Masin)

#### Pinidae

#### Pinaceae

*Abies alba* Mill.

18 (PORUN)

*Larix decidua* Mill.

8 (BI, MRSN, PORUN, TO-HP)

#### Cupressaceae

*Juniperus communis* L.

5 (Herb. Salerno), 8 (HLUC, MRSN, TO-HP), 18 (TO-HP)

#### Monocots

#### Tofieldiaceae

*Tofieldia calyculata* (L.) Wahlenb.



3 (TO-HP), 3,1 (HFLA), 4 (PORUN), 4,1 (Herb. Salerno), 6 (APP), 17 (HLUC), 18 (PORUN, Herb. Cancellieri, Herb. Gangale & Uzunov, Herb. Faraoni, Herb. Salerno)

#### Melanthiaceae

##### *Paris quadrifolia* L.

1 (Herb. Gangale & Uzunov, Herb. Rizzieri Masin), 18 (Herb. Salerno)

##### *Veratrum album* L.

[includes *V. lobelianum* Bernh.]

1 (APP, HFLA, Herb. Faraoni), 6,1 (Herb. Gangale & Uzunov), 9 (HLUC), 12 (PORUN, Herb. Cancellieri), 13,1 (MSNM, Herb. Tilia)

The specimens are determined both as *V. album* and *V. lobelianum* Bernh. In Bartolucci et al. (2018) *V. lobelianum* is included in *V. album*.

#### Colchicaceae

##### *Colchicum autumnale* L.

3 (TO-HP), 4,1 (TO-HP)

#### Liliaceae

##### *Lilium bulbiferum* L. subsp. *croceum* (Chaix) Jan

3,1 (HFLA), 15 (TO-HP)

#### Orchidaceae

##### *Anacamptis pyramidalis* (L.) Rich.

3,1 (APP)

##### *Coeloglossum viride* (L.) Hartm.

1 (Herb. Rizzieri Masin), 4 (no *exsiccatum* photo Stinca), 4,1 (Herb. Soldano), 5 (no *exsiccatum* photo by Romano)

##### *Dactylorhiza maculata* (L.) Soó subsp. *fuchsii* (Druce) Hyl.

1 (APP, HLUC, HFLA), 4 (HLUC, PORUN), 9 (APP, HLUC, PORUN), 13 (HLUC, Herb. Gangale & Uzunov), 17 (HLUC)

##### *Epipactis atrorubens* (Hoffm.) Besser

3,1 (APP)

##### *Gymnadenia conopsea* (L.) R.Br.

4 (HLUC, PORUN), 5 (HLUC)

##### *Gymnadenia odoratissima* (L.) Rich.

18 (PORUN)

##### *Herminium monorchis* (L.) R.Br.

3 (PORUN, TO-HP, Herb. Cancellieri), 4,1 (Herb. Soldano), 5 (APP)

##### *Neotinea ustulata* (L.) R.M.Bateman, Pridgeon & M.W.Chase

[*Orchis ustulata* L.]

3,1 (APP), 4 (Herb. Rizzieri Masin), 5 (HLUC)

*Neottia ovata* (L.) Bluff & Fingerh.

[*Listera ovata* (L.) R.Br.]

17 (HLUC)

*Nigritella corneliana* (Beauverd) Götz & H.R.Reinhard

5 (HLUC, no *exsiccatum* photo by Fervier), 6 (APP)

*Nigritella rhellicani* Teppner & E.Klein

3 (HFLA, PORUN), 5 (APP, HLUC, no *exsiccatum* photo by Fervier)

*Platanthera bifolia* (L.) Rich.

4 (no *exsiccatum* photo by Romano)

*Platanthera chlorantha* (Custer) Rchb.

3 (PORUN)

#### Asphodelaceae

*Asphodelus macrocarpus* Parl. subsp. *macrocarpus*

13,1 (APP, MSNM)

The two specimens are not ripe enough to clearly show the capsule characters considered distinctive between *A. macrocarpus* and *A. albus* Mill. subsp. *delphinensis* (Gren. & godr.) Z. Diaz & Valdés in Diaz Lifante and Valdés (1996); moreover, these characters seem to be not significant or overlapping in north-west Italian populations. Currently only the presence of *A. macrocarpus* Parl. subsp. *macrocarpus* is assessed, while the presence of *A. albus* subsp. *delphinensis* is generically given in Diaz Lifante and Valdes (1996) in the Western Alps, but it has to be confirmed in Piedmont.

#### Asparagaceae

*Maianthemum bifolium* (L.) F.W. Schmidt

1 (Herb. Salerno), 3 (HLUC, MRSN, PORUN, TO-HP, Herb. Salerno), 4 (Herb. Lattanzi), 18 (Herb. Faraoni, Herb. Gangale & Uzunov)

*Ornithogalum kochii* Parl. subsp. *monticola* (Jord. & Fourr.) Peruzzi

[*Ornithogalum monticolum* Jord. & Fourr.]

6 (APP, MSNM), 9 (HLUC), 17 (BI), 18 (APP, HFLA, PORUN, Herb. Lattanzi)

*Paradisea liliastrum* (L.) Bertol.

3,1 (HFLA), 4 (BI, PORUN), 6 (APP, MRSN, Herb. Faraoni, Herb. Gangale & Uzunov)

*Polygonatum multiflorum* (L.) All.

16 (Herb. Salerno)

*Polygonatum odoratum* (Mill.) Druce

4,1 (Herb. Soldano)

*Polygonatum verticillatum* (L.) All.

3,1 (HFLA), 4 (PORUN), 4,1 (Herb. Salerno, Herb. Soldano), 5 (no *exsiccatum* photo by Rosati), 6 (Herb. Cancellieri)

#### Juncaceae

***Juncus alpinoarticulatus*** Chaix subsp. *alpinoarticulatus*

3,1 (MSNM), 4 (PORUN)

***Juncus articulatus*** L. subsp. *articulatus*

5 (Herb. Cancellieri), 8 (MRSN), 9 (Herb. Cancellieri, Herb. Gangale & Uzunov Herb. Salerno)

***Juncus bufonius*** L.

9 (MRSN, MSNM, Herb. Gangale & Uzunov, Herb. Salerno, Herb. Tilia)

***Juncus conglomeratus*** L.

8 (Herb. Salerno), 9 (PORUN)

***Juncus effusus*** L. subsp. *effusus*

8 (MRSN), 9 (HLUC, MRSN), 13 (HFLA)

***Juncus filiformis*** L.

4 (TO-HP)

***Juncus jacquinii*** L.

7 (MRSN, TO-HP)

A INV ***Juncus tenuis*** Willd.

9 (APP, HFLA, HLUC, MRSN, MSNM, Herb. Gangale & Uzunov, Herb. Salerno, Herb. Tilia)

***Juncus triglumis*** L. subsp. *triglumis*

4 (TO-HP), 7 (Herb. Cancellieri)

***Luzula alpinopilosa*** (Chaix) Breistr. subsp. *alpinopilosa*

4,1 (TO-HP), 5 (MRSN), 6,1 (Herb. Gangale & Uzunov)

***Luzula lutea*** (All.) DC. subsp. *lutea*

6 (Herb. Cancellieri)

***Luzula luzulina*** (Vill.) Racib.

18 (Herb. Gangale & Uzunov)

***Luzula luzuloides*** (Lam.) Dandy & Wilmott subsp. *luzuloides*

1 (Herb. Gangale & Uzunov), 9 (Herb. Rizzieri Masin)

***Luzula multiflora*** (Ehrh.) Lej. subsp. *multiflora*

3 (HFLA), 3,1 (HFLA), 5 (TO-HP), 5 (Herb. Gangale & Uzunov 2 es.), 8 (MRSN, TO-HP), 8,1 (Herb. Gangale & Uzunov), 9 (HLUC), 15 (HFLA, Herb. Gangale & Uzunov), 18 (Herb. Cancellieri)

After the revision of these *Luzula* specimens, in 2017 the revision of a specimen collected in the Po Valley (Crissolo municipality) made by the specialist of the genus *Luzula* Bačič led to assess for the first time the presence of *L. expectata* Bačič & Jogan in Piedmont (Pascale et al. 2017). Given its

close morphological similarity with *L. multiflora*, *L. sudetica* (Willd.) Schult. and *L. alpina* Hoppe (Bačić et al. 2007, Pignatti 2017), an in-depth or a specialist revision of the specimens collected is recommended (A. Selvaggi, pers. comm.).

***Luzula nivea*** (Nathh.) DC.

1 (APP, HFLA, TO-HP), 2 (TO-HP), 3 (HFLA, TO-HP, Herb. Gangale & Uzunov), 4 (PORUN, Herb. Faraoni, Herb. Rizzieri Masin), 8 (MRSN, Herb. Cancellieri), 9 (HLUC), 12 (Herb. Cancellieri), 13,1 (HFLA, Herb. Gangale & Uzunov), 15 (BI, MSNM, TO-HP, Herb. Cancellieri, Herb. Faraoni), 16 (GE, HFLA, MRSN, TO-HP), 18 (TO-HP)

***Luzula pedemontana*** Boiss. & Reut.

16 (GE, HFLA, MRSN, Herb. Bovio)

***Luzula sudetica*** (Willd.) Schult.

1 (Herb. Tilia), 3 (Herb. Faraoni), 4 (Herb. Faraoni)

***Oreojuncus trifidus*** (Jacq.) Záv. Drábk. & Kirschner

[*Juncus trifidus* L. subsp. *trifidus*]

3 (Herb. Rizzieri Masin), 3,1 (MSNM), 4 (PORUN), 4,1 (Herb. Salerno), 5 (HLUC), 5 (Herb. Gangale & Uzunov), 6 (MRSN, Herb. Cancellieri, Herb. Gangale & Uzunov), 7 (Herb. Salerno)

Cyperaceae

***Blasmus compressus*** (L.) Panz. ex Link

5 (MRSN, PORUN, TO-HP)

***Carex australpina*** Bech.

[*Carex ferruginea* Scop. subsp. *australpina* (Bech.) W. Dietr.]

3,1 (MRSN, MSNM, TO-HP), 18 (Herb. Gangale & Uzunov)

Following Molina et al. (2011).

***Carex capillaris*** L. subsp. *capillaris*

5 (MRSN, TO-HP, Herb. Cancellieri)

***Carex caryophyllea*** Latourr.

4,1 (MRSN, TO-HP), 5 (MRSN, Herb. Cancellieri), 8 (APP, PORUN)

***Carex davalliana*** Sm.

4,1 (MRSN, TO-HP), 5 (PORUN)

***Carex demissa*** Hornem.

5 (TO-HP)

***Carex digitata*** L.

4 (TO-HP), 18 (Herb. Gangale & Uzunov)

***Carex echinata*** Murray

4,1 (MRSN, TO-HP), 5 (PORUN), 7 (TO-HP), 8 (APP 2 es.), 8,1 (Herb. Gangale & Uzunov), 9 (HFLA, HLUC, MRSN, PORUN, Herb. Cancellieri, Herb. Faraoni, Herb. Rizzieri Masin, Herb. Salerno, Herb. Tilia)

***Carex fimbriata*** Schkuhr

3 (TO-HP), 3,1 (MSNM, TO-HP), 4,1 (MRSN, Herb. Tilia)

***Carex flacca*** Schreb. subsp. *flacca*

3,1 (TO-HP), 4 (PORUN), 4,1 (Herb. Tilia), 5 (APP, MRSN, Herb. Cancellieri, Herb. Gangale & Uzunov 3 es.), 18 (TO-HP, Herb. Gangale & Uzunov)

***Carex flava*** L.

1 (Herb. Cancellieri 2 es., Herb. Gangale & Uzunov), 3 (TO-HP), 3,1 (TO-HP), 8 (APP, MRSN), 8,1 (Herb. Gangale & Uzunov), 9 (HLUC), 13 (TO-HP, Herb. Cancellieri, Herb. Gangale & Uzunov), 13,1 (Herb. Tilia)

***Carex frigida*** All.

3 (HFLA), 4,1 (TO-HP, Herb. Tilia), 5 (Herb. Gangale & Uzunov)

***Carex humilis*** Leyss.

3,1 (MRSN, TO-HP)

***Carex lepidocarpa*** Tausch subsp. *lepidocarpa*

3,1 (MRSN, TO-HP), 5 (Herb. Cancellieri)

***Carex lepidocarpa*** Tausch x *Carex demissa* Hornem.

4,1 (Herb. Tilia)

***Carex leporina*** L.

[*Carex ovalis* Gooden.]

4 (MRSN, TO-HP), 8 (MRSN, Herb. Salerno, Herb. Tilia), 8,1 (Herb. Gangale & Uzunov), 9 (HFLA, HLUC, MRSN, Herb. Cancellieri, Herb. Faraoni, Herb. Salerno), 13 (Herb. Gangale & Uzunov)

***Carex mucronata*** All.

3,1 (HFLA, MRSN, TO-HP 2 es.), 4 (Herb. Cancellieri), 4,1 (Herb. Gangale & Uzunov, Herb. Tilia), 5 (Herb. Bovio), 6 (APP)

***Carex muricata*** L.

3,1 (MRSN, TO-HP), 4,1 (Herb. Gangale & Uzunov)

***Carex nigra*** (L.) Reichard subsp. *nigra*

5 (Herb. Gangale & Uzunov), 7 (MRSN, TO-HP), 8,1 (TO-HP, Herb. Gangale & Uzunov 3 es.), 9 (HFLA, Herb. Rizzieri Masin), 13 (Herb. Cancellieri, Herb. Gangale & Uzunov, Herb. Rizzieri Masin), 13,1 (Herb. Tilia)

This is the only subspecies assessed in Italy, for the moment it's not possible to distinguish other subspecies on the Alps.

***Carex ornithopoda*** Willd.

3 (Herb. Gangale & Uzunov), 4 (TO-HP), 4,1 (TO-HP, Herb. Tilia), 5 (Herb. Gangale & Uzunov), 18 (TO-HP, Herb. Cancellieri 2 es.)

***Carex pallescens*** L.

1 (TO-HP, Herb. Cancellieri, Herb. Gangale & Uzunov, Herb. Salerno, Herb. Tilia), 3 (MRSN, TO-HP, Herb. Cancellieri, Herb. Gangale & Uzunov, Herb. Salerno, Herb. Tilia), 4 (Herb. Cancellieri, Herb. Faraoni), 4,1 (Herb. Salerno, Herb. Tilia), 8 (APP), 8,1 (Herb. Gangale & Uzunov), 9 (HLUC, Herb. Cancellieri, Herb. Faraoni, Herb. Salerno, Herb. Tilia), 13 (HFLA, Herb. Cancellieri), 18 (Herb. Cancellieri)

***Carex panicea* L.**

4 (PORUN, Herb. Faraoni), 4,1 (Herb. Tilia), 5 (MRSN, TO-HP, Herb. Cancellieri, Herb. Gangale & Uzunov 2 es.), 8,1 (Herb. Gangale & Uzunov)

***Carex paniculata* L. subsp. *paniculata***

1 (Herb. Gangale & Uzunov), 4 (BI, PORUN), 4,1 (MRSN, TO-HP)

***Carex pilulifera* L. subsp. *pilulifera***

8 (TO-HP, Herb. Gangale & Uzunov, Herb. Tilia)

***Carex sempervirens* Vill. subsp. *sempervirens***

3 (HFLA, Herb. Cancellieri), 3,1 (HFLA), 4 (PORUN 2 es., Herb. Cancellieri), 4,1 (MRSN, TO-HP, Herb. Gangale & Uzunov, Herb. Tilia), 5 (MRSN, TO-HP, Herb. Cancellieri), 6 (APP), 7 (MRSN), 8 (Herb. Cancellieri)

***Carex sylvatica* Huds.**

1 (Herb. Cancellieri, Herb. Faraoni, Herb. Gangale & Uzunov, Herb. Salerno 2 es.)

***Carex viridula* Michx.**

9 (PORUN, Herb. Rizzieri Masin)

***Eleocharis quinqueflora* (Hartmann) O.Schwarz**

4,1 (TO-HP)

***Eriophorum angustifolium* Honck. subsp. *angustifolium***

8 (APP), 8,1 (TO-HP, Herb. Gangale & Uzunov)

***Isolepis setacea* (L.) R.Br.**

9 (APP, BI 2 es., GE, HFLA, HLUC, TO-HP 2 es., Herb. Gangale & Uzunov, Herb. Rizzieri Masin, Herb. Salerno, Herb. Tilia)

Poaceae

***Agrostis alpina* Scop.**

3 (TO-HP, HFLA, MSNM, Herb. Gangale & Uzunov)

***Agrostis capillaris* L. subsp. *capillaris***

1 (Herb. Gangale & Uzunov), 2 (TO-HP), 3 (HFLA), 15 (Herb. Gangale & Uzunov), 18 (Herb. Cancellieri)

***Agrostis rupestris* All. subsp. *rupestris***

3 (TO-HP), 3,1 (APP)

***Agrostis stolonifera* L. subsp. *stolonifera***

2 (TO-HP), 12 (Herb. Gangale & Uzunov)

*Anisantha sterilis* (L.) Nevski

[*Bromus sterilis* L.]

18 (TO-HP)

*Anthoxanthum odoratum* L. subsp. *nipponicum* (Honda) Tzvelev

7 (MSNM)

*Anthoxanthum odoratum* L. subsp. *odoratum*

4 (BI), 8 (HLUC), 9 (HLUC)

*Avenella flexuosa* (L.) Drejer subsp. *flexuosa*

[*Deschampsia flexuosa* (L.) Trin. subsp. *flexuosa*]

2 (PORUN, Herb. Cancellieri), 3 (BI, TO-HP, Herb. Cancellieri, Herb. Gangale & Uzunov, Herb. Salerno, Herb. Tilia), 4 (GE, MRSN, Herb. Faraoni), 4,1 (Herb. Salerno), 5 (HLUC), 6 (Herb. Gangale & Uzunov), 8 (APP, HLUC, Herb. Tilia), 13,1 (Herb. Gangale & Uzunov), 17 (HLUC), 18 (Herb. Cancellieri)

Specimens collected have been referred to subsp. *flexuosa*, distributed in France and southern Europe (according to Tison and De Foucault 2014); *A. flexuosa* (L.) Drejer subsp. *corsica* (Tausch) Holub, whose taxonomic validity is to be confirmed (the only distinctive character seems to be the lack of anthocyanin pigments), is probably present only in the island of Corsica (E. Banfi, pers. comm).

*Bellardiochloa variegata* (Lam.) Kerguelen subsp. *variegata*

6 (MSNM), 8 (Herb. Lattanzi), 9 (BI), 12 (MSNM)

*Brachypodium rupestre* (Host) Roem. & Schult.

[*Brachypodium cespitosum* (Host) Roem. & Schult.]

1 (HLUC, MSNM 2 es., TO-HP, Herb. Gangale & Uzunov), 2 (TO-HP), 5 (Herb. Gangale & Uzunov), 15 (TO-HP), 17 (Herb. Cancellieri)

*Briza media* L.

1 (BI, Herb. Salerno, Herb. Tilia), 2 (TO-HP), 3 (BI, Herb. Faraoni, Herb. Salerno), 3,1 (HFLA), 4,1 (Herb. Salerno), 5 (HLUC, MRSN, TO-HP), 8 (TO-HP, Herb. Cancellieri), 13 (Herb. Gangale & Uzunov), 18 (Herb. Cancellieri)

*Bromopsis erecta* (Huds.) Fourr. subsp. *erecta*

[*Bromus erectus* Huds. subsp. *erectus*]

6 (HLUC), 17 (Herb. Gangale & Uzunov, Herb. Salerno)

The specimen collected in site 17 is determined as *Bromus erectus* Huds. subsp. *longiflorus* (Willd. ex Spreng.) Arcang. This taxon is separated by Conti et al. (2005) from the subsp. *erectus*, morphologically distinguishable, reported for central Italy; Tison and De Foucault (2014) consider it a morphological outcome of richness of nitrogen in the soil (E. Banfi, pers. comm.); Bartolucci et al. (2018) don't consider this taxa and synonymize it with *Bromopsis erecta* (Huds.) Fourr. subsp. *erecta*.

*Bromus arvensis* L. subsp. *arvensis*

3 (Herb. Salerno), 17 (Herb. Salerno), 18 (TO-HP)

*Calamagrostis arundinacea* (L.) Roth

3 (HFLA, TO-HP), 8 (HFLA), 12 (HFLA)

*Calamagrostis varia* (Schrad.) Host  
3 (PORUN), 4,1 (MSNM)

*Cynosurus cristatus* L.

1 (Herb. Faraoni), 3 (TO-HP), 4 (BI), 8 (Herb. Salerno), 9 (HLUC, MRSN, TO-HP, Herb. Faraoni, Herb. Gangale & Uzunov)

*Cynosurus echinatus* L.

16 (HLUC, MSNM)

*Dactylis glomerata* L. subsp. *glomerata*

1 (MRSN), 2 (TO-HP), 4 (PORUN, Herb. Faraoni), 5 (Herb. Cancellieri), 12 (TO-HP, Herb. Gangale & Uzunov), 17 (PORUN)

*Danthonia decumbens* (L.) DC. subsp. *decumbens*

8 (TO-HP)

*Deschampsia cespitosa* (L.) P.Beauv. subsp. *cespitosa*

1 (Herb. Cancellieri)

*Drymochloa sylvatica* (Pollich) Holub

[*Festuca altissima* All.]

12 (HFLA)

*Elymus caninus* (L.) L.

2 (TO-HP), 17 (Herb. Cancellieri)

*Festuca arvernensis* Auquier subsp. *costei* (St.-Yves) Auquier & Kerguélen

3 (HFLA, TO-HP, Herb. Cancellieri), 3,1 (HFLA), 4 (PORUN), 5 (Herb. Cancellieri), 6 (Herb. Cancellieri)

*Festuca filiformis* Pourr.

8 (Herb. Cancellieri, Herb. Soldano), 9 (PORUN), 15 (HFLA), 16 (Herb. Bovio)

*Festuca flavescens* Bellardi

2 (MSNM, Herb. Cancellieri), 3 (MSNM), 15 (HFLA, MSNM, PORUN, Herb. Cancellieri, Herb. Gangale & Uzunov), 18 (HFLA, PORUN, Herb. Cancellieri)

*Festuca heterophylla* Lam.

1 (Herb. Salerno), 2 (MSNM)

*Festuca laevigata* Gaudin

[includes *Festuca laevigata* Gaudin subsp. *crassifolia* (Gaudin) Kerguélen & Plonka]

3 (Herb. Cancellieri), 3,1 (HFLA), 4 (HFLA), 5 (Herb. Soldano), 8 (HFLA 2 es., Herb. Cancellieri), 14 (MSNM)

*Festuca nigricans* (Hack.) K.Richt.

6 (Herb. Cancellieri)

*Festuca* cfr. *plonkae* Foggi & Signorini



4,1 (Herb. Gangale & Uzunov)

*Festuca rubra* L. subsp. *commutata* (Gaudin) Markg.-Dannenb.  
1 (HFLA), 2 (TO-HP), 3 (HFLA), 4 (PORUN), 6 (TO-HP), 9 (TO-HP)

*Festuca rubra* L. subsp. *juncea* (Hack.) K.Richt.  
3 (Herb. Cancellieri), 4 (HFLA), 8 (HFLA), 18 (Herb. Cancellieri)

*Festuca trichophylla* (Ducros ex Gaudin) K.Richt. subsp. *trichophylla*  
3 (Herb. Cancellieri)

*Festuca violacea* Ser. ex Gaudin subsp. *violacea*  
4 (PORUN)

*Glyceria fluitans* (L.) R.Br.  
9 (Herb. Salerno)

*Glyceria notata* Chevall.  
8 (Herb. Salerno), 9 (MSNM, TO-HP, Herb. Cancellieri 2 es., Herb. Tilia)

\*\* *Helictochloa praeusta* (Rchb.) Romero Zarco subsp. *pseudoviolacea* (Dalla Torre) H.Scholz  
[*Avenula praeusta* (Rchb.) Holub]

3 (TO-HP), 4,1 (Herb. Salerno)

It seems that the whole alpine population is to be ascribed to this subspecies, while the nominal subspecies would be present only in the Dinaric Alps (E. Banfi, pers. comm.).

*Helictotrichon sedenense* (Clarion ex DC.) Holub subsp. *sedenense*  
4 (HFLA)

*Holcus lanatus* L. subsp. *lanatus*  
9 (Herb. Salerno)

*Holcus mollis* L. subsp. *mollis*  
8 (Herb. Salerno), 13 (MSNM, PORUN)

*Koeleria hirsuta* Gaudin  
3 (HFLA), 3,1 (HFLA), 4,1 (Herb. Soldano), 5 (Herb. Cancellieri, Herb. Gangale & Uzunov), 6 (Herb. Gangale & Uzunov)

*Koeleria pyramidata* (Lam.) P.Beauv.  
3 (HFLA), 4 (PORUN), 4,1 (Herb. Salerno 2 es.), 6 (MSNM)

*Koeleria vallesiana* (Honck.) Gaudin subsp. *vallesiana*  
3 (TO-HP 2 es.), 3,1 (HFLA), 4,1 (MSNM), 5 (Herb. Cancellieri)

*Lolium apenninum* (De Not.) Ardenghi & Foggi  
[*Festuca pratensis* Huds. subsp. *apennina* (De Not.) Hegi]  
3 (MSNM), 18 (PORUN)

*Lolium perenne* L.  
14 (TO-HP)

***Lolium pratense*** (Huds.) Darbysh.  
[*Festuca pratensis* Huds. subsp. *pratensis*]  
2 (TO-HP)

***Melica nutans*** L.  
2 (TO-HP)

\*\* ***Melica transsilvanica*** Schur subsp. ***klokovii*** Tzvelev  
2 (BI 2 es., MSNM, PORUN, Herb. Salerno)  
The former Italian checklists (Conti et al. 2005, 2007) assessed only the presence in Italy of *M. transsilvanica* Schur subsp. *transsilvanica*. According to Hempel (2011), the nominal subspecies would be assessed in northern Italy, while the subsp. *klokovii* would be present in central and southern Italy. Yet, the specimens collected in northern Italy should be referred to the subsp. *klokovii* and the nominal subspecies wouldn't be assessed in Italy. However, the taxonomic validity of these subspecies is to be further investigated (E. Banfi, pers. comm.).

***Melica uniflora*** Retz.  
16 (Herb. Salerno)

***Molinia caerulea*** (L.) Moench  
8,1 (TO-HP)

***Nardus stricta*** L.  
3 (Herb. Salerno), 4 (PORUN), 7 (TO-HP)

***Patzkea paniculata*** (L.) G.H.Loos subsp. ***paniculata***  
[*Festuca paniculata* (L.) Schinz & Thell. subsp. *paniculata*]  
8 (HFLA, Herb. Gangale & Uzunov, Herb. Rizzieri Masin)

***Phalaris arundinacea*** L. subsp. ***arundinacea***  
2 (PORUN, Herb. Salerno)

***Phleum alpinum*** L.  
[*Phleum bertolonii* DC.]  
3 (TO-HP), 4 (Herb. Faraoni), 5 (TO-HP), 6 (MSNM), 18 (HFLA)

***Phleum nodosum*** L.  
16 (MSNM)

***Phleum pratense*** L. subsp. ***pratense***  
18 (Herb. Cancellieri)

***Phleum rhaeticum*** (Humphries) Rauschert  
4 (PORUN), 6 (Herb. Cancellieri, Herb. Gangale & Uzunov), 18 (Herb. Gangale & Uzunov)

***Poa alpina*** L. subsp. ***alpina***  
3 (TO-HP), 3,1 (HFLA), 4 (Herb. Cancellieri), 5 (Herb. Cancellieri), 7 (Herb. Cancellieri), 18 (Herb. Cancellieri)

***Poa angustifolia*** L.

5 (Herb. Cancellieri)

***Poa compressa* L.**

18 (TO-HP)

***Poa nemoralis* L. subsp. *glaucantha* (Gaudin) Banfi**

2 (HFLA)

The existence of the subsp. *glaucantha* (wrongly considered synonym of *Poa glauca* Vahl in some literature - E. Banfi, pers. comm.) has been taken into consideration only recently and wasn't reported in Conti et al. (2005, 2007).

***Poa nemoralis* L. subsp. *nemoralis***

1 (GE, MRSN, Herb. Cancellieri, Herb. Gangale & Uzunov, Herb. Salerno, Herb. Tilia), 2 (PORUN, TO-HP), 3 (Herb. Gangale & Uzunov), 4 (PORUN, Herb. Rizzieri Masin), 6 (TO-HP), 12 (Herb. Cancellieri), 13 (TO-HP), 13,1 (TO-HP, Herb. Gangale & Uzunov), 14 (Herb. Rizzieri Masin), 15 (HFLA, TO-HP, Herb. Cancellieri)

***Poa palustris* L. subsp. *palustris***

9 (Herb. Gangale & Uzunov)

***Poa trivialis* L.**

3 (TO-HP), 6 (MSNM), 9 (TO-HP), 15 (TO-HP), 18 (TO-HP)

***Sesleria caerulea* (L.) Ard. subsp. *caerulea***

3 (HFLA, TO-HP), 4,1 (Herb. Salerno), 5 (Herb. Salerno), 18 (HLUC, Herb. Gangale & Uzunov 2 es., Herb. Salerno)

***Trisetaria flavescens* (L.) Baumg. subsp. *flavescens***

1 (Herb. Salerno), 3 (Herb. Cancellieri, Herb. Salerno), 8 (MSNM, TO-HP), 9 (BI), 12 (Herb. Cancellieri), 13 (PORUN, Herb. Gangale & Uzunov), 18 (Herb. Cancellieri 2 es.)

**Eudicots**

**Papaveraceae**

A NAT ***Papaver argemone* L. subsp. *argemone***

14 (BI, GE, HLUC, TO-HP, Herb. Cancellieri, Herb. Faraoni, Herb. Gangale & Uzunov, Herb. Lattanzi, Herb. Tilia)

**Ranunculaceae**

***Aconitum burnatii* Gáyer subsp. *burnatii***

4 (PORUN), 15 (APP, HFLA, TO-HP), 18 (TO-HP)

***Aconitum lycoctonum* L. emend. Koelle**

5 (Herb. Gangale & Uzunov), 17 (BI, HLUC), 18 (Herb. Gangale & Uzunov, PORUN)

***Actaea spicata* L.**

2 (TO-HP)

***Anemonastrum narcissiflorum* (L.) Holub subsp. *narcissiflorum***

[*Anemone narcissiflora* L. subsp. *narcissiflora*]

3 (Herb. Rizzieri Masin), 6 (HLUC, MRSN, MSNM, TO-HP, Herb. Faraoni), 7 (Herb. Salerno)

***Aquilegia alpina* L.**

4 (no *exsiccatum* photo by Stinca), 5 (no *exsiccatum* photo by Rosati), 6 (GE), 7 (APP)

***Aquilegia atrata* W.D.J.Koch**

1 (APP)

***Caltha palustris* L.**

1 (Herb. Gangale & Uzunov), 2 (TO-HP), 3,1 (HFLA), 4 (PORUN), 7 (TO-HP), 12 (Herb. Salerno)

***Clematis alpina* (L.) Mill.**

3 (TO-HP), 4 (Herb. Soldano), 18 (Herb. Salerno)

***Clematis vitalba* L.**

2 (TO-HP)

***Delphinium dubium* (Rouy & Foucaud) Pawl.**

4 (PORUN), 5 (Herb. Soldano), 6 (APP 3 es., HLUC)

*D. dubium* and *D. elatum* L. subsp. *helveticum* Pawl. are not easily distinguishable and their distinctive characters are in contrast in different floras. We decided to follow the most up-to-date floras available for the alpine area (Aeschimann et al. 2004, Tison and De Foucault 2014).

***Hepatica nobilis* Mill.**

1 (MRSN, Herb. Gangale & Uzunov), 3 (MRSN, Herb. Salerno), 16 (TO-HP), 18 (Herb. Salerno)

e ***Pulsatilla alpina* (L.) Delarbre subsp. *cottianaea* (Beauverd) D.M.Moser**

4 (BI, PORUN), 4,1 (Herb. Tilia), 6 (APP 2 es., HLUC, MSNM, Herb. Faraoni, Herb. Gangale & Uzunov), 7 (MRSN)

***Ranunculus aconitifolius* L.**

3 (HFLA, Herb. Cancellieri), 6 (APP 2 es.), 6,1 (Herb. Gangale & Uzunov)

***Ranunculus acris* L. subsp. *acris***

1 (APP, HFLA 2 es., Herb. Gangale & Uzunov), 5 (APP), 8,1 (Herb. Gangale & Uzunov), 9 (Herb. Faraoni), 13 (Herb. Gangale & Uzunov), 18 (TO-HP, Herb. Gangale & Uzunov)

***Ranunculus bulbosus* L.**

3,1 (HFLA), 5 (Herb. Gangale & Uzunov)

***Ranunculus platanifolius* L.**

3 (TO-HP), 5 (Herb. Cancellieri), 6 (APP), 18 (TO-HP, Herb. Cancellieri)

***Ranunculus tuberosus* Lapeyr.**

[*Ranunculus serpens* Schrank, *Ranunculus serpens* Schrank subsp. *nemorosus* (DC.) G.López]  
3 (HFLA, TO-HP, Herb. Bovio, Herb. Cancellieri), 5 (Herb. Gangale & Uzunov 2 es.)

***Ranunculus villarsii* DC.**

3 (TO-HP), 5 (TO-HP), 18 (Herb. Cancellieri, Herb. Faraoni)

***Thalictrum minus* L. subsp. *minus***

3 (BI, HFLA, MRSN, Herb. Cancellieri, Herb. Faraoni, Herb. Gangale & Uzunov), 4 (BI, PORUN, Herb. Rizzieri Masin 2 es.), 4,1 (Herb. Gangale & Uzunov, Herb. Soldano), 7 (Herb. Salerno)

***Trollius europaeus* L. subsp. *europaeus***

1 (HFLA), 18 (HFLA)

**Superrosids**  
**Saxifragaceae**

***Micranthes engleri* (Dalla Torre) Galasso, Banfi & Soldano**

[*Saxifraga stellaris* L. subsp. *engleri* P. Fourn.]

4 (PORUN), 4,1 (Herb. Tilia), 6 (APP, HLUC), 7 (MRSN, TO-HP, Herb. Cancellieri), 8,1 (Herb. Gangale & Uzunov), 9 (APP, HLUC, PORUN, TO-HP, Herb. Cancellieri, Herb. Faraoni, Herb. Gangale & Uzunov, Herb. Salerno, Herb. Tilia)

***Saxifraga aizoides* L.**

4,1 (Herb. Salerno, Herb. Tilia), 6 (Herb. Faraoni), 7 (HLUC), 18 (PORUN)

***Saxifraga aspera* L.**

7 (Herb. Salerno), 8 (APP), 9 (GE, HLUC), 15 (APP, MSNM, Herb. Salerno), 16 (HFLA)

***Saxifraga caesia* L.**

3,1 (HFLA), 4 (Herb. Soldano)

**\*\* *Saxifraga cuneifolia* L. subsp. *robusta* D.A. Webb**

2 (APP, MRSN)

***Saxifraga diapsioides* Bellardi**

4,1 (Herb. Gangale & Uzunov)

***Saxifraga exarata* Vill. subsp. *exarata***

3,1 (HFLA), 4 (BI, PORUN), 4,1 (Herb. Salerno, Herb. Tilia), 5 (GE, HLUC, MRSN 2 es., Herb. Cancellieri, Herb. Salerno), 6 (APP, MSNM, TO-HP, Herb. Cancellieri, Herb. Faraoni)

***Saxifraga paniculata* Mill.**

5 (MRSN, Herb. Gangale & Uzunov), 6 (APP), 18 (TO-HP)

***Saxifraga rotundifolia* L. subsp. *rotundifolia***

1 (APP), 3 (BI, MRSN), 5 (HLUC)

Crassulaceae

***Hylotelephium anacampseros* (L.) H. Ohba**

3 (HFLA, MRSN, MSNM, PORUN, Herb. Gangale & Uzunov, Herb. Rizzieri Masin, Herb. Tilia 2 es.), 4 (HLUC, Herb. Rizzieri Masin)

***Hylotelephium maximum* (L.) Holub subsp. *maximum***

2 (HLUC, MRSN, PORUN)

***Petrosedum montanum* (Sondeur & E.P. Perrier) Grulich**

[*Sedum montanum* E.P. Perrier & Sondeur subsp. *montanum*]

2 (Herb. Rizzieri Masin), 4 (Herb. Soldano), 8 (MRSN)

***Rhodiola rosea* L.**

4 (BI, PORUN, Herb. Rizzieri Masin), 5 (Herb. Salerno), 6 (HLUC), 6,1 (Herb. Gangale & Uzunov), 7 (MRSN, Herb. Cancellieri, Herb. Faraoni)

***Sedum acre* L.**

1 (APP, PORUN), 4,1 (Herb. Gangale & Uzunov), 5 (MRSN, TO-HP), 8 (HLUC)

***Sedum album* L. subsp. *album***

1 (TO-HP), 2 (MRSN, Herb. Gangale & Uzunov), 17 (HLUC)

***Sedum alpestre* Vill.**

3 (HFLA), 5 (MRSN), 7 (APP), 8 (BI, Herb. Rizzieri Masin 2 es.), 16 (HFLA)

**E *Sedum alsinifolium* All.**

6 (MSNM), 15 (APP, GE, MRSN, MSNM, Herb. Bovio, Herb. Gangale & Uzunov, Herb. Salerno, Herb. Soldano)

***Sedum annuum* L.**

1 (APP, Herb. Tilia), 2 (APP, TO-HP), 4 (MSNM), 4,1 (Herb. Tilia), 8 (TO-HP, Herb. Gangale & Uzunov, Herb. Salerno), 15 (no *exsiccatum* photo by Rosati)

***Sedum atratum* L. subsp. *atratum***

4 (PORUN)

***Sedum dasyphyllum* L. subsp. *dasyphyllum***

4,1 (Herb. Gangale & Uzunov), 15 (MRSN, Herb. Gangale & Uzunov)

***Sempervivum alpinum* Griseb. & Schenk**

5 (MRSN)

***Sempervivum arachnoideum* L.**

1 (HLUC), 2 (BI, PORUN), 5 (Herb. Gangale & Uzunov), 8 (BI, HLUC, MRSN, TO-HP)

***Sempervivum montanum* L. subsp. *burnatii* Wettst. ex Hayek**

3 (HFLA, MRSN), 4 (MRSN, PORUN), 5 (APP, no *exsiccatum* photo by Rosati), 8 (Herb. Lattanzi)

***Umbilicus rupestris* (Salisb.) Dandy**

2 (MRSN, TO-HP, Herb. Gangale & Uzunov)

**Rosids**

**Fabaceae**

***Anthyllis vulneraria* L. subsp. *polyphylla* (DC.) Nyman**

18 (HFLA)

***Anthyllis vulneraria* L. subsp. *vulnerarioides* (All.) Arcang.**

3,1 (HFLA, TO-HP), 4 (PORUN 2 es., Herb. Rizzieri Masin 2 es.), 4,1 (MSNM 2 es., Herb. Gangale & Uzunov), 5 (APP, MRSN, TO-HP, Herb. Gangale & Uzunov), 7 (HLUC)

All the morphological characters of these specimens lead to *A. vulneraria* L. subsp. *vulnerarioides*, except for the calix length, that is 9.5-12 mm long in all the specimens, instead of 8-9 mm (according to Pignatti 1982) or 7-10 mm (according to Cullen 1976).

***Astragalus glycyphyllos* L.**

16 (HLUC, PORUN), 18 (TO-HP)

***Astragalus monspessulanus* L. subsp. *monspessulanus***

5 (Herb. Gangale & Uzunov)

***Cytisus hirsutus* L.**

2 (HFLA), 8 (APP, GE, MRSN, MSNM, PORUN, TO-HP, Herb. Cancellieri, Herb. Faraoni, Herb. Gangale & Uzunov, Herb. Salerno), 14 (Herb. Lattanzi), 15 (Herb. Salerno), 16 (APP, HLUC, PORUN, Herb. Gangale & Uzunov)

This species is intended *sensu* Cristofolini and Troia (2006), Tison and De Foucault (2014) and The Euro+Med PlantBase, that consider *C. hirsutus* synonym of *C. supinus*. Aeschimann et al. (2004) and Bartolucci et al. (2018) keep these two taxa separated (A. Soldano, pers. comm.).

***Cytisus nigricans* L. subsp. *nigricans***

2 (APP, HFLA)

***Cytisus scoparius* (L.) Link subsp. *scoparius***

8 (TO-HP), 16 (TO-HP)

***Ervilia hirsuta* (L.) Opiz**

[*Vicia hirsuta* (L.) Gray]

15 (BI 2 es., MRSN, TO-HP)

***Genista germanica* L.**

2 (APP, HFLA), 3 (HFLA, HLUC, PORUN, Herb. Gangale & Uzunov, Herb. Salerno, Herb. Tilia), 4 (PORUN, Herb. Faraoni), 5 (Herb. Gangale & Uzunov), 8 (BI, GE, PORUN, Herb. Cancellieri, Herb. Faraoni, Herb. Salerno, Herb. Tilia), 13,1 (Herb. Gangale & Uzunov), 18 (Herb. Salerno)

***Genista tinctoria* L.**

2 (HFLA), 3 (MRSN, Herb. Salerno, Herb. Tilia), 4 (Herb. Lattanzi), 8 (BI, GE, HFLA, HLUC, MRSN, PORUN, Herb. Gangale & Uzunov), 16 (APP)

***Hippocrepis comosa* L. subsp. *comosa***

3 (GE, TO-HP, Herb. Cancellieri, Herb. Gangale & Uzunov, Herb. Salerno)

***Laburnum alpinum* (Mill.) Bercht. & J.Presl**

1 (MRSN), 2 (HLUC, TO-HP), 8 (APP, BI, HLUC, MRSN, PORUN, Herb. Salerno), 13,1 (HFLA, Herb. Gangale & Uzunov), 18 (TO-HP)

***Lathyrus linifolius* (Reichard) Bässler**

1 (Herb. Faraoni), 13,1 (Herb. Tilia), 15 (Herb. Cancellieri)

***Lathyrus pratensis* L. subsp. *pratensis***

4,1 (Herb. Salerno), 5 (HLUC, Herb. Gangale & Uzunov), 7 (Herb. Salerno), 12 (Herb. Faraoni), 13 (TO-HP)

***Lathyrus sylvestris*** L. subsp. *sylvestris*  
2 (HLUC, Herb. Gangale & Uzunov), 16 (APP)

***Lotus corniculatus*** L. subsp. *alpinus* (DC.) Rothm.  
3 (TO-HP), 4 (BI), 6 (TO-HP), 7 (MRSN), 8 (PORUN)

***Lotus corniculatus*** L. subsp. *corniculatus*  
1 (TO-HP), 2 (HFLA), 8 (Herb. Gangale & Uzunov 2 es.), 8,1 (Herb. Gangale & Uzunov), 15 (TO-HP)

***Medicago lupulina*** L.  
5 (TO-HP)

***Onobrychis montana*** DC. subsp. *montana*  
4 (Herb. Lattanzi, Herb. Rizzieri Masin), 4,1 (MSNM, Herb. Salerno, Herb. Tilia), 5 (APP 2 es., Herb. Gangale & Uzunov)

***Onobrychis viciifolia*** Scop.  
5 (HLUC, MRSN, Herb. Cancellieri, Herb. Faraoni), 17 (Herb. Salerno)

***Ononis spinosa*** L. subsp. *procurrens* (Wallr.) Briq.  
[*Ononis spinosa* L. subsp. *maritima* (Dumort.) P. Fourn.]  
16 (APP, HLUC, MSNM, PORUN, TO-HP 2 es.)

A INV ***Robinia pseudacacia*** L.  
2 (TO-HP)

***Trifolium alpestre*** L.  
5 (APP, Herb. Gangale & Uzunov), 6 (HLUC), 12 (Herb. Cancellieri, Herb. Faraoni, Herb. Salerno), 13 (HLUC, PORUN), 13,1 (Herb. Tilia)

***Trifolium alpinum*** L.  
3 (TO-HP), 4 (PORUN), 4,1 (Herb. Salerno), 5 (APP), 6 (APP, HLUC, MRSN, TO-HP, Herb. Cancellieri, Herb. Faraoni, Herb. Gangale & Uzunov), 8 (HFLA, Herb. Cancellieri, Herb. Tilia)

***Trifolium arvense*** L. subsp. *arvense*  
15 (Herb. Salerno)

***Trifolium aureum*** Pollich subsp. *aureum*  
1 (APP, HFLA), 2 (BI, HLUC, 2 es., Herb. Cancellieri, Herb. Faraoni, Herb. Gangale & Uzunov), 8 (HLUC, Herb. Tilia), 9 (Herb. Gangale & Uzunov), 12 (TO-HP), 14 (Herb. Lattanzi), 15 (Herb. Tilia)

***Trifolium badium*** Schreb.  
4 (PORUN), 5 (HLUC, Herb. Gangale & Uzunov), 6 (TO-HP, Herb. Gangale & Uzunov), 8 (HFLA, MRSN, Herb. Cancellieri, Herb. Faraoni), 18 (TO-HP, Herb. Cancellieri, Herb. Faraoni)

***Trifolium campestre*** Schreb.  
2 (MSNM), 8 (GE)

***Trifolium montanum*** L. subsp. *montanum*



1 (MRSN, Herb. Faraoni), 18 (HFLA, Herb. Cancellieri)

***Trifolium montanum*** L. subsp. ***rupestre*** (Ten.) Nyman  
3 (Herb. Salerno, Herb. Tilia), 5 (APP)

***Trifolium ochroleucom*** Huds.  
4 (HLUC), 6 (APP)

***Trifolium pallescens*** Schreb.  
8 (TO-HP), 17 (TO-HP)

***Trifolium pannonicum*** Jacq. subsp. ***pannonicum***  
8 (APP), 12 (TO-HP, Herb. Cancellieri, Herb. Gangale & Uzunov), 13,1 (APP)

***Trifolium pratense*** L. subsp. ***nivale*** Ces.  
3 (Herb. Gangale & Uzunov), 6 (MSNM, MRSN), 8 (MRSN), 12 (Herb. Gangale & Uzunov), 17 (TO-HP), 20 (MSNM)

***Trifolium pratense*** L. subsp. ***pratense***  
3 (Herb. Faraoni), 4,1 (Herb. Salerno), 5 (Herb. Faraoni), 8 (Herb. Cancellieri)

***Trifolium repens*** L.  
5 (MRSN), 12 (Herb. Gangale & Uzunov)

***Trifolium thalii*** Vill.  
6 (MRSN)

***Trigonella alba*** (Medik.) Coulot & Rabaute  
[*Melilotus albus* Medik.]  
2 (Herb. Faraoni), 16 (TO-HP)

***Vicia angustifolia*** L.  
[*Vicia sativa* L. subsp. *nigra* (L.) Ehrh.]  
15 (Herb. Cancellieri)

***Vicia cracca*** L.  
15 (TO-HP), 17 (Herb. Faraoni)

***Vicia sepium*** L.  
1 (Herb. Gangale & Uzunov, Herb. Salerno), 2 (TO-HP), 4 (Herb. Rizzieri Masin), 18 (Herb. Faraoni)

#### Polygalaceae

***Polygala alpestris*** Rchb. subsp. ***alpestris***  
3 (HFLA), 5 (APP, MRSN, TO-HP, Herb. Cancellieri), 6 (HLUC, TO-HP), 8 (TO-HP), 12 (PORUN), 17 (Herb. Gangale & Uzunov), 18 (Herb. Faraoni), 20 (MSNM)

***Polygala serpyllifolia*** Hosé  
8 (APP), 8,1 (Herb. Gangale & Uzunov)

***Polygala vulgaris*** L. subsp. ***vulgaris***  
5 (APP), 8 (MSNM)

Rosaceae

***Agrimonia eupatoria*** L. subsp. ***eupatoria***  
[includes *Agrimonia eupatoria* L. subsp. *grandis* (Andrz.ex Asch. & Graebn.) Bornm.]  
16 (APP)

This specimen has been determined as *A. eupatoria* L. subsp. *grandis*, but in Bartolucci et al. (2018), according to main European floras, this subspecies is included in *A. eupatoria* L. subsp. *eupatoria*, the only taxa considered present in Italy.

***Alchemilla alpigena*** Buser ex Hegi  
3 (MRSN, MSNM, Herb. Faraoni), 9 (Herb. Soldano)

(\*\*) ***Alchemilla*** cfr. ***chirophylla*** Buser  
18 (TO-HP)

***Alchemilla colorata*** Buser  
4,1 (Herb. Soldano)

***Alchemilla connivens*** Buser  
1 (TO-HP)

***Alchemilla effusa*** Buser  
1 (APP)

***Alchemilla exigua*** Buser ex Paulin  
3 (PORUN), 4,1 (Herb. Soldano), 18 (TO-HP)

***Alchemilla fissa*** Gunther & Schummel  
3 (MRSN)

***Alchemilla flabellata*** Buser  
3 (HFLA), 4,1 (Herb. Soldano), 18 (TO-HP)

***Alchemilla glabra*** Neygenf.  
1 (APP, GE, HFLA), 3 (HFLA), 3,1 (HFLA 2 es.), 4,1 (Herb. Soldano), 9 (GE), 13 (TO-HP), 18 (TO-HP)

***Alchemilla*** cfr. ***incisa*** Buser  
3 (MRSN), 18 (HFLA)

***Alchemilla pallens*** Buser  
6 (TO-HP), 18 (TO-HP)

***Alchemilla reniformis*** Buser  
1 (Herb. Cancellieri), 3 (HFLA, MRSN, Herb. Faraoni)

***Alchemilla saxatilis*** Buser

2 (BI, GE, HLUC, MRSN, MSNM, PORUN, Herb. Gangale & Uzunov), 3 (HLUC, TO-HP, Herb. Faraoni, Herb. Tilia 2 es.), 4 (Herb. Faraoni), 4,1 (Herb. Soldano), 8 (BI, PORUN, TO-HP, Herb. Gangale & Uzunov, Herb. Soldano), 9 (GE, HLUC), 18 (HFLA)

***Alchemilla strigosula*** Buser

1 (HFLA)

***Alchemilla subcrenata*** Buser

1 (MRSN, TO-HP, Herb. Tilia), 3 (MRSN, Herb. Salerno)

***Alchemilla subsericea*** Reut.

3 (Herb. Gangale & Uzunov), 7 (MRSN), 18 (TO-HP)

***Alchemilla tenerrima*** S.E.Fröhner

18 (HFLA)

***Alchemilla transiens*** (Buser) Buser

3 (BI)

This specimen has been determined as *A. subtruncata* Buser by the genus specialist S.E. Frohner, having characteristically large and obovate leaves. Frohner (2002) considers this taxon falling within the variability of *A. transiens* and Buser named it *A. transiens* f. *latifolia*. The issue of taxonomic acknowledgment of these entities and of the existence of local endemics taxa of the genus *Alchemilla* has not yet been solved, but if *A. subtruncata* had its own systematic autonomy, it would probably be a narrow endemism of the Western Alps (F. Festi, pers. comm.).

E ***Alchemilla vaccariana*** Buser

3 (HFLA), 8 (HFLA)

***Alchemilla vetteri*** Buser

3 (MRSN)

***Alchemilla xanthochlora*** Rothm.

1 (APP), 3 (MRSN, Herb. Tilia)

***Amelanchier ovalis*** Medik. subsp. *ovalis*

2 (TO-HP, Herb. Salerno), 8 (BI, PORUN, TO-HP, Herb. Tilia)

***Aruncus dioicus*** (Walter) Fernald

1 (HFLA), 18 (TO-HP, Herb. Gangale & Uzunov)

***Dryas octopetala*** L. subsp. *octopetala*

3 (TO-HP), 3,1 (HFLA), 4,1 (Herb. Gangale & Uzunov), 18 (HLUC, PORUN, Herb. Cancellieri, Herb. Salerno)

***Filipendula ulmaria*** (L.) Maxim.

1 (TO-HP)

***Fragaria vesca*** L. subsp. *vesca*

1 (MRSN), 15 (TO-HP), 17 (TO-HP)

***Geum montanum*** L.

3 (Herb. Salerno), 4 (PORUN), 4,1 (Herb. Salerno), 6 (APP, HLUC), 7 (MRSN, Herb. Faraoni)

***Geum rivale* L.**

1 (HLUC, MRSN, Herb. Cancellieri, Herb. Gangale & Uzunov, Herb. Rizzieri Masin, Herb. Tilia), 4 (PORUN), 6 (TO-HP, Herb. Faraoni), 7 (Herb. Salerno), 18 (Herb. Cancellieri, Herb. Gangale & Uzunov)

***Geum urbanum* L.**

1 (HLUC, MRSN, TO-HP, Herb. Faraoni), 15 (TO-HP)

***Potentilla argentea* L.**

14 (MSNM, Herb. Cancellieri, Herb. Rizzieri Masin 2 es., Herb. Tilia), 15 (APP, MRSN, TO-HP)

***Potentilla caulescens* L. subsp. *caulescens***

4,1 (Herb. Gangale & Uzunov, Herb. Soldano)

***Potentilla erecta* (L.) Raeusch.**

1 (MRSN, Herb. Cancellieri, Herb. Faraoni, Herb. Gangale & Uzunov, Herb. Tilia), 3 (TO-HP), 4 (PORUN), 8 (HLUC), 8,1 (Herb. Gangale & Uzunov), 9 (HLUC, Herb. Tilia), 12 (Herb. Salerno), 13 (HLUC, TO-HP, Herb. Cancellieri, Herb. Gangale & Uzunov), 18 (HFLA, Herb. Cancellieri)

***Potentilla grandiflora* L.**

3 (HFLA, MSNM, TO-HP), 4 (MRSN, Herb. Rizzieri Masin), 5 (APP, Herb. Gangale & Uzunov, Herb. Soldano), 6,1 (Herb. Gangale & Uzunov), 7 (Herb. Salerno), 16 (HFLA), 18 ((TO-HP, Herb. Cancellieri)

***Poterium sanguisorba* L. subsp. *sanguisorba***

[*Sanguisorba minor* Scop. subsp. *minor*]

5 (TO-HP)

***Prunus avium* (L.) L.**

16 (Herb. Salerno)

***Rosa caesia* Sm.**

18 (Herb. Lattanzi)

***Rosa canina* L.**

2 (Herb. Lattanzi), 8 (Herb. Lattanzi), 14 (Herb. Lattanzi)

***Rosa corymbifera* Borkh.**

8 (Herb. Lattanzi), 9 (Herb. Lattanzi)

***Rosa dumalis* Bechst.**

1 (Herb. Lattanzi), 8 (APP, Herb. Lattanzi), 9 (Herb. Lattanzi)

**\*\* *Rosa mollis* Sm.**

[included in *Rosa villosa* L.]

8 (MSNM), 9 (GE, HFLA, MSNM)

***Rosa* cfr. *mollis* Sm.**

[included in *Rosa villosa* L.]

4 (Herb. Soldano)

***Rosa pendulina* L.**

3 (HFLA), 5 (HLUC), 6 (APP), 7 (HLUC), 17 (HLUC), 18 (Herb. Salerno)

***Rosa subcanina* (Christ) Vuk.**

1 (Herb. Lattanzi), 8 (HFLA, MSNM, Herb. Lattanzi)

***Rosa subcollina* (Christ) Vuk.**

8 (Herb. Lattanzi), 9 (GE), 18 (Herb. Lattanzi)

***Rosa villosa* L.**

2 (Herb. Lattanzi), 3 (Herb. Lattanzi), 9 (Herb. Lattanzi), 18 (Herb. Lattanzi)

***Rubus caesius* L.**

14 (Herb. Lattanzi)

***Rubus idaeus* L. subsp. *idaeus***

1 (HLUC, MRSN), 3 (MRSN, TO-HP), 8 (TO-HP), 18 (TO-HP)

***Rubus ulmifolius* Schott**

2 (APP)

***Sanguisorba officinalis* L.**

4,1 (Herb. Salerno)

***Sorbus aria* (L.) Crantz subsp. *aria***

5 (TO-HP), 8 (BI, TO-HP), 12 (PORUN), 13,1 (APP)

***Sorbus aucuparia* L. subsp. *aucuparia***

1 (MRSN), 2 (TO-HP), 3 (TO-HP), 8 (TO-HP), 9 (TO-HP), 16 (TO-HP)

Rhamnaceae

***Oreoherzogia alpina* (L.) W.Vent**

[*Rhamnus alpina* L. subsp. *alpina*]

18 (Herb. Cancellieri, Herb. Salerno)

Ulmaceae

***Ulmus glabra* Huds.**

1 (TO-HP), 15 (TO-HP)

Cannabaceae

***Humulus lupulus* L.**

2 (HLUC)

Urticaceae

***Parietaria officinalis* L.**

2 (PORUN, TO-HP, Herb. Salerno)

*Urtica dioica* L. subsp. *dioica*

3 (TO-HP), 9 (TO-HP)

*Urtica dioica* L. cfr. subsp. *pubescens* (Ledeb.) Domin

1 (TO-HP)

#### Fagaceae

*Castanea sativa* Mill.

2 (MRSN), 16 (TO-HP)

*Fagus sylvatica* L. subsp. *sylvatica*

1 (BI, MRSN, Herb. Gangale & Uzunov, Herb. Salerno)

*Quercus petraea* (Matt.) Liebl. subsp. *petraea*

1 (HLUC, PORUN, TO-HP, Herb. Salerno), 3,1 (HFLA)

#### Betulaceae

*Alnus alnobetula* (Ehrh.) K.Koch

[*Alnus viridis* (Chaix) DC. subsp. *viridis*]

3 (HFLA, MRSN, PORUN, Herb. Faraoni, Herb. Salerno), 4 (HLUC), 9 (TO-HP), 18 (HFLA, TO-HP, Herb. Gangale & Uzunov)

*Betula pendula* Roth

4 (PORUN), 8 (TO-HP, Herb. Salerno), 9 (PORUN, TO-HP)

*Corylus avellana* L.

1 (HLUC, MRSN), 2 (MRSN), 8 (TO-HP), 12 (TO-HP), 15 (Herb. Gangale & Uzunov), 16 (TO-HP, Herb. Salerno)

#### Celastraceae

*Euonymus europaeus* L.

2 (HLUC, MRSN)

*Parnassia palustris* L. subsp. *palustris*

3 (Herb. Salerno), 4,1 (Herb. Salerno), 17 (PORUN), 18 (TO-HP)

#### Oxalidaceae

*Oxalis acetosella* L.

1 (PORUN, Herb. Salerno, Herb. Tilia), 3 (PORUN, TO-HP, Herb. Salerno), 15 (PORUN), 16 (PORUN), 18 (PORUN)

*Oxalis corniculata* L.

14,1 (PORUN)

A NAT *Oxalis stricta* L.

1 (TO-HP)

## Hypericaceae

***Hypericum* cfr. x *desetangsii* Lamotte (hybrid)**

1 (TO-HP, Herb. Soldano)

***Hypericum humifusum* L.**

14 (Herb. Lattanzi), 15 (APP, BI, GE, HFLA, HLUC, MRSN, MSNM, PORUN, TO-HP 2 es., Herb. Cancellieri, Herb. Faraoni, Herb. Gangale & Uzunov, Herb. Salerno, Herb. Tilia)

***Hypericum montanum* L.**

3 (Herb. Gangale & Uzunov), 18 (HFLA)

***Hypericum perforatum* L. subsp. *perforatum***

1 (APP, MRSN, Herb. Tilia), 2 (HFLA), 8 (HLUC, TO-HP), 9 (BI), 13 (TO-HP, Herb. Gangale & Uzunov)

***Hypericum richeri* Vill. subsp. *richeri***

3 (BI, HFLA, HLUC, MRSN, PORUN, Herb. Cancellieri, Herb. Faraoni, Herb. Salerno, Herb. Tilia), 4 (MRSN), 4,1 (Herb. Salerno), 5 (APP, TO-HP), 7 (Herb. Salerno), 8 (Herb. Cancellieri)

## Violaceae

***Viola arvensis* Murray subsp. *arvensis***

4,1 (Herb. Salerno), 8 (Herb. Salerno)

***Viola biflora* L.**

1 (APP, BI, Herb. Salerno), 3,1 (HFLA), 4 (PORUN), 5 (MRSN, Herb. Salerno), 6 (APP, HLUC, MRSN, TO-HP, Herb. Cancellieri, Herb. Faraoni, Herb. Gangale & Uzunov)

***Viola calcarata* L. *s.l.***

5 (MRSN), 6 (TO-HP)

***Viola canina* L. subsp. *canina***

4 (GE), 9 (APP, HFLA, HLUC), 18 (APP)

***Viola cavillieri* W.Becker**

5 (APP), 6 (MSNM, Herb. Faraoni), 7 (GE)

***Viola palustris* L.**

8 (APP), 12 (Herb. Salerno), 13 (Herb. Cancellieri)

***Viola reichenbachiana* Jord. ex Boreau**

3 (Herb. Gangale & Uzunov), 5 (MRSN)

***Viola tricolor* L. *s.l.***

16 (HLUC)

***Viola tricolor* L. subsp. *saxatilis* (F.W.Schmidt) Jan**

3,1 (HFLA), 4,1 (Herb. Cancellieri), 5 (Herb. Faraoni), 8 (APP, GE, MRSN), 12 (PORUN, Herb. Gangale & Uzunov)

*Viola tricolor* L. subsp. *tricolor*  
1 (APP), 5 (HLUC), 9 (HLUC)

#### Salicaceae

*Populus canescens* (Aiton) Sm.  
1 (MRSN)

*Populus tremula* L.  
1 (Herb. Salerno), 2 (PORUN)

*Salix appendiculata* Vill.  
1 (Herb. Rizzieri Masin), 3 (HFLA), 4 (PORUN, TO-HP), 5 (MRSN, TO-HP), 16 (HLUC), 18 (TO-HP, Herb. Salerno)

*Salix caprea* L.  
12 (TO-HP), 17 (TO-HP)

*Salix foetida* Schleich. ex DC.  
18 (TO-HP)

*Salix hastata* L.  
3 (TO-HP), 4 (Herb. Soldano), 18 (Herb. Gangale & Uzunov)

*Salix herbacea* L.  
7 (MRSN, Herb. Salerno)

*Salix serpyllifolia* Scop.  
3,1 (HFLA)

\*\* *Salix waldsteiniana* Willd.  
3 (TO-HP)

#### Euphorbiaceae

*Euphorbia dulcis* L.  
1 (HLUC, Herb. Gangale & Uzunov), 3 (Herb. Rizzieri Masin, Herb. Salerno), 5 (APP, Herb. Gangale & Uzunov), 15 (MRSN), 18 (PORUN, TO-HP, Herb. Cancellieri, Herb. Faraoni, Herb. Gangale & Uzunov, Herb. Salerno)

#### Linaceae

*Linum alpinum* Jacq.  
3 (TO-HP), 4 (BI, GE, Herb. Rizzieri Masin), 4,1 (Herb. Gangale & Uzunov), 6 (APP 2 es., HLUC, MRSN, MSNM, Herb. Faraoni, Herb. Gangale & Uzunov)

*Linum catharticum* L. *s.l.*  
18 (Herb. Salerno)



***Linum catharticum*** L. subsp. ***catharticum***

4 (TO-HP), 4,1 (Herb. Tilia), 5 (Herb. Cancellieri, Herb. Gangale & Uzunov)

***Linum suffruticosum*** L. subsp. ***appressum*** (Caball.) Rivas Mart.

3 (TO-HP), 3,1 (HFLA, Herb. Bovio), 4 (PORUN), 4,1 (MSNM, Herb. Gangale & Uzunov, Herb. Soldano, Herb. Tilia), 5 (GE, MRSN, Herb. Cancellieri, Herb. Faraoni), 13,1 (Herb. Rizzieri Masin)

***Linum tenuifolium*** L.

3,1 (APP), 4,1 (Herb. Salerno)

Geraniaceae

***Geranium nodosum*** L.

1 (TO-HP, Herb. Faraoni, Herb. Gangale & Uzunov, Herb. Rizzieri Masin, Herb. Tilia), 2 (HFLA, TO-HP), 8 (HLUC), 16 (Herb. Gangale & Uzunov, Herb. Salerno)

***Geranium pyrenaicum*** Burm.f. subsp. ***pyrenaicum***

3,1 (HFLA), 4 (TO-HP), 13,1 (TO-HP)

***Geranium robertianum*** L.

1 (BI, HLUC, TO-HP, Herb. Faraoni, Herb. Salerno), 8 (HLUC), 15 (TO-HP)

***Geranium sylvaticum*** L.

1 (TO-HP, Herb. Gangale & Uzunov), 4 (BI), 5 (Herb. Gangale & Uzunov 2 es.), 6 (APP 2 es., Herb. Faraoni), 7 (TO-HP), 18 (HFLA, Herb. Cancellieri, Herb. Faraoni, Herb. Salerno)

Onagraceae

***Chamaenerion angustifolium*** (L.) Scop.

[*Epilobium angustifolium* L.]

17 (TO-HP)

***Epilobium alsinifolium*** Vill.

7 (MRSN, TO-HP)

***Epilobium collinum*** C.C.Gmel.

2 (APP, HLUC, TO-HP), 4,1 (MSNM), 5 (Herb. Cancellieri), 8 (HLUC, MSNM, Herb. Soldano), 9 (MSNM), 14 (Herb. Rizzieri Masin), 14,1 (HLUC)

***Epilobium lanceolatum*** Sebast. & Mauri

15 (Herb. Cancellieri)

***Epilobium montanum*** L.

1 (MRSN, TO-HP, Herb. Gangale & Uzunov), 3 (MSNM, Herb. Cancellieri, Herb. Faraoni, Herb. Salerno), 4 (HLUC), 9 (Herb. Rizzieri Masin), 13,1 (TO-HP), 15 (TO-HP, Herb. Gangale & Uzunov)

***Epilobium obscurum*** Schreb.

8 (PORUN), 9 (APP, Herb. Faraoni), 13 (Herb. Gangale & Uzunov)

***Epilobium palustre* L.**

9 (HLUC, Herb. Gangale & Uzunov), 13 (TO-HP, Herb. Gangale & Uzunov)

Sapindaceae

***Acer pseudoplatanus* L.**

1 (TO-HP, Herb. Salerno), 3 (TO-HP), 4 (HLUC), 9 (HLUC), 12 (TO-HP, PORUN), 13,1 (HFLA, HLUC, MSNM, TO-HP)

The specimens collected in the site 13,1 have a tomentosity on the underleaf not usually present in *Acer pseudoplatanus* L. They could be interpreted as hybrids between *A. pseudoplatanus* L. and *A. opalus* Mill., although this hybrid is not recognized in literature. However hairy varieties of *A. pseudoplatanus* have been described: *A. pseudoplatanus* L. var. *tomentosum* Tausch (Tausch, 1829) and *A. pseudoplatanus* L. var. *villosum* (J.Presl & C.Presl) Parl. ((Parlatore, 1875).

Malvaceae

***Malva moschata* L.**

8 (Herb. Gangale & Uzunov)

***Tilia cordata* Mill.**

2 (APP, Herb. Salerno)

\*\* ***Tilia platyphyllos* Scop. subsp. *cordifolia* (Besser) C.K.Schneid.**

16 (APP, MSNM)

Thymelaeaceae

***Daphne mezereum* L.**

4 (MRSN), 5 (MRSN)

Cistaceae

***Helianthemum nummularium* (L.) Mill. subsp. *grandiflorum* (Scop.) Schinz & Thell.**

3,1 (APP), 5 (HLUC)

***Helianthemum nummularium* (L.) Mill. subsp. *obscurum* (Čelak.) Holub**

4 (MRSN, Herb. Cancellieri, Herb. Faraoni), 5 (MRSN 2 es., Herb. Gangale & Uzunov)

***Helianthemum oelandicum* (L.) Dum.Cours. subsp. *italicum* (L.) Ces.**

3,1 (HFLA), 5 (HLUC, TO-HP, Herb. Gangale & Uzunov), 18 (Herb. Gangale & Uzunov)

The revision of this group has been done following Tison and De Foucault (2014); they identify the taxon *H. italicum* (L.) Pers., that includes the small size orophilous morphotype ascribable to *H. oelandicum* (L.) Dum.Cours subsp. *alpestre* (Jacq.) Ces.

Resedaceae

***Reseda lutea* L. subsp. *lutea***

2 (MRSN, PORUN, TO-HP, Herb. Gangale & Uzunov)

Brassicaceae

**Alliaria petiolata** (M.Bieb.) Cavara & Grande  
1 (Herb. Salerno), 2 (TO-HP), 15 (TO-HP)

**Arabis alpina** L. subsp. *alpina*  
2 (TO-HP, Herb. Rizzieri Masin), 18 (TO-HP, Herb. Gangale & Uzunov)

**Arabis collina** Ten. subsp. *collina*  
3,1 (HFLA), 4 (Herb. Rizzieri Masin), 8 (PORUN)

**Arabis hirsuta** (L.) Scop.  
4,1 (Herb. Salerno), 8 (MSNM)

**Biscutella laevigata** L. subsp. *laevigata*  
3 (GE, HFLA, MRSN, Herb. Cancellieri, Herb. Gangale & Uzunov, Herb. Tilia), 5 (APP, HLUC),  
6 (MRSN), 8 (MRSN, TO-HP), 9 (BI), 17 (Herb. Salerno), 18 (PORUN, TO-HP, Herb. Faraoni)

**Capsella bursa-pastoris** (L.) Medik. subsp. *bursa-pastoris*  
14 (TO-HP)

**Cardamine amara** L. subsp. *amara*  
14,1 (Herb. Rizzieri Masin)

**Cardamine asarifolia** L.  
3 (HFLA, TO-HP), 4 (PORUN, Herb. Rizzieri Masin), 6 (APP 2 es.), 6,1 (Herb. Gangale &  
Uzunov), 7 (MRSN, MSNM, Herb. Faraoni, Herb. Salerno)

**Cardamine impatiens** L. subsp. *impatiens*  
1 (MSNM, PORUN, Herb. Gangale & Uzunov, Herb. Salerno), 2 (APP, TO-HP), 15 (PORUN, TO-  
HP)

**Cardamine plumieri** Vill.  
4 (PORUN), 4,1 (Herb. Salerno, Herb. Soldano, Herb. Tilia), 6 (APP, MSNM)

**Cardamine resedifolia** L.  
5 (APP, MRSN, Herb. Cancellieri), 6 (Herb. Gangale & Uzunov), 7 (TO-HP)

**Draba dubia** Suter subsp. *dubia*  
3 (TO-HP), 4,1 (Herb. Salerno, Herb. Soldano), 5 (GE, MRSN), 6 (APP 2 es.)

**Erysimum** cfr. *jugicola* Jord.  
3 (TO-HP), 3,1 (HFLA), 4 (PORUN, Herb. Rizzieri Masin), 4,1 (Herb. Gangale & Uzunov, Herb.  
Salerno), 5 (APP 2 es., GE), 6 (MRSN 2 es., HLUC, MSNM)

The specimens collected are devoid of ripe siliques and seeds that would allow certain specific attribution (S. Peccenini, pers. comm.). *E. jugicola* is morphologically very similar to *E. burnati* G. Vidal, but they differ for chromosomic numbers (respectively  $2n=18$  and  $2n=14$ ). *E. burnati* is not recognized in up-to-date French floras, while it is recognized in the new Flora d'Italia (Pignatti 2017).

**Fourraea alpina** (L.) Greuter & Burdet  
[*Arabis pauciflora* (Grimm) Garke]

2 (MSNM, Herb. Gangale & Uzunov), 3 (GE, PORUN, TO-HP), 13,1 (Herb. Gangale & Uzunov), 15 (MRSN)18 (Herb. Cancellieri, Herb. Faraoni)

***Hugueninia tanacetifolia*** (L.) Rchb. subsp. *tanacetifolia*  
7 (GE, MSNM)

***Kerneria saxatilis*** (L.) Sweet subsp. *saxatilis*  
3 (TO-HP), 4,1 (Herb. Gangale & Uzunov, Herb. Salerno, Herb. Tilia), 5 (Herb. Cancellieri), 18 (Herb. Gangale & Uzunov, Herb. Lattanzi, Herb. Salerno)

***Noccaea caerulescens*** (J.Presl & C.Presl) F.K.Mey.  
[*Thlaspi caerulescens* J. & C. Presl]  
10 (MSNM), 19 (TO-HP)

***Noccaea sylvia*** (Gaudin) F.K.Mey.  
[*Thlaspi sylvium* Gaudin]  
3 (HFLA, MSNM, Herb. Gangale & Uzunov, Herb. Salerno, Herb. Tilia), 4 (PORUN, Herb. Lattanzi), 4,1 (Herb. Tilia), 5 (HLUC, Herb. Bovio), 6 (APP, GE, MSNM, TO-HP, Herb. Cancellieri, Herb. Faraoni), 6,1 (Herb. Gangale & Uzunov), 8 (Herb. Faraoni)

***Pseudoturritis turrita*** (L.) Al-Shehbaz  
[*Arabis turrita* L.]  
2 (TO-HP, Herb. Gangale & Uzunov)

***Sisymbrium austriacum*** Jacq. subsp. *austriacum*  
17 (HLUC, TO-HP, Herb. Faraoni, Herb. Gangale & Uzunov)

***Turritis glabra*** L.  
[*Arabis glabra* (L.) Bernh.]  
5 (APP), 8 (TO-HP)

#### Superaterids Santalaceae

***Thesium alpinum*** L.  
3 (MRSN), 4,1 (Herb. Salerno, Herb. Tilia), 5 (Herb. Cancellieri), 8 (Herb. Cancellieri), 15 (Herb. Bovio), 18 (PORUN, Herb. Gangale & Uzunov, Herb. Salerno)

***Thesium bavarum*** Schrank  
16 (APP)

#### Plumbaginaceae

***Armeria alpina*** Willd.  
6 (APP)

#### Polygonaceae

***Bistorta officinalis*** Delarbre  
1 (HLUC, TO-HP, Herb. Cancellieri, Herb. Faraoni, Herb. Gangale & Uzunov, Herb. Tilia), 3,1 (HFLA), 5 (TO-HP), 12 (PORUN)

***Bistorta vivipara*** (L.) Delarbre

1 (HLUC), 3 (TO-HP, Herb. Salerno), 3,1 (HFLA), 4 (PORUN, Herb. Faraoni), 4,1 (Herb. Cancellieri, Herb. Tilia), 5 (HLUC, MRSN, Herb. Gangale & Uzunov), 18 (Herb. Salerno, TO-HP)

***Koenigia alpina*** (All.) T.M.Schust. & Reveal

[*Aconogonum alpinum* (All.) Schur]

5 (Herb. Salerno), 6 (Herb. Cancellieri, Herb. Faraoni), 7 (APP)

***Rumex acetosa*** L. subsp. *acetosa*

3 (MRSN), 9 (BI)

***Rumex acetosella*** L. subsp. *acetosella*

8 (HLUC, Herb. Salerno), 14 (MSNM), 15 (APP, HLUC)

***Rumex alpinus*** L.

6 (MSNM)

***Rumex arifolius*** All.

[*Rumex alpestris* Jacq.]

3 (MSNM), 4 (PORUN), 7 (MRSN), 8 (TO-HP)

***Rumex obtusifolius*** L. subsp. *obtusifolius*

1 (MRSN), 2 (APP)

***Rumex scutatus*** L. subsp. *scutatus*

2 (APP, HFLA, HLUC, PORUN, Herb. Cancellieri, Herb. Faraoni, Herb. Gangale & Uzunov, Herb. Salerno, Herb. Tilia), 3 (Herb. Salerno), 4 (PORUN), 5 (MRSN), 6 (TO-HP), 8 (Herb. Rizzieri Masin), 18 (PORUN, TO-HP)

#### Droseraceae

***Drosera rotundifolia*** L.

8,1 (TO-HP, Herb. Gangale & Uzunov)

#### Caryophyllaceae

***Arenaria grandiflora*** L. subsp. *grandiflora*

6 (APP)

***Arenaria serpyllifolia*** L. subsp. *serpyllifolia*

4 (PORUN), 4,1 (Herb. Tilia), 5 (Herb. Cancellieri, Herb. Gangale & Uzunov), 6 (TO-HP), 12 (HFLA, Herb. Gangale & Uzunov), 17 (HLUC)

***Atocion rupestre*** (L.) Oxelman

[*Silene rupestris* L.]

1 (Herb. Rizzieri Masin), 2 (APP, HFLA, PORUN, Herb. Cancellieri, Herb. Faraoni 2 es., Herb. Gangale & Uzunov, Herb. Salerno), 3 (TO-HP), 4,1 (Herb. Salerno), 8 (PORUN, TO-HP, Herb. Cancellieri, Herb. Gangale & Uzunov, Herb. Rizzieri Masin), 15 (PORUN, TO-HP, Herb. Gangale & Uzunov), 16 (PORUN), 17 (HLUC)

***Cerastium arvense*** L. subsp. ***strictum*** Gaudin

[*Cerastium arvense* L. subsp. *strictum* (W.D.J. Koch) Schinz & R. Keller]

4 (MRSN, Herb. Rizzieri Masin), 4,1 (Herb. Salerno), 6 (MSNM), 7 (APP)

***Cerastium holosteoides*** Fr.

1 (MRSN), 4 (BI, PORUN, Herb. Lattanzi), 5 (TO-HP), 6 (MSNM, TO-HP)

***Cerastium lineare*** All.

5 (Herb. Bovio, Herb. Soldano), 6 (HLUC)

***Cherleria laricifolia*** (L.) Iamónico subsp. ***laricifolia***

[*Minuartia laricifolia* (L.) Schinz & Thell. subsp. *laricifolia*]

1 (TO-HP), 2 (APP 2 es., GE, HFLA, HLUC, MRSN, MSNM, PORUN, TO-HP, Herb. Cancellieri, Herb. Faraoni, Herb. Gangale & Uzunov, Herb. Rizzieri Masin), 3 (GE, HFLA, MSNM, PORUN, Herb. Cancellieri, Herb. Gangale & Uzunov, Herb. Rizzieri Masin, Herb. Tilia), 4 (BI, PORUN, Herb. Faraoni, Herb. Lattanzi, Herb. Rizzieri Masin), 4,1 (Herb. Tilia), 5 (MRSN), 6 (APP), 7 (Herb. Salerno), 8 (Herb. Gangale & Uzunov, Herb. Rizzieri Masin)

***Cherleria sedoides*** L.

[*Minuartia sedoides* (L.) Hiern.]

6 (Herb. Gangale & Uzunov), 7 (MRSN)

***Dianthus balbisii*** Ser. subsp. ***balbisii***

2 (TO-HP)

***Dianthus carthusianorum*** L. subsp. ***carthusianorum***

2 (APP, HFLA 2 es., MRSN, PORUN), 3,1 (APP), 5 (APP)

***Dianthus furcatus*** Balb. subsp. ***furcatus***

3 (Herb. Tilia), 5 (GE), 5 (TO-HP)

E ***Dianthus furcatus*** Balb. subsp. ***lereschii*** (Burnat) Pignatti

3 (PORUN), 3,1 (HFLA), 4 (PORUN)

***Dianthus pavonius*** Tausch

1 (Herb. Rizzieri Masin), 3 (BI, GE, HLUC, MSNM, Herb. Cancellieri, Herb. Faraoni), 3,1 (APP, HFLA), 4 (MRSN, Herb. Faraoni), 5 (APP, HLUC), 7 (Herb. Salerno), 8 (HFLA, Herb. Cancellieri)

***Dianthus seguieri*** Vill. subsp. ***seguieri***

1 (Herb. Cancellieri, Herb. Rizzieri Masin 2 es.), 2 (HFLA, HLUC, MRSN, MSNM, Herb. Cancellieri, Herb. Faraoni, Herb. Gangale & Uzunov, Herb. Rizzieri Masin, Herb. Tilia), 5 (Herb. Bovio), 12 (Herb. Cancellieri), 16 (TO-HP)

***Dianthus sylvestris*** Wulfen subsp. ***sylvestris***

3 (Herb. Rizzieri Masin), 3,1 (APP 2 es.), 4,1 (Herb. Gangale & Uzunov), 5 (Herb. Faraoni), 18 (APP)

***Gypsophila repens*** L.

3 (Herb. Cancellieri, Herb. Faraoni), 3,1 (HFLA), 4 (Herb. Rizzieri Masin), 4,1 (MSNM, Herb. Gangale & Uzunov, Herb. Salerno, Herb. Tilia), 5 (APP, HLUC, Herb. Cancellieri, Herb. Salerno), 18 (TO-HP)

***Minuartia recurva*** (All.) Schinz & Thell. subsp. *recurva*  
7 (TO-HP)

***Minuartia rostrata*** (Pers.) Rchb.  
4,1 (Herb. Soldano)

***Moehringia trinervia*** (L.) Clairv.  
1 (GE, Herb. Gangale & Uzunov, Herb. Salerno, Herb. Tilia), 15 (TO-HP, Herb. Gangale & Uzunov)

***Sabulina verna*** (L.) Rchb. subsp. *verna*  
[*Minuartia verna* (L.) Hiern subsp. *verna*]  
3 (MSNM), 4 (TO-HP, Herb. Rizzieri Masin), 4,1 (MSNM, Herb. Tilia), 5 (Herb. Cancellieri)

***Sabulina villarsii*** (Balb.) Rchb.  
[*Minuartia villarii* (Balb.) Wilczek & Chenevard ]  
6 (APP)

***Sagina glabra*** (Willd.) Fenzl  
4 (MSNM), 8 (Herb. Soldano)

***Saponaria ocymoides*** L. subsp. *ocymoides*  
2 (HLUC, PORUN, TO-HP), 4,1 (Herb. Gangale & Uzunov), 6 (HLUC), 19 (TO-HP)

***Scleranthus perennis*** L. subsp. *perennis*  
16 (Herb. Gangale & Uzunov)

***Scleranthus polycarpus*** L.  
3 (Herb. Tilia), 4 (PORUN), 4,1 (Herb. Tilia), 5 (MRSN), 8 (APP, MRSN, TO-HP, Herb. Gangale & Uzunov), 13 (Herb. Cancellieri), 14 (MSNM), 15 (APP)

***Silene acaulis*** (L.) Jacq. subsp. *bryoides* (Jord.) Nyman  
4 (MRSN)

***Silene italica*** (L.) Pers. subsp. *italica*  
18 (Herb. Salerno)

***Silene latifolia*** Poir.  
[includes *Silene latifolia* Poir. subsp. *alba* (Mill.) Greuter & Burdet]  
2 (MRSN), 3 (TO-HP)

***Silene nutans*** L. subsp. *nutans*  
1 (MRSN), 2 (HFLA), 3,1 (APP), 4 (MRSN, PORUN, Herb. Faraoni, Herb. Lattanzi), 4,1 (Herb. Gangale & Uzunov 2 es., Herb. Tilia), 4,1 (Herb. Gangale & Uzunov), 5 (Herb. Cancellieri), 6 (APP), 8 (HFLA, HLUC, Herb. Cancellieri, Herb. Faraoni 2 es.), 16 (HLUC 3 es., Herb. Gangale & Uzunov), 17 (Herb. Gangale & Uzunov), 18 (TO-HP, Herb. Faraoni)

***Silene saxifraga*** L.  
3,1 (APP, HFLA), 4 (PORUN, Herb. Cancellieri), 4,1 (Herb. Gangale & Uzunov, Herb. Salerno, Herb. Soldano, Herb. Tilia), 5 (MRSN), 7 (APP)

*Silene vulgaris* (Moench) Garcke subsp. *vulgaris*

1 (MRSN), 4 (HLUC, PORUN, Herb. Rizzieri Masin), 5 (Herb. Faraoni), 7 (APP), 15 (HLUC, Herb. Gangale & Uzunov), 17 (TO-HP)

*Spergularia rubra* (L.) J.Presl & C.Presl

8 (TO-HP), 14,1 (Herb. Rizzieri Masin)

*Stellaria alsine* Grimm

1 (Herb. Gangale & Uzunov), 8,1 (Herb. Cancellieri, Herb. Salerno), 9 (Herb. Gangale & Uzunov, Herb. Salerno), 13 (MSNM)

*Stellaria graminea* L.

1 (APP, MRSN, PORUN, TO-HP, Herb. Cancellieri, Herb. Faraoni, Herb. Salerno, Herb. Tilia)

*Stellaria media* (L.) Vill. subsp. *media*

3 (TO-HP)

Amaranthaceae (Chenopodiaceae according to Bartolucci et al. 2018)

*Blitum bonus-henricus* (L.) Rchb.

[*Chenopodium bonus-henricus* L.]

4 (PORUN), 7 (TO-HP), 8 (TO-HP)

#### Asterids

Balsaminaceae

*Impatiens noli-tangere* L.

1 (APP, BI, GE, HFLA, HLUC, MRSN, PORUN, Herb. Salerno, Herb. Tilia), 16 (Herb. Salerno)

Primulaceae

*Lysimachia nummularia* L.

1 (APP, MRSN, PORUN, Herb. Faraoni, Herb. Salerno)

*Lysimachia vulgaris* L.

8,1 (Herb. Gangale & Uzunov)

*Primula latifolia* Lapeyr. subsp. *graveolens* (Hegetschw.) Rouy

4 (Herb. Faraoni), 4,1 (Herb. Salerno), 6 (MSNM)

*Primula veris* L. subsp. *columnae* (Ten.) Maire & Petitm.

[*Primula veris* L. subsp. *suaveolens* (Bertol.) Gutermann & Ehrend.]

4,1 (Herb. Gangale & Uzunov), 6 (HLUC)

*Samolus valerandi* L.

9 (MSNM)

*Soldanella alpina* L. subsp. *alpina*

3 (Herb. Salerno), 7 (TO-HP)



## Ericaceae

*Arctostaphylos uva-ursi* (L.) Spreng.

3 (TO-HP), 3,1 (HFLA)

*Calluna vulgaris* (L.) Hull

3 (PORUN, TO-HP, Herb. Gangale & Uzunov, Herb. Salerno, Herb. Tilia), 4 (MRSN, PORUN), 4,1 (Herb. Salerno), 5 (APP), 8 (HFLA, HLUC, Herb. Tilia)

*Kalmia procumbens* (L.) Gift, Kron & Stevens ex Galasso, Banfi & F.Conti

4,1 (Herb. Salerno)

*Rhododendron ferrugineum* L.

3 (HFLA, PORUN, Herb. Gangale & Uzunov), 4 (BI, HLUC), 4,1 (Herb. Salerno), 6 (APP, MRSN, Herb. Cancellieri, Herb. Faraoni), 18 (TO-HP)

*Vaccinium myrtillus* L.

3 (PORUN, Herb. Faraoni, Herb. Gangale & Uzunov, Herb. Salerno), 5 (Herb. Gangale & Uzunov), 8 (HLUC, TO-HP), 9 (BI), 18 (TO-HP)

*Vaccinium uliginosum* L. subsp. *microphyllum* (Lange) Tolm.

6 (TO-HP), 7 (TO-HP), 18 (APP, HFLA)

*Vaccinium vitis-idaea* L.

3 (PORUN, TO-HP, Herb. Salerno, Herb. Tilia), 4 (PORUN), 5 (APP, Herb. Gangale & Uzunov), 8 (Herb. Cancellieri)

## Rubiaceae

*Asperula cynanchica* L. subsp. *cynanchica*

3 (MSNM, Herb. Gangale & Uzunov, Herb. Salerno, Herb. Tilia), 3,1 (APP, HFLA), 4 (PORUN, Herb. Rizzieri Masin), 4,1 (Herb. Tilia), 5 (HLUC, Herb. Cancellieri), 6 (HLUC), 7 (Herb. Salerno)

*Cruciata glabra* (L.) C.Bauhin ex Opiz

3 (MRSN, PORUN, Herb. Cancellieri, Herb. Faraoni, Herb. Gangale & Uzunov, Herb. Tilia), 4 (HLUC, MRSN, Herb. Lattanzi), 4,1 (Herb. Gangale & Uzunov, Herb. Salerno, Herb. Tilia), 5 (HLUC), 9 (Herb. Salerno), 12 (TO-HP), 13 (TO-HP), 18 (TO-HP)

*Galium aparine* L.

1 (MRSN), 2 (TO-HP), 15 (TO-HP)

*Galium centroniae* Cariot

3 (HLUC, Herb. Salerno, Herb. Tilia), 8 (MSNM), 18 (Herb. Gangale & Uzunov)

*Galium mollugo* L. subsp. *mollugo*

1 (MRSN), 2 (TO-HP), 17 (HLUC)

*Galium palustre* L. subsp. *palustre*

9 (HLUC, Herb. Gangale & Uzunov)

*Galium pumilum* Murray

3 (PORUN, TO-HP, Herb. Gangale & Uzunov, Herb. Tilia), 4 (Herb. Lattanzi), 4,1 (Herb. Gangale & Uzunov), 5 (APP, MRSN), 6 (MRSN)

***Galium verum*** L. subsp. *verum*  
1 (MRSN, PORUN)

#### Gentianaceae

***Gentiana acaulis*** L.  
4 (PORUN, Herb. Rizzieri Masin), 6 (TO-HP), 7 (APP, HLUC, MRSN, MSNM, Herb. Faraoni), 8 (TO-HP)

***Gentiana asclepiadea*** L.  
1 (TO-HP)

***Gentiana lutea*** L. subsp. *lutea*  
4,1 (Herb. Gangale & Uzunov)

***Gentiana nivalis*** L.  
6 (Herb. Gangale & Uzunov)

e ***Gentiana rostanii*** Reut. ex Verl.  
7 (GE, MSNM)

***Gentiana verna*** L. subsp. *verna*  
4 (TO-HP), 4,1 (Herb. Gangale & Uzunov), 6 (Herb. Cancellieri), 7 (APP, HLUC, TO-HP, Herb. Faraoni)

***Gentianella campestris*** (L.) Börner subsp. *campestris*  
4 (Herb. Rizzieri Masin), 5 (Herb. Gangale & Uzunov), 8 (APP, GE, HFLA, TO-HP), 9 (BI), 12 (TO-HP, Herb. Salerno), 18 (APP, HLUC, PORUN, Herb. Cancellieri, Herb. Faraoni), 19 (TO-HP)

#### Apocynaceae

***Vincetoxicum hirundinaria*** Medik. subsp. *hirundinaria*  
2 (APP, Herb. Gangale & Uzunov, Herb. Salerno), 4 (HLUC), 15 (MRSN), 16 (TO-HP), 17 (HLUC, TO-HP)

#### Boraginaceae

***Echium vulgare*** L. subsp. *vulgare*  
17 (TO-HP)

***Myosotis alpestris*** F.W.Schmidt  
3 (TO-HP), 4 (GE, PORUN 2 es.), 5 (TO-HP), 6 (APP 2 es.)

***Myosotis arvensis*** (L.) Hill subsp. *arvensis*  
2 (TO-HP)

***Myosotis scorpioides*** L. subsp. *scorpioides*

1 (APP 3 es., HFLA 2 es., MRSN, Herb. Gangale & Uzunov), 8 (TO-HP, Herb. Salerno), 8,1 (Herb. Gangale & Uzunov), 9 (APP, HLUC, PORUN 2 es., Herb. Cancellieri, Herb. Faraoni, Herb. Gangale & Uzunov, Herb. Lattanzi, Herb. Salerno 2 es.), 12 (Herb. Salerno), 13 (TO-HP)

***Pulmonaria australis*** (Murr) W.Sauer  
3 (TO-HP)

E ***Pulmonaria vallisarsae*** A.Kern. subsp. ***apennina*** (Cristof. & Puppi) L.Cecchi & Selvi  
[*Pulmonaria apennina* Cristof. & Puppi]  
1 (TO-HP, Herb. Soldano)

#### Convolvulaceae

***Convolvulus arvensis*** L.  
2 (TO-HP)

\* ***Cuscuta planiflora*** Ten.  
6 (MSNM)

#### Solanaceae

***Solanum dulcamara*** L.  
2 (HFLA, HLUC, MRSN, TO-HP, Herb. Tilia), 16 (Herb. Gangale & Uzunov)

#### Oleaceae

***Fraxinus excelsior*** L. subsp. ***excelsior***  
1 (HLUC, Herb. Gangale & Uzunov), 8 (TO-HP), 16 (TO-HP), 18 (TO-HP)

#### Plantaginaceae

***Digitalis grandiflora*** Mill.  
4 (TO-HP), 5 (Herb. Gangale & Uzunov)

A NAT ***Digitalis purpurea*** L.  
15 (MSNM)

***Globularia bisnagarica*** L.  
17 (PORUN), 18 (Herb. Salerno)

***Globularia cordifolia*** L.  
3 (MRSN, PORUN, Herb. Gangale & Uzunov), 3,1 (APP 2 es., HFLA), 4,1 (Herb. Gangale & Uzunov, Herb. Salerno), 5 (HLUC)

***Linaria angustissima*** (Loisel.) Borbás  
2 (HFLA), 9 (HLUC), 12 (Herb. Cancellieri, Herb. Salerno), 13 (PORUN), 13,1 (Herb. Tilia)

***Plantago atrata*** Hoppe subsp. ***fuscescens*** (Jord.) Pilg.  
3 (HFLA, Herb. Cancellieri, Herb. Faraoni, Herb. Rizzieri Masin, Herb. Salerno 2 es., Herb. Tilia), 3,1 (HFLA, Herb. Bovio), 4 (MSNM, Herb. Cancellieri, Herb. Faraoni), 4,1 (Herb. Gangale & Uzunov), 5 (MRSN, TO-HP), 18 (HFLA), 19 (TO-HP)

***Plantago lanceolata* L.**

18 (TO-HP)

***Plantago major* L.**

1 (TO-HP), 2 (TO-HP), 17 (TO-HP)

***Plantago maritima* L. subsp. *serpentina* (All.) Arcang.**

3 (HFLA, PORUN, Herb. Cancellieri, Herb. Faraoni, Herb. Gangale & Uzunov, Herb. Rizzieri Masin, Herb. Salerno 2 es., Herb. Tilia), 3,1 (HFLA), 4 (PORUN), 4,1 (Herb. Gangale & Uzunov 2 es., Herb. Tilia), 5 (HLUC, MRSN, Herb. Cancellieri, Herb. Gangale & Uzunov, TO-HP), 8 (GE, HFLA, Herb. Tilia), 15 (Herb. Faraoni), 18 (HFLA, Herb. Salerno)

***Plantago media* L. subsp. *media***

3 (HFLA, Herb. Faraoni, Herb. Gangale & Uzunov, Herb. Salerno), 4 (PORUN), 5 (HLUC, Herb. Gangale & Uzunov), 18 (TO-HP)

***Veronica allionii* Vill.**

3 (GE, HFLA, HLUC, MRSN, MSNM, TO-HP, Herb. Cancellieri, Herb. Salerno, Herb. Tilia), 4 (BI, HLUC, Herb. Faraoni), 5 (APP), 6 (HLUC, Herb. Gangale & Uzunov), 7 (MRSN), 8 (APP, HLUC, TO-HP, Herb. Cancellieri, Herb. Faraoni), 19 (TO-HP)

***Veronica alpina* L.**

6 (no *exsiccatum* photo by Rosati), 7 (APP)

***Veronica aphylla* L. subsp. *aphylla***

18 (Herb. Gangale & Uzunov)

***Veronica arvensis* L.**

3 (Herb. Tilia), 4 (PORUN), 5 (MRSN), 6 (Herb. Cancellieri)

***Veronica beccabunga* L.**

4 (TO-HP)

***Veronica chamaedrys* L. subsp. *chamaedrys***

1 (MRSN, Herb. Gangale & Uzunov), 4 (HLUC, PORUN, TO-HP), 4,1 (Herb. Gangale & Uzunov), 5 (APP, MRSN), 6 (APP), 8 (Herb. Faraoni), 15 (MRSN), 18 (Herb. Cancellieri, Herb. Gangale & Uzunov)

***Veronica fruticans* Jacq.**

3 (Herb. Salerno), 5 (Herb. Gangale & Uzunov), 8 (APP, MRSN, MSNM, PORUN, Herb. Cancellieri, Herb. Rizzieri Masin)

***Veronica officinalis* L.**

1 (BI, MSNM, PORUN, Herb. Faraoni), 3 (HFLA, PORUN, Herb. Faraoni, Herb. Gangale & Uzunov, Herb. Salerno, Herb. Tilia), 4 (PORUN), 4,1 (Herb. Salerno), 8 (TO-HP, Herb. Cancellieri, Herb. Faraoni, Herb. Gangale & Uzunov), 13,1 (HFLA), 15 (HLUC, PORUN, TO-HP, Herb. Cancellieri, Herb. Faraoni), 18 (Herb. Cancellieri, Herb. Gangale & Uzunov), 19 (Herb. Gangale & Uzunov)

A NAT ***Veronica persica* Poir.**

5 (MRSN)

***Veronica serpyllifolia* L.**

7 (TO-HP), 8 (MRSN, Herb. Salerno), 9 (BI, MSNM, Herb. Faraoni, Herb. Gangale & Uzunov), 15 (Herb. Gangale & Uzunov), 18 (Herb. Cancellieri, Herb. Faraoni)

***Veronica urticifolia* Jacq.**

1 (APP, GE, Herb. Faraoni, Herb. Rizzieri Masin, Herb. Salerno, Herb. Tilia)

***Veronica verna* L. subsp. *verna***

8 (Herb. Gangale & Uzunov), 18 (Herb. Soldano)

Scrophulariaceae

***Scrophularia hoppei* W.D.J.Koch**

[*Scrophularia hoppii* Koch]

4 (PORUN, Herb. Rizzieri Masin), 5 (GE), 6 (MRSN), 12 (TO-HP)

***Scrophularia nodosa* L.**

1 (Herb. Gangale & Uzunov), 2 (APP, HFLA, HLUC, MRSN, TO-HP), 15 (TO-HP)

***Verbascum lychnitis* L.**

4,1 (Herb. Gangale & Uzunov), 8 (TO-HP), 9 (HLUC), 13,1 (TO-HP)

***Verbascum thapsus* L. subsp. *montanum* (Schrad.) Bonnier & Layens**

4,1 (Herb. Gangale & Uzunov)

Lentibulariaceae

***Pinguicula leptoceras* Rchb.**

[includes *Pinguicula arvetii* Genty]

3 (✓PORUN), 3,1 (✓APP), 6 (✓APP), 7 (MRSN)

The specialist of the genus *Pinguicula* P. Zaccara considers *P. leptoceras* and *P. arvetii* Genty distinct taxa, while Conti et al. (2005, 2007) and Bartolucci et al. (2018) don't recognize the existence of *P. arvetii*. The specimens indicated with ✓ are determined as *Pinguicula arvetii*.

***Pinguicula* cfr. *leptoceras* Rchb.**

7 (✓GE)

See note above.

***Pinguicula* cfr. *reichenbachiana* Schindl.**

17 (BI)

***Pinguicula vulgaris* L. subsp. *vulgaris***

6 (APP 2 es., MSNM), 8 (APP), 17 (HLUC), 18 (HFLA)

***Pinguicula* cfr. *vulgaris* L.**

3,1 (HFLA)

Lamiaceae

***Ajuga genevensis* L.**

4 (Herb. Faraoni), 4,1 (Herb. Salerno), 8 (APP, TO-HP), 12 (Herb. Cancellieri, Herb. Gangale & Uzunov)

***Ajuga pyramidalis* L.**

3 (MRSN), 7 (MRSN), 17 (HLUC)

***Ajuga reptans* L.**

13,1 (Herb. Gangale & Uzunov)

***Betonica hirsuta* L.**

[*Stachys pradica* (Zanted.) Greuter & Pignatti]

3 (TO-HP, Herb. Faraoni, Herb. Rizzieri Masin), 3,1 (HFLA), 4 (Herb. Rizzieri Masin), 4,1 (MSNM, Herb. Gangale & Uzunov, Herb. Salerno, Herb. Tilia), 5 (APP, GE, HLUC, MRSN, Herb. Cancellieri), 8 (Herb. Rizzieri Masin), 9 (HLUC), 12 (Herb. Cancellieri)

***Clinopodium alpinum* (L.) Merino subsp. *alpinum***

[*Acinos alpinus* (L.) Moench subsp. *alpinus*]

3,1 (HFLA), 4 (BI, MRSN, TO-HP), 4,1 (Herb. Gangale & Uzunov), 5 (APP, HLUC, MRSN, Herb. Gangale & Uzunov), 8 (HLUC)

***Clinopodium grandiflorum* (L.) Kuntze**

[*Calamintha grandiflora* (L.) Moench]

2 (APP, HLUC, MRSN, MSNM, PORUN, TO-HP, Herb. Faraoni, Herb. Gangale & Uzunov, Herb. Salerno)

***Clinopodium vulgare* L. subsp. *vulgare***

8 (HLUC), 12 (Herb. Gangale & Uzunov)

***Galeopsis tetrahit* L.**

1 (APP, PORUN, Herb. Rizzieri Masin, Herb. Salerno), 8 (Herb. Rizzieri Masin), 12 (HFLA, PORUN), 13 (HLUC), 13,1 (APP, TO-HP, Herb. Faraoni, Herb. Gangale & Uzunov, Herb. Tilia), 14 (Herb. Rizzieri Masin), 15 (APP, HLUC, MRSN, PORUN, Herb. Cancellieri, Herb. Gangale & Uzunov, Herb. Salerno), 16 (Herb. Gangale & Uzunov), 18 (PORUN, Herb. Cancellieri, Herb. Gangale & Uzunov)

***Lamium galeobdolon* (L.) L. subsp. *flavidum* (F.Herm.) A.Löve & D.Löve**

2 (APP), 16 (Herb. Gangale & Uzunov 2 es., Herb. Salerno), 17 (HLUC), 18 (PORUN, Herb. Gangale & Uzunov)

***Prunella grandiflora* (L.) Scholler**

5 (Herb. Gangale & Uzunov)

***Prunella laciniata* (L.) L.**

4 (HLUC, Herb. Faraoni), 5 (Herb. Gangale & Uzunov), 8 (BI, HLUC, MRSN 2 es.), 10 (MSNM), 17 (TO-HP)

***Prunella vulgaris* L. subsp. *vulgaris***

1 (MRSN), 3 (MRSN), 4 (Herb. Faraoni), 5 (Herb. Gangale & Uzunov), 8 (TO-HP), 9 (PORUN), 18 (HFLA)

***Salvia pratensis*** L. subsp. ***pratensis***

16 (APP), 17 (TO-HP, Herb. Gangale & Uzunov)

***Stachys recta*** L. subsp. ***recta***

4,1 (Herb. Gangale & Uzunov)

***Stachys sylvatica*** L.

1 (MRSN, Herb. Faraoni, Herb. Salerno), 8 (HLUC)

***Teucrium chamaedrys*** L. subsp. ***chamaedrys***

2 (HFLA, TO-HP, Herb. Gangale & Uzunov), 16 (APP)

***Teucrium montanum*** L.

2 (HLUC), 3,1 (HFLA), 4,1 (Herb. Gangale & Uzunov, Herb. Salerno), 5 (APP)

***Teucrium scorodonia*** L.

2 (HFLA, HLUC, MRSN, Herb. Rizzieri Masin), 15 (HLUC, TO-HP, Herb. Faraoni), 16 (PORUN, TO-HP, Herb. Gangale & Uzunov)

***Thymus praecox*** Opiz subsp. ***polytrichus*** (A.Kern ex Borbás) Jalas

3,1 (APP 2 es.), 6 (APP 6 es.)

***Thymus praecox*** Opiz cfr. subsp. ***polytrichus*** (A.Kern ex Borbás) Jalas

4,1 (Herb. Gangale & Uzunov)

***Thymus pulegioides*** L.

1 (APP, GE, PORUN, Herb. Faraoni), 2 (APP, HFLA, HLUC, Herb. Tilia), 3 (HLUC, PORUN), 3,1 (HFLA), 4 (MRSN), 5 (APP), 7 (MRSN), 8 (APP 2 es., HFLA, HLUC, PORUN, TO-HP, Herb. Gangale & Uzunov), 9 (APP), 15 (APP), 16 (APP)

The specialist of the genus *Thymus* F. Bartolucci revised the specimens part as *T. pulegioides* L. var. *vestitus* (Lange) Jalas and part as *T. pulegioides* L. var. *pulegioides*, both included in *T. pulegioides* in Bartolucci et al. (2018).

Orobanchaceae

***Bartsia alpina*** L.

6 (Herb. Faraoni)

***Euphrasia alpina*** Lam.

6 (Herb. Cancellieri)

***Euphrasia salisburgensis*** Funk ex Hoppe

4 (HFLA), 4,1 (Herb. Gangale & Uzunov), 18 (PORUN)

***Euphrasia stricta*** D.Wolff ex J.F.Lehm.

[includes *Euphrasia pectinata* Ten.]

8 (APP), 9 (APP)

The specimens are not developed enough to have all the characters for a certain differentiation from *E. pectinata* Ten. (M. Martignoni, pers. comm.). However, neither Conti et al. (2005, 2007) nor Bartolucci et al. (2018) recognize *E. pectinata* as a separate taxa.

E *Melampyrum italicum* (Beauverd) Soó

1 (Herb. Rizzieri Masin), 15 (APP, HLUC, MRSN, PORUN, TO-HP, Herb. Bovio, Herb. Faraoni, Herb. Gangale & Uzunov, Herb. Salerno), 16 (HFLA)

*Orobanche alba* Stephan ex Willd.

3,1 (APP)

*Orobanche caryophyllacea* Sm.

4,1 (Herb. Soldano)

*Orobanche gracilis* Sm.

3,1 (APP), 5 (HLUC)

*Orobanche teucrii* Holandre

3,1 (APP)

*Pedicularis gyroflexa* Vill.

3 (HFLA, TO-HP, Herb. Gangale & Uzunov), 3,1 (HFLA), 4 (BI, MRSN, MSNM, PORUN 2 es., Herb. Faraoni), 4,1 (MSNM, TO-HP), 5 (APP 3 es., HLUC, Herb. Gangale & Uzunov), 6 (APP 3 es., HLUC)

*Pedicularis kernerii* Dalla Torre

6 (APP), 7 (TO-HP)

*Rhinanthus alectorolophus* (Scop.) Pollich subsp. *alectorolophus*

15 (TO-HP), 17 (BI, TO-HP), 18 (HLUC), 19 (TO-HP)

*Rhinanthus glacialis* Personnat subsp. *glacialis*

3 (Herb. Faraoni), 4 (MRSN), 5 (APP, HFLA), 15 (APP, TO-HP, Herb. Gangale & Uzunov), 18 (HLUC)

*Rhinanthus minor* L.

3 (TO-HP), 18 (HFLA, TO-HP)

*Rhinanthus pumilus* (Sterneck) Pau

3 (Herb. Gangale & Uzunov), 4 (HFLA, PORUN, Herb. Cancellieri), 5 (HLUC, Herb. Faraoni)

#### Campanulaceae

*Campanula barbata* L.

8 (APP)

*Campanula cochleariifolia* Lam.

6 (APP, MRSN)

E *Campanula elatines* L.

2 (MRSN, MSNM, PORUN, TO-HP, Herb. Faraoni, Herb. Rizzieri Masin, Herb. Tilia), 4,1 (Herb. Salerno), 5 (MRSN), 14 (BI), 15 (HLUC, PORUN, TO-HP, Herb. Salerno)

*Campanula glomerata* L.



1 (APP, BI, Herb. Rizzieri Masin, Herb. Tilia), 2 (TO-HP), 3 (TO-HP), 4,1 (Herb. Gangale & Uzunov 2 es.), 5 (MRSN 2 es.)

***Campanula persicifolia*** L. subsp. *persicifolia*  
5 (HLUC), 17 (BI)

***Campanula rapunculoides*** L. subsp. *rapunculoides*  
2 (HLUC)

***Campanula scheuchzeri*** Vill. subsp. *scheuchzeri*  
1 (APP, Herb. Gangale & Uzunov), 3 (HLUC, MRSN, Herb. Gangale & Uzunov), 4 (Herb. Faraoni), 5 (MRSN, Herb. Gangale & Uzunov), 8 (MRSN, Herb. Cancellieri, Herb. Faraoni), 9 (HLUC 2 es., PORUN), 12 (MRSN)

***Campanula spicata*** L.  
3,1 (APP, HFLA), 4,1 (MSNM, Herb. Tilia), 5 (HLUC, MRSN), 18 (APP 4 es.)

***Campanula stenocodon*** Boiss. & Reut.  
4,1 (Herb. Gangale & Uzunov), 5 (MRSN), 6 (GE), 7 (APP)

***Campanula trachelium*** L. subsp. *trachelium*  
2 (MRSN), 16 (HLUC)

***Jasione montana*** L.  
16 (APP, HLUC, MRSN, PORUN, TO-HP)

***Phyteuma betonicifolium*** Vill.  
2 (APP, HFLA, MRSN, Herb. Rizzieri Masin), 3 (HFLA, MRSN, Herb. Faraoni, Herb. Gangale & Uzunov), 3,1 (HFLA), 5 (APP, MRSN, Herb. Cancellieri), 8 (APP, HLUC, MRSN, TO-HP, Herb. Cancellieri, Herb. Faraoni), 12 (MRSN), 15 (HLUC, MRSN 2 es.)

***Phyteuma globulariifolium*** Sternb. & Hoppe subsp. *pedemontanum* (Rich.Schulz) Becherer  
3 (PORUN)

***Phyteuma hemisphaericum*** L.  
4 (MRSN, Herb. Faraoni, Herb. Rizzieri Masin), 5 (no *exsiccatum* photo by Rosati), 6 (GE)

***Phyteuma michelii*** All.  
[includes *Phyteuma scorzonerifolium* Vill.]  
4 (HLUC), 15 (Herb. Gangale & Uzunov), 16 (APP, HFLA, HLUC, MRSN, MSNM, PORUN, Herb. Gangale & Uzunov)

***Phyteuma ovatum*** Honck. subsp. *ovatum*  
1 (APP, HFLA), 17 (BI, HLUC), 18 (APP, HFLA, PORUN, TO-HP, Herb. Cancellieri, Herb. Faraoni, Herb. Gangale & Uzunov)

***Phyteuma spicatum*** L. subsp. *spicatum*  
2 (HFLA), 8 (Herb. Salerno)

Asteraceae

*Achillea collina* (Becker ex Wirtg.) Heimerl  
1 (MRSN), 8 (APP), 9 (HLUC)

*Achillea collina* (Becker ex Wirtg.) Heimerl morphotype

1 (TO-HP), 2 (APP, BI 2 es., MSNM, Herb. Gangale & Uzunov), 8 (HLUC, TO-HP), 9 (BI, HLUC), 12 (Herb. Gangale & Uzunov), 13,1 (APP), 15 (APP)

These specimens have some morphological characters of *A. collina*, but proazulenes are absent; it's probably a hybrid form with *A. millefolium* L. or with *A. roseoalba* Ehrend. (pink flowers) (M. Buccheri, V. Casolo, F. Martini, pers. comm.).

*Achillea millefolium* L. *s.l.*

1 (APP)

*Achillea millefolium* L. subsp. *millefolium*

8 (MSNM)

*Adenostyles alliariae* (Gouan) A.Kern.

6 (HLUC, MRSN)

*Adenostyles alpina* (L.) Bluff & Fingerh. subsp. *alpina*

6,1 (Herb. Gangale & Uzunov)

*Antennaria carpatica* (Wahlenb.) Bluff & Fingerh. subsp. *helvetica* (Chrtek & Pouzar) Chrtek & Pouzar

3 (MSNM, Herb. Tilia), 4,1 (Herb. Tilia), 5 (APP), 8 (Herb. Tilia)

*Antennaria dioica* (L.) Gaertn.

3 (MRSN, PORUN, Herb. Faraoni, Herb. Gangale & Uzunov 2 es., Herb. Salerno 2 es., Herb. Tilia), 4 (BI, HLUC, PORUN, Herb. Cancellieri, Herb. Faraoni), 4,1 (Herb. Salerno, Herb. Tilia), 6 (HLUC, Herb. Gangale & Uzunov), 7 (MRSN), 8 (HLUC, TO-HP, Herb. Salerno)

*Arnica montana* L. subsp. *montana*

3 (HFLA, PORUN, Herb. Faraoni 2 es.), 4 (MRSN), 6 (HLUC), 8 (Herb. Cancellieri, Herb. Faraoni, Herb. Salerno), 18 (HFLA), 19 (BI)

*Artemisia absinthium* L.

2 (TO-HP, Herb. Faraoni)

*Artemisia vulgaris* L.

2 (Herb. Faraoni, TO-HP), 18 (TO-HP)

*Aster alpinus* L. subsp. *alpinus*

3 (TO-HP), 3,1 (HFLA), 5 (APP, Herb. Gangale & Uzunov, Herb. Salerno), 6 (Herb. Faraoni)

*Bellidiastrum michelii* Cass.

3 (Herb. Salerno), 3,1 (HFLA), 4,1 (Herb. Salerno), 18 (Herb. Gangale & Uzunov 2 es.)

*Buphthalmum salicifolium* L. *s.l.*

3 (TO-HP), 3,1 (APP), 4,1 (Herb. Gangale & Uzunov), 15 (TO-HP)

The specimens' fruits are not developed enough to permit to distinguish between *B. salicifolium* L. subsp. *flexile* (Bertol.) Garbari and subsp. *salicifolium*, although the separation of these entities

seems to be weak. The revision of the specimens kept in TO-HP points out the existence of individuals of the nominal subspecies and of morphotypes with intermediate characters between the two subspecies; thus the presence of the subsp. *flexile* in Piedmont remains uncertain (D. Bouvet and A. Selvaggi, pers. comm.).

***Carduus defloratus*** L. *s.l.*

20 (MSNM)

***Carduus defloratus*** L. subsp. *defloratus*

3 (HFLA), 4 (BI, TO-HP), 4,1 (Herb. Gangale & Uzunov 2 es.), 5 (HLUC, Herb. Cancellieri)

***Carduus personata*** (L.) Jacq. subsp. *personata*

1 (HFLA, Herb. Rizzieri Masin)

***Centaurea nervosa*** Willd. subsp. *nervosa*

[*Centaurea uniflora* Turra subsp. *nervosa* (Willd.) Bonnier & Layens]

2 (HLUC), 5 (Herb. Salerno), 8 (MRSN, TO-HP)

Probably some specimens are hybrids between *C. nervosa* (also considered a subspecies of *C. uniflora*) and *C. uniflora* Turra.

***Centaurea nigrescens*** Willd. subsp. *transalpina* (Schleich ex DC.) Nyman

8 (HLUC), 16 (APP 2 es., HLUC)

***Centaurea nigrescens*** Willd. cfr. subsp. *transalpina* (Schleich ex DC.) Nyman

1 (APP 4 es., MRSN, TO-HP, Herb. Salerno)

The specimens' flower heads are not enough developed to permit a certain distinction between the nominal subspecies *C. nigrescens* subsp. *nigrescens*) and the subsp. *transalpina*. Usually on the Alps the subsp. *transalpina* replaces the subsp. *nigrescens* at about 800-1000 m a.s.l. These specimens have been collected around this altitude (M. Barbo, pers. comm.).

\* ***Centaurea scabiosa*** L. subsp. *alpestris* (Hegetschw.) Nyman

3,1 (APP), 17 (APP 2 es., TO-HP, Herb. Gangale & Uzunov, Herb. Salerno)

***Centaurea triumfetti*** All.

[*Cyanus triumfetti* (All.) Dostál ex Á. & D. Löve]

3,1 (APP, HFLA), 4,1 (Herb. Gangale & Uzunov), 5 (TO-HP)

***Centaurea uniflora*** Turra

4 (BI, HFLA, PORUN, Herb. Rizzieri Masin), 5 (APP, HLUC, MRSN, TO-HP, Herb. Bovio, Herb. Faraoni, Herb. Gangale & Uzunov), 6 (MSNM, Herb. Cancellieri), 12 (Herb. Gangale & Uzunov)

***Cicerbita alpina*** (L.) Wallr.

[*Lactuca alpina* (L.) A. Gray]

3 (TO-HP)

***Cirsium alsophilum*** (Pollini) Soldano

1 (APP 3 es., HFLA, MSNM), 6 (APP)

***Cirsium erisithales*** (Jacq.) Scop.

1 (APP, HLUC, Herb. Cancellieri, Herb. Gangale & Uzunov, Herb. Tilia)

***Cirsium palustre*** (L.) Scop.

1 (APP), 8 (Herb. Salerno), 8,1 (Herb. Gangale & Uzunov), 9 (BI, HLUC, PORUN), 13 (HFLA, HLUC)

***Cirsium spinosissimum*** (L.) Scop.

7 (TO-HP)

***Crepis alpestris*** (Jacq.) Tausch

3 (TO-HP)

***Crepis conyzifolia*** (Gouan) A. Kern.

4 (TO-HP), 8 (HFLA, Herb. Rizzieri Masin), 12 (Herb. Cancellieri, Herb. Gangale & Uzunov)

***Crepis paludosa*** (L.) Moench

1 (APP), 2 (TO-HP), 15 (APP, TO-HP)

***Crepis pontana*** (L.) Dalla Torre

8 (TO-HP)

***Crepis pyrenaica*** (L.) Greuter

13,1 (MSNM)

***Doronicum austriacum*** Jacq. subsp. *austriacum*

3 (GE, MRSN), 4 (HLUC, MSNM), 4,1 (Herb. Tilia), 6 (APP), 15 (HFLA)

***Erigeron acris*** L. subsp. *acris*

8 (HLUC, Herb. Cancellieri, Herb. Faraoni), 9 (HLUC, MRSN, TO-HP), 17 (PORUN, Herb. Salerno)

A INV ***Erigeron annuus*** (L.) Desf.

16 (Herb. Gangale & Uzunov)

***Erigeron neglectus*** A. Kern.

5 (APP)

***Erigeron uniflorus*** L.

3 (Herb. Gangale & Uzunov), 4,1 (Herb. Salerno), 5 (HLUC), 6 (TO-HP, Herb. Gangale & Uzunov), 7 (APP, MRSN, MSNM)

A INV ***Galinsoga quadriradiata*** Ruiz & Pav.

2 (PORUN, TO-HP)

***Hieracium amplexicaule*** L. subsp. *berardianum* (Arv.-Touv.) Zahn

2 (GE, HFLA, HLUC, MRSN, MSNM, PORUN, TO-HP 2 es., Herb. Gangale & Uzunov), 4 (Herb. Soldano)

***Hieracium bifidum*** Kit. ex Hornem. *s.l.*

3,1 (HFLA), 4,1 (Herb. Soldano), 5 (Herb. Gangale & Uzunov)

***Hieracium dasytrichum*** Arv.-Touv. *s.l.*

5 (Herb. Faraoni)

***Hieracium dentatum*** Hoppe *s.l.*

3 (TO-HP), 4,1 (MSNM, Herb. Soldano), 5 (Herb. Gangale & Uzunov), 18 (Herb. Soldano)

***Hieracium glaucinum*** Jord. *s.l.*

8 (MSNM), 16 (MSNM)

***Hieracium lachenalii*** Suter *s.l.*

8 (Herb. Soldano)

***Hieracium*** cfr. ***lachenalii*** Suter *s.l.*

15 (TO-HP)

Untypical specimen, therefore uncertain determination (G. Gottschlich, pers. comm.).

***Hieracium murorum*** L. *s.l.*

1 (MSNM), 2 (HFLA, PORUN), 3 (MSNM, TO-HP, Herb. Gangale & Uzunov), 13,1 (HFLA), 16 (MSNM, Herb. Gangale & Uzunov), 18 (PORUN)

***Hieracium obscuratum*** Murr *s.l.*

[*Hieracium haematopodum* Zahn (nom. illeg.)]

15 (Herb. Gangale & Uzunov)

***Hieracium piliferum*** Hoppe subsp. ***hololeptum*** (Nägeli & Peter) Zahn

7 (MRSN)

This subspecies wasn't reported in Conti et al. (2005, 2007).

e ***Hieracium piliferum*** Hoppe subsp. ***subnivale*** (Gren. & Godr.) Zahn

3,1 (HFLA), 4,1 (Herb. Gangale & Uzunov)

This subspecies wasn't reported in Conti et al. (2005, 2007).

***Hieracium pilosum*** Schleich. ex Froel. *s.l.*

3,1 (HFLA)

***Hieracium ramosissimum*** Schleich. ex Hegetschw. *s.l.*

2 (HFLA)

***Hieracium scorzonerifolium*** Vill. *s.l.*

3 (TO-HP), 4,1 (Herb. Gangale & Uzunov)

***Hieracium tenuiflorum*** Arv.-Touv. *s.l.*

15 (PORUN)

***Hieracium valdepilosum*** Vill. *s.l.*

18 (TO-HP)

***Hieracium villosum*** Jacq. *s.l.*

3,1 (HFLA)

***Homogyne alpina*** (L.) Cass.

3 (Herb. Gangale & Uzunov, Herb. Salerno), 7 (MRSN, Herb. Faraoni, Herb. Salerno), 18 (Herb. Gangale & Uzunov, Herb. Salerno)

***Hypochaeris maculata*** L.

13,1 (MSNM)

***Hypochaeris radicata*** L.

8 (HFLA)

***Hypochaeris uniflora*** Vill.

4 (BI, PORUN), 6 (HLUC, MRSN), 7 (APP), 8 (HFLA)

***Inula britannica*** L. subsp. *britannica*

3,1 (HFLA)

***Jacobaea incana*** (L.) Veldkamp

[*Senecio incanus* L. subsp. *incanus*]

3 (TO-HP), 4 (PORUN, Herb. Rizzieri Masin), 6 (TO-HP, Herb. Gangale & Uzunov), 7 (APP, MRSN, MSNM, Herb. Cancellieri, Herb. Faraoni, Herb. Salerno)

***Lactuca virosa*** L.

2 (MSNM)

***Lapsana communis*** L. subsp. *communis*

15 (MRSN)

***Leontodon hispidus*** L. subsp. *hispidus*

3 (HFLA), 3,1 (APP), 6 (Herb. Cancellieri), 8 (Herb. Gangale & Uzunov), 14 (TO-HP), 18 (HFLA)

***Leucanthemopsis alpina*** (L.) Heywood subsp. *alpina*

6 (MSNM)

***Leucanthemum coronopifolium*** Vill. cfr. subsp. *ceratophylloides* (All.) Vogt & Greuter

3 (TO-HP), 4 (TO-HP, Herb. Lattanzi), 6 (Herb. Gangale & Uzunov)

***Leucanthemum coronopifolium*** Vill. subsp. *coronopifolium*

3 (GE, MRSN, Herb. Bovio), 4 (MSNM), 5 (Herb. Gangale & Uzunov, Herb. Soldano), 6 (APP), 8 (Herb. Rizzieri Masin)

***Leucanthemum*** cfr. *heterophyllum* (Willd.) DC.

3 (MSNM)

\* ***Leucanthemum ircutianum*** DC. *s.l.*

1 (MRSN, MSNM, Herb. Faraoni), 2 (APP, MSNM), 3 (MRSN), 8 (TO-HP), 9 (Herb. Rizzieri Masin)

***Leucanthemum*** cfr. *ircutianum* DC.

18 (HFLA)

A NAT ***Matricaria discoidea*** DC.

2 (PORUN, Herb. Faraoni, Herb. Salerno), 8 (MRSN, MSNM, PORUN, Herb. Cancellieri, Herb. Salerno), 14 (TO-HP)

***Mycelis muralis*** (L.) Dumort. subsp. ***muralis***

[*Lactuca muralis* (L.) Gaertn.]

15 (TO-HP), 16 (Herb. Salerno)

***Omalotheca sylvatica*** (L.) Sch.Bip. & F.W.Schultz

[*Gnaphalium sylvaticum* L.]

8 (TO-HP, Herb. Salerno), 9 (Herb. Rizzieri Masin), 15 (APP, Herb. Cancellieri), 17 (Herb. Salerno)

***Petasites hybridus*** (L.) G.Gaertn., B.Mey. & Scherb. subsp. ***hybridus***

18 (TO-HP)

\* ***Picris hieracioides*** L. subsp. ***umbellata*** (Schrank) Ces.

1 (APP), 2 (PORUN)

For the identification of the specimens is taken as reference Slovák et al. (2012).

***Pilosella glacialis*** (Reyn. ex Lachen.) F.W.Schultz & Sch.Bip.

[*Hieracium angustifolium* Hoppe]

3 (TO-HP)

***Pilosella lactucella*** (Wallr.) P.D.Sell & C.West *s.l.*

[*Hieracium lactucella* Wallr.]

3 (MSNM), 4,1 (TO-HP), 18 (TO-HP)

***Pilosella laggeri*** (Sch.Bip. ex Rchb.f.) F.W.Schultz & Sch.Bip.

[*Hieracium laggeri* (Sch.Bip. ex Rchb. f.) Fr.]

5 (Herb. Soldano)

***Pilosella officinarum*** Vaill.

[*Hieracium pilosella* L.]

3 (GE, PORUN, TO-HP 2 es.), 4 (MRSN, PORUN), 8 (HLUC, MRSN, PORUN)

***Pilosella piloselloides*** (Vill.) Soják *s.l.*

[*Hieracium piloselloides* Vill.]

17 (TO-HP)

***Pilosella subtardans*** (Nägeli & Peter) Soják

[*Hieracium subtardans* (Naegeli & Peter) Zahn]

4 (HLUC)

***Prenanthes purpurea*** L.

16 (APP 2 es., HFLA, PORUN, Herb. Salerno)

***Scorzoneroides autumnalis*** (L.) Moench

[*Leontodon autumnalis* L.]

3 (Herb. Gangale & Uzunov), 4 (Herb. Rizzieri Masin), 9 (MSNM), 13 (Herb. Gangale & Uzunov)

***Senecio doronicum*** (L.) L. subsp. ***doronicum***

3 (HFLA), 6 (APP, HLUC, MRSN, MSNM, Herb. Faraoni)

***Senecio viscosus*** L.

2 (APP)

*Solidago virgaurea* L. subsp. *minuta* (L.) Arcang.  
3 (PORUN, Herb. Faraoni), 4 (MSNM)

*Sonchus oleraceus* L.  
2 (TO-HP)

*Tanacetum parthenium* (L.) Sch. Bip.  
2 (HLUC)

\*\* *Taraxacum panalpinum* Soest  
7 (MSNM)

*Taraxacum* sect. *alpina* G.E. Haglund  
[included in *T. apenninum* group]  
8 (Herb. Rizzieri Masin)

*Tephroseris integrifolia* (L.) Holub subsp. *capitata* (Wahlenb.) B.Nord.  
3 (TO-HP), 4,1 (Herb. Gangale & Uzunov, Herb. Soldano)

*Tolpis staticifolia* (All.) Sch.Bip.  
17 (TO-HP)

*Tragopogon orientalis* L.  
4 (PORUN)

*Tussilago farfara* L.  
3 (Herb. Salerno), 18 (TO-HP)

#### Adoxaceae

*Sambucus nigra* L.  
2 (MRSN), 8 (TO-HP)

#### Caprifoliaceae

*Knautia mollis* Jord.  
3,1 (APP 4 es.), 4 (BI), 4,1 (MSNM, Herb. Gangale & Uzunov, Herb. Tilia), 5 (GE, HLUC, MRSN, Herb. Bovio, Herb. Cancellieri, Herb. Faraoni), 9 (HLUC, Herb. Rizzieri Masin), 12 (PORUN), 13,1 (APP 2 es., MSNM), 16 (APP 2 es.)

*Scabiosa columbaria* L. *s.l.*  
3,1 (APP), 4,1 (MSNM), 5 (APP)

This taxon presents a considerable variability in Italy, not well understood yet. At present, the attribution to the subspecific rank of the collected samples is not possible (F. Conti and E. Banfi, pers. comm.).

*Succisa pratensis* Moench  
8 (APP), 12 (Herb. Salerno)



***Valeriana montana*** L.

6 (APP)

***Valeriana tripteris*** L. subsp. *tripteris*

3 (Herb. Gangale & Uzunov, TO-HP), 6 (HLUC, MRSN), 18 (Herb. Salerno)

Apiaceae

***Aegopodium podagraria*** L.

1 (MRSN, PORUN, Herb. Faraoni, Herb. Gangale & Uzunov, Herb. Salerno, Herb. Tilia)

***Angelica sylvestris*** L. subsp. *sylvestris*

15 (MRSN, TO-HP)

***Astrantia major*** L. subsp. *major*

1 (APP 2 es., BI, HFLA, HLUC, MRSN, PORUN, Herb. Cancellieri, Herb. Faraoni 2 es., Herb. Gangale & Uzunov, Herb. Salerno, Herb. Tilia), 2 (TO-HP), 3 (Herb. Gangale & Uzunov), 4 (PORUN), 18 (TO-HP)

***Astrantia minor*** L.

3 (HFLA, Herb. Cancellieri, Herb. Faraoni, Herb. Salerno, Herb. Tilia), 3,1 (TO-HP), 5 (APP, HLUC), 18 (TO-HP), 19 (TO-HP)

***Athamanta cretensis*** L.

3 (Herb. Gangale & Uzunov), 3,1 (HFLA), 4,1 (Herb. Gangale & Uzunov 2 es.), 5 (APP), 18 (PORUN)

***Bunium bulbocastanum*** L.

2 (MSNM, Herb. Tilia), 16 (TO-HP), 17 (Herb. Gangale & Uzunov)

***Bupleurum ranunculoides*** L. subsp. *ranunculoides*

3 (TO-HP, Herb. Cancellieri, Herb. Faraoni, Herb. Gangale & Uzunov, Herb. Salerno, Herb. Tilia), 3,1 (HFLA 2 es.), 4 (BI, MRSN, MSNM, PORUN, Herb. Rizzieri Masin), 4,1 (Herb. Gangale & Uzunov, Herb. Salerno, Herb. Tilia), 5 (Herb. Gangale & Uzunov), 7 (HLUC)

***Bupleurum stellatum*** L.

4 (PORUN), 6 (APP, HLUC, Herb. Cancellieri, Herb. Faraoni), 6,1 (Herb. Gangale & Uzunov), 7 (Herb. Salerno), 14,1 (Herb. Rizzieri Masin), 15 (APP, HFLA)

***Carum carvi*** L.

2 (Herb. Gangale & Uzunov), 3 (Herb. Gangale & Uzunov), 4 (TO-HP, Herb. Cancellieri), 5 (Herb. Cancellieri), 18 (TO-HP)

***Chaerophyllum villarsii*** W.D.J.Koch

[*Chaerophyllum hirsutum* L. subsp. *villarsii* (W.D.J. Koch) Arcang.]

1 (APP, MRSN, PORUN, Herb. Gangale & Uzunov, Herb. Rizzieri Masin), 3 (GE, Herb. Cancellieri, Herb. Faraoni, Herb. Tilia), 4 (HLUC), 5 (MRSN, Herb. Gangale & Uzunov), 6 (MRSN), 7 (APP), 8 (TO-HP), 9 (HFLA), 13 (TO-HP), 16 (TO-HP), 17 (HLUC), 18 (PORUN, Herb. Faraoni)

***Imperatoria ostruthium*** L.

[*Peucedanum ostruthium* (L.) W.D.J. Koch]

3 (BI, TO-HP), 5 (MRSN, Herb. Gangale & Uzunov), 15 (TO-HP)

***Laserpitium gallicum*** L. subsp. ***gallicum*** (var. ***angustifolium*** [L.] Lange)

3,1 (APP), 17 (APP 2 es.)

***Pimpinella saxifraga*** L. subsp. ***saxifraga***

3 (Herb. Bovio), 5 (TO-HP), 8 (APP), 10 (MSNM)

Nomenclature is according to Reduron (2008).

***Siler montanum*** L. subsp. ***montanum***

[*Laserpitium siler* L. subsp. *siler*]

17 (APP 2 es.)

***Trinia glauca*** (L.) Dumort. subsp. ***glauca***

3,1 (HFLA), 4,1 (Herb. Gangale & Uzunov 2 es., Herb. Soldano), 5 (Herb. Salerno).