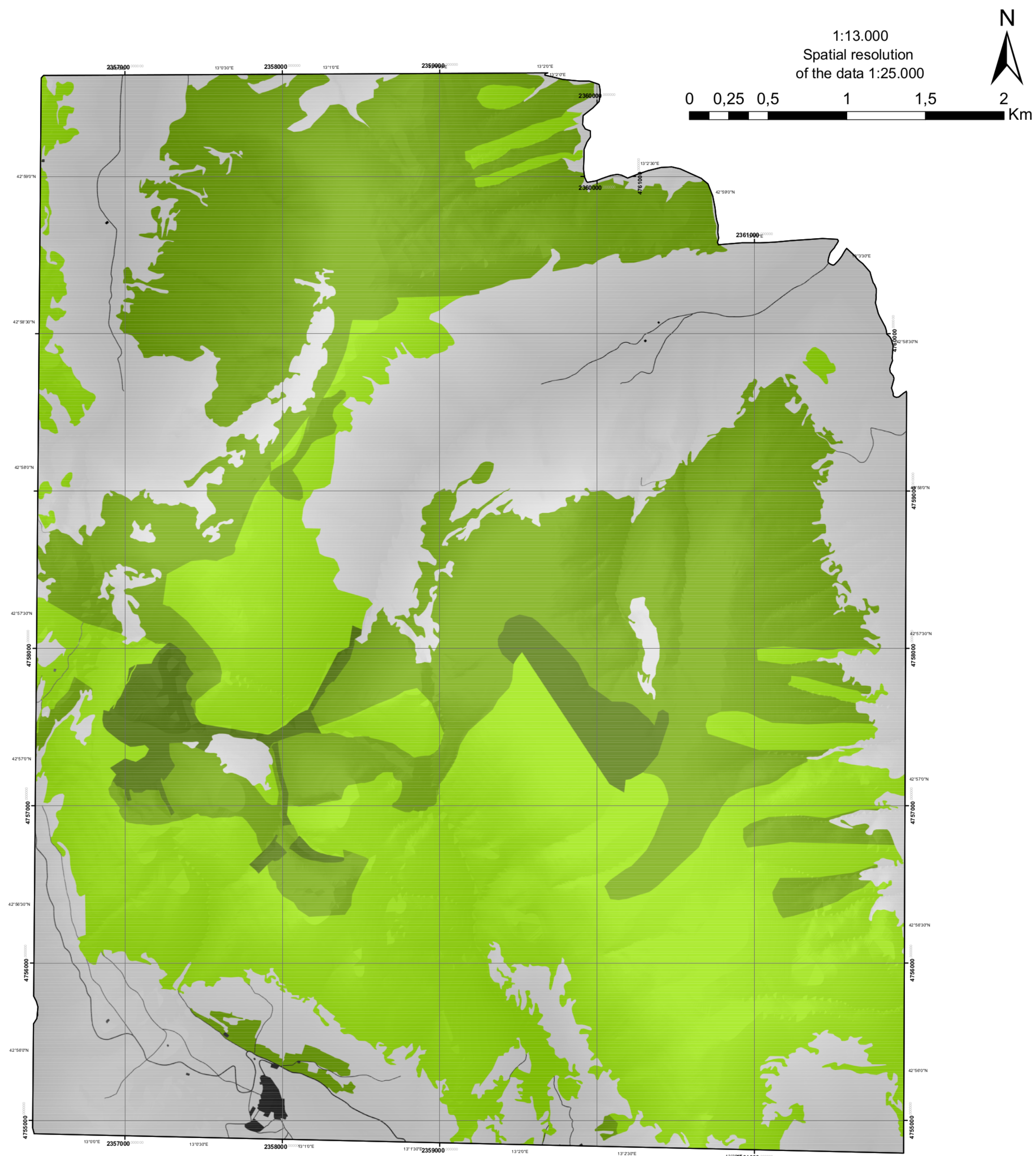


AVERAGE PRODUCTIVITY MAP

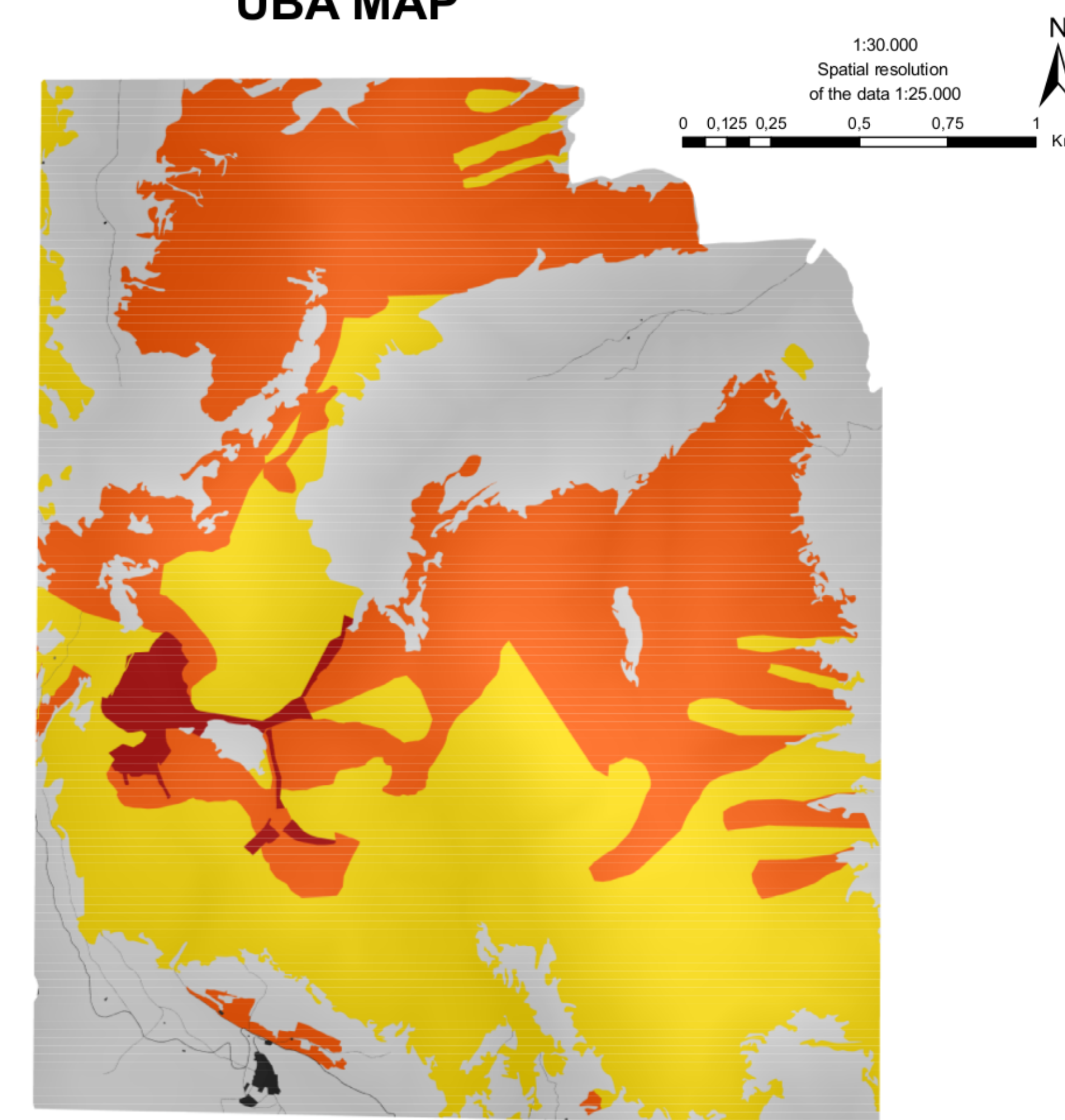


Legend

PROD_1

- CLASS 3 (>300 g/sq) Ass. Colchico lusitani-Cynosuretum cristat; Senecio scopoli-Ranunculetum pollinensis, Filipendulo vulgaris-Trifolietum montani
- CLASS 2 (150-300 g/sq) Ass. Brizo mediae-Brometum erecti
- CLASS 1 (<150 g/sq) Ass. Seslerio nitidae-Brometum erecti; Asperulo purpureae-Brometum erecti, Pontentillo cinerea-Brometum erecti
- OTHER: Deciduous Forests; Shrublands; Agricultural lands

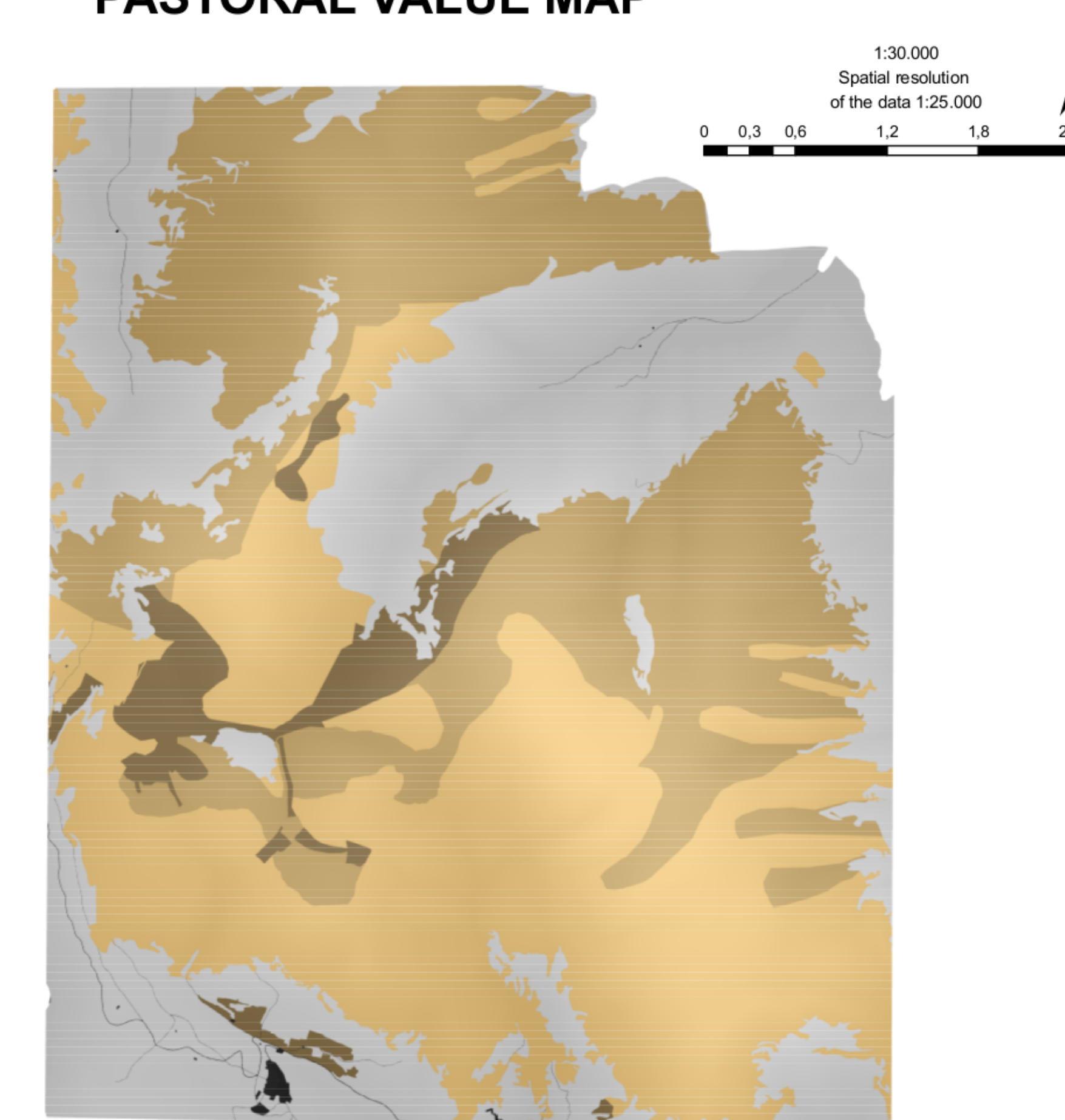
UBA MAP



Legend

- CLASS 3 (12) Ass. Calthaeae laticae-Cynosuretum cristat
- CLASS 2 (12) Ass. Calthaeae laticae-Brometum erecti; Senecio scopoli-Ranunculetum pollinensis; Filipendulo vulgaris-Trifolietum montani; Brizo mediae-Brometum erecti
- CLASS 1 (11) Ass. Asperulo purpureae-Brometum erecti; Pontentillo cinerea-Brometum erecti; Seslerio nitidae-Brometum erecti
- OTHER: Forests; Shrublands; Agricultural lands

PASTORAL VALUE MAP



Legend

- CLASS 3 (10) Ass. Calthaeae laticae-Brometum erecti; Calthaeae laticae-Cynosuretum cristat
- CLASS 2 (09) Ass. Brizo mediae-Brometum erecti
- CLASS 1 (10) Ass. Senecio scopoli-Ranunculetum pollinensis; Filipendulo vulgaris-Trifolietum montani; Asperulo purpureae-Brometum erecti; Pontentillo cinerea-Brometum erecti; Seslerio nitidae-Brometum erecti
- OTHER: Forests; Shrublands; Agricultural lands