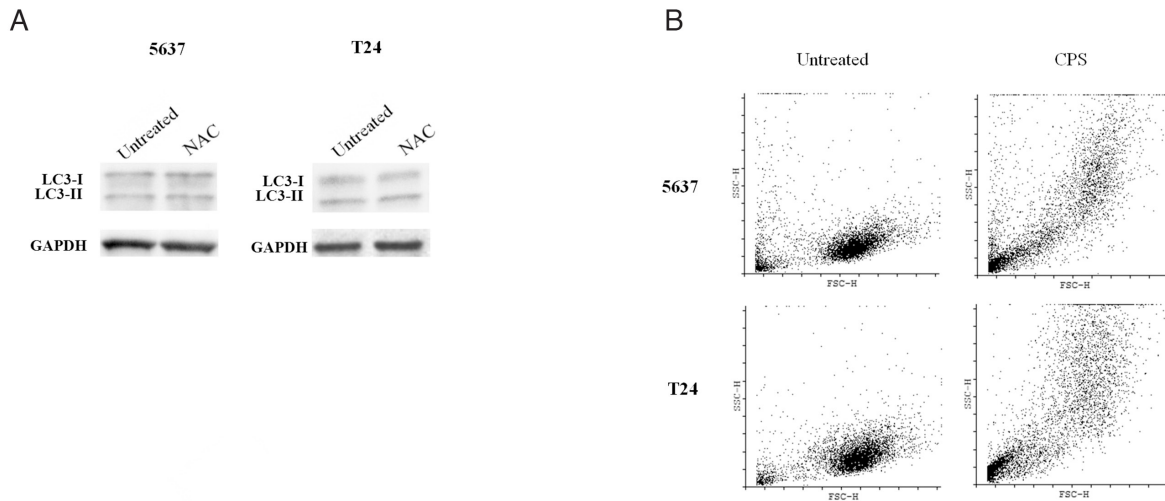


Capsaicin triggers autophagic cell survival which drives epithelial mesenchymal transition and chemoresistance in bladder cancer cells in an Hedgehog-dependent manner

SUPPLEMENTARY FIGURE



Supplementary Figure S1: **A.** Lysates from BC cells untreated or treated for 72h with NAC (10 mM) were separated on 14% SDS-PAGE and probed with anti-LC3 Ab. Cropped blots are representative of one of three separate experiments. GAPDH protein levels were used as loading control. **B.** Cell size was evaluated in BC cells, untreated or treated with CPS (300 μM) for 120 h by FACS analysis using forward scatter parameter. One representative out of three independent experiments is shown.